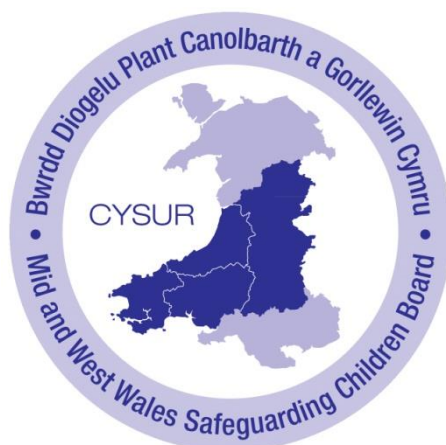


# Annual Report September 2015

## CYSUR Local Operational Group, Carmarthenshire



**CYSUR is an acronym for Child and Youth Safeguarding: Unifying the Region**  
**CYSUR is also the Welsh word for reassurance.**

Title: Annual Report 2015	Status: draft	Date: September 2015
Author: Liz Blazey		Review date: N/A

## **1. Introduction**

This is the first report produced under the Regional Safeguarding Children Board arrangements for Mid and West Wales which were established to meet the requirements of the Social Services and Well-being (Wales) Act 2014.

The report will provide an overview of developments on a regional basis, as well as more detailed information about safeguarding issues at a local level.

## **2. CYSUR**

CYSUR is the Mid and West Wales Regional Safeguarding Children Board. The Mid and West Wales region covers over half of the land mass of Wales, and borders with 9 Welsh counties, as well as counties in England. The region has a population of around 516,700, of which 100,400 are children and young people under the age of 18. Overall across the region 37% of the population speak Welsh, with the highest proportions of Welsh speaking people living in Ceredigion and Carmarthenshire.

In response to the diverse geography and population of the region, CYSUR recognises the need to maintain both a local and regional focus.

- The regional purpose is to co-ordinate the strategic direction, collaboration, consistency and improvement of practice across the region.
- The local purpose is to co-ordinate local practice, and work towards ensuring effectiveness of local arrangements to safeguard and promote the welfare of children and young people.

The structure of CYSUR reflects this, with Local Operational Groups in each local authority area overseeing the detail of local safeguarding and feeding into the CYSUR Executive Board via the CYSUR Strategic and Child Practice Review subgroups.

Junior Safeguarding Children Boards for each local authority area, comprising children and young people, feed into the CYSUR Local Operational Groups. A Junior Regional Safeguarding Children Board, facilitated by Tros Gynnal Plant feeds directly into the CYSUR Executive Board.

A chart setting out the regional and local structure is appended as appendix 1. The membership of the CYSUR Executive Board and the CYSUR Local Operational Group, Carmarthenshire is appended as appendices 2 and 3.

### **3. The regional context**

#### **a. Regional Safeguarding Children Board arrangements**

The Regional Safeguarding Children Board arrangements have been in place for over 12 months, with the first meeting of the CYSUR Executive Board taking place in June 2014. A recruitment process was undertaken during the summer of 2014, with a Regional Manager commencing in post in October 2014. Over the past year significant progress has been made in embedding the new structure and in developing reporting arrangements between the groups at the various levels. However, it appears timely to review CYSUR arrangements ahead of the deadline for implementation of the requirements of the Social Services and Well-being (Wales) Act 2014 to ensure that those requirements are being met in the most effective manner. An independent review is being commissioned which will include consideration of the following issues

- The effectiveness of the structure and the appropriate chairing and membership of each group
- The feasibility of a single joint Adult and Children Executive Board
- Whether the Executive Board should focus more strategically as an authorising environment
- Business support requirements
- Interrelationships between different Boards and partnerships, for example CYSUR, LSBs, CSPs
- The potential impact of local government re-organisation impact on the regional Board

The findings of the independent review will inform the further development of CYSUR.

#### **b. Data Monitoring**

Extensive safeguarding data is considered in detail at the local level, as can be seen from the information presented in section 4 of this report. A small suite of Local Authority safeguarding data items has been agreed for quarterly monitoring on a regional basis by the CYSUR Strategic sub group and Executive Board. This includes the numbers and rates per of per 10,000 population aged under 18 of children on the Child Protection Register, categories of registration, re-registrations within 12 months and percentage of children seen alone at Initial Assessment.

Safeguarding data reports are also presented quarterly by the Hywel Dda University Health Board (HDUHB) and the Powys Teaching Health Board (PTHB). These reports include information on numbers of Child Practice Reviews, Unexpected

Deaths of Children 0-18yrs (PRUDiCs), Child Protection Medicals, Child Sexual Abuse Examinations, Looked After Children, Multi Agency Risk Assessment Conferences (MARACs) and safeguarding children training undertaken.

Monitoring of data relating to missing children and Child Sexual Exploitation is being developed in line with emerging national requirements.

The purpose of monitoring data on a regional basis is to identify and understand any regional variations and trends with the aim of promoting consistently good practice across the region. Monitoring the data over the past 12 months has identified the following

- Powys and Carmarthenshire both saw a rise in registrations over 2014/15, although this appears to have stabilised in the latter part of the year.
- Rates of children on the child protection register per 10,000 population aged under 18 are lower than the national figure for all Local Authority areas within the region.
- Of the 315 children on the child protection register across the region the largest category of registration is Emotional Abuse with 134 children, followed by Neglect with 107 children. Registrations in Powys and Carmarthenshire follow a similar pattern, with Pembrokeshire and Ceredigion both having a higher level of registrations under Neglect than under Emotional Abuse.
- There is considerable variance across the region in child seen alone at initial assessment figures, although performance across the region has in the main been above the All Wales figure, and as a general trend has shown continued improvement since 2011/12
- There was a marked increase in MARAC (Multi Agency Risk Assessment Conference) activity during the last quarter of 2014/15 within the HDUHB area, which was not replicated in Powys where fewer cases were considered in quarter 4 than in previous quarters.
- All Local Authorities within the region are net receivers of Looked After Children from other Local Authorities. Within the Hywel Dda area the number of children placed by other Local Authorities remains relatively stable overall. In contrast the children from other local authority (COLA) population within Powys is very changeable as there are 2 residential assessment units in the county.

Further work is being undertaken by the Board to fully understand the reasons for and implications of these regional variations and trends.

### **c. Multi-Agency Child Practice Reviews**

A core aspect of the work of Regional Safeguarding Children Boards is the identification and dissemination of Child Protection learning via the Child Practice Review Framework. Boards have responsibility for

- establishing child practice reviews and ensuring they are effectively managed
- contributing to the reviews and providing professional challenge
- identifying strategic implications for improving systems and practice in individual agencies or on an interagency basis
- signing off the final report and action plan when a review has been completed;
- publishing the child practice review report
- implementing and auditing changes in local policy, systems and practice to identify what difference they have made

The arrangements that CYSUR has in place to ensure these responsibilities are met are set out below.

The CYSUR Child Practice Review Sub Group receives referrals from the CYSUR Local Operational Groups to consider whether cases meet the criteria for a Child practice review, and makes recommendations to the Chair of CYSUR Executive Board in accordance with Protecting Children in Wales, Guidance for Arrangements for Multi-Agency Child Practice Reviews, Welsh Government, 2013. Where it is decided that a Child Practice Review will be undertaken, Child Practice Review panels are established in the local area to undertake the review. The findings and recommendations of the review are considered by the CYSUR Child Practice Review Sub Group prior to presentation of the report to the CYSUR Executive Board for final agreement. Following acceptance of the report and recommendations the Board notifies Welsh Government and publishes the review on its website. Action plans to implement the recommendations are developed by the local groups, and progress is monitored by the CYSUR Child Practice Review Sub Group.

Since the establishment of CYSUR only one referral has resulted in a decision that a Child Practice Review be undertaken, in this instance a Concise Child Practice Review. This review is now nearing completion and it is anticipated that the report will be presented to CYSUR Executive Board in October.

In this period three Child Practice Reviews have been published which were started under the previous Local Safeguarding Children Board arrangements. Monitoring of these action plans and the dissemination of learning from Child Practice Reviews and Multi Agency Professional Fora conducted during this transitional period is being overseen via the CYSUR Child Practice Review Sub Group.

## **d. Communication and Stakeholder Engagement**

### **i. Brand promotion**

It is important that there is a clear branding and identity for the Regional Safeguarding Children Board and that CYSUR is recognised across the region. The CYSUR logo and branding has been agreed and some promotional materials have been developed, however the launch and active promotion of the brand is still to be progressed. A key aspect of this is the development of the CYSUR website. Preliminary proposals regarding the website content were developed by a multi agency group prior to the establishment of CYSUR, however it was initially not possible to further progress the development of the website due to capacity constraints within Local Authority web teams. This has since been resolved, the domain names of cysur.wales and cysur.cymru have been secured and the CYSUR website has been built in draft form. Further work will be undertaken by a small multi agency work group to refine the content prior to translation, followed by the launch of the fully bilingual CYSUR website.

### **ii. Junior Regional Safeguarding Children Board**

The Social Services and Well-being (Wales) Act 2014 requires that the Board has in place arrangements for children and young people to participate in its work. Tros Gynnal Plant have been commissioned to facilitate the development of a Junior Regional Safeguarding Children Board to ensure that this requirement is met, and that the views of children and young people are integral to the work of the Board.

Representatives from the Junior Regional Safeguarding Children Board have attended several meetings of the CYSUR Executive Board both in person and via teleconference to talk about the work they have been doing both as Junior Safeguarding Boards within their local areas and also regionally.

Members of the Junior Board came together for a full day meeting in Aberaeron in April and worked on developing a terms of reference, name and logo for the Junior Regional Safeguarding Children Board, discussed how they would like to feed into CYSUR and identified priorities for their future work plan. They also took part in workshops on developing a timeline of achievements to date, suggestions for different types of Social Media presence and information for safeguarding information for young people.

Since the meeting in April the regional groups have had a meeting via Skype to discuss regional updates and also to plan the Residential Annual General Meeting which has now been set for the 26<sup>th</sup> September. Members of the CYSUR Executive Board have been invited to attend the AGM for a question and answer session.

The name of the regional junior group has been voted upon and confirmed as CADW – Children taking Action Differently in Wales. The logo has also been agreed, and a

website has been designed and created for CADW by a member of Eat Carrots (the Junior Safeguarding Board in Powys). Links will be put in place between the CADW website and the CYSUR website.

### **iii. Elected member engagement**

In order to mitigate against the potential risk of disconnection with local political processes as the regionalisation of Safeguarding Boards progressed, CYSUR developed a process for engagement with Elected Members via the Lead Members within each Local Authority.

As part of the engagement process a briefing paper is produced following each meeting of the CYSUR Executive Board. This paper is also used to communicate key messages about the work of CYSUR to a wider stakeholder audience.

#### **Elected Member engagement process**

The nominated Lead Member for each Local Authority will be sent the agenda at the same time as the circulation of paperwork to the Executive Board.

The nominated Lead Member for each Local Authority will be responsible for engaging with relevant elected members from their Local Authority and for representing the elected members' views and any issues raised to the Statutory Director for Social Services of their Local Authority.

The Statutory Director for the Local Authority will represent views and issues raised at the Executive Board.

Nominated Lead Members will be briefed by the Chair after the Executive Board, either by meeting or other briefing methods.

The briefing from the Chair will:

- Cover all relevant agenda items.
- Be an opportunity for the relevant Lead Member to ask questions on behalf of Elected Members.

The Lead Member for Children and Young People will be responsible for feeding back all information from the briefing to relevant elected members from their Local Authority.

**Any operational issues or safeguarding concerns should continue to be raised following the established processes in the relevant Local Authority.**

#### **e. Development of multi agency information sharing arrangements**

A multi agency Steering Group to explore the implementation of a regional Multi Agency Safeguarding Hub (MASH) has been in existence for some time. At the December meeting of CYSUR Executive Board it was decided that the governance for this group should fall under CYSUR, with a proposal relating to the development of a regional MASH being considered by the CYSUR Executive Board in March 2015.

The proposal sought agreement from the Board on taking an incremental approach to the establishment of the regional MASH, starting with the establishment of a Carmarthen based multi agency information sharing hub with the option of subsequently moving to a decision making model. The proposal also sought agreement from the Board for the funding of a project manager post from the CYSUR budget to undertake the extensive work required prior to the establishment of the information sharing hub.

The Board was unable to reach a consensus on the principle of the initial implementation of an information sharing hub and requested further information on the various MASH models to inform decision making on the way forward. In particular the Board questioned whether there were examples of decision making MASHs which spanned more than one Local Authority.

A review of national MASH evaluation reports was presented to the July meeting of the Executive Board which identified a number of key issues around governance, accountability and financial commitment which would impact upon the proposed regional MASH implementation. Further discussion around these issues will be taking place at the October meeting of the Executive Board.

#### **f. Child Sexual Exploitation**

It was agreed by the CYSUR Executive Board to ensure a region wide consistent response to Child Sexual Exploitation by developing a regional multi agency CSE strategy and action plan based on the College of Policing National Sexual Exploitation Action Plan, and the Operation Celtic review being undertaken by Dyfed Powys Police. The CYSUR Child Sexual Exploitation Prevention Strategy has been developed via a multiagency task and finish group, which has reviewed the Dyfed Powys Police CSE Action Plan and the interim report from the Operation Celtic review. National protocols and guidance, relevant research and examples of good practice have also been considered by members of the group.

The final draft of the CYSUR CSE prevention strategy was agreed by the Executive Board in July 2015.



The CYSUR CSE Strategy identifies the following key priority areas and outcomes for joint working.

#### Awareness raising

- Raising awareness of CSE amongst front line staff in all agencies
- Raising awareness of CSE with children and young people and their parents and carers
- Taking a targeted approach to raising awareness of CSE with specific groups within the wider community in response to emerging themes and trends.

#### Identification, risk assessment and case management

- Ensuring effective processes are in place for identifying children at risk of CSE
- Ensuring a consistent response to missing children
- Ensuring consistency of compliance with the All Wales CSE Protocol particularly in relation to the SERAF assessment and review process
- Ensuring effective processes are in place to support the identification and disruption of perpetrators.

#### Looked after children placed by other authorities

- Seeking to ensure that relevant agencies are aware of children placed within the region by other authorities and that risk assessments are shared
- Development of a memorandum of understanding with Local Authorities and private providers in relation to the Dyfed Powys on line risk assessment tool for residential care homes
- Exploring the potential to extend the on line risk assessment tool to incorporate foster placements

#### Support and recovery services

- Ensuring that children affected by, or at risk of being affected by CSE are offered an appropriate level of preventative, support and recovery services, and that clear pathways for accessing services are in place for all levels of risk.

Whilst the regional strategy was under development it was announced that the Welsh Government is leading on the development of a CSE Action Plan for Wales, including a data set to provide accurate and consistent reporting of CSE. The CYSUR CSE strategy and action plan will take cognisance of any requirements arising from the Action Plan for Wales.

Progress against the CYSUR CSE Strategy action plan will be monitored by CYSUR Executive Board.

#### **g. Sexual Assault Referral Centre (SARC)**

The CYSUR Executive Board is concerned about the negative impact that the regionalisation of SARC services has had for the small number of children and young people in our region who require forensic medical examinations following sexual assault, with children having to travel long distances and being subjected to unacceptable delays.

The national Sexual Assault Services Project Board has undertaken an options appraisal exercise for the future delivery of sexual assault services. This has concluded that the severe shortage of the specialist staff required undertaking forensic medical examinations of children means that it is not possible to meet the required safety and quality standards in any more than two sites. It is clear that the location of these sites will be key in ensuring that children in Mid and West Wales are able to access services in a timely manner.

#### **h. Training and Practice Development**

The CYSUR Executive Board has identified the need for a Regional Multi-agency Workforce Development Plan for Safeguarding. A CYSUR regional training group is meeting on a task and finish basis to progress this. The group has established the current position for each agency/organisation in terms of pressures and unmet needs, scoped the current priorities for regional training across agencies/organisations and developed an action plan to take this work forward. The action plan has been approved by CYSUR Executive Board, and the following priorities for regional multi-agency safeguarding training have been confirmed:

- Section 47/Joint Investigation Training
- Developing capacity to undertake Child Practice Reviews and multi-agency Professional Fora, and disseminating the learning emerging from these processes.
- Safeguarding specific training arising from emerging legislation and national guidance as prioritised by CYSUR Executive Board on an annual basis

- Collaboration on commissioning specialist training too expensive for one agency to procure on their own, based on identification of need at the local operational group level
- Training arising from the implementation of regional strategies, policies protocols and procedures
- Investment in the continued professional development of the regional safeguarding training workforce (train the trainer), maximising opportunities to link with Families First and including co-production with the third sector.

A training needs analysis will be undertaken during September and October 2015, with the aim of producing a costed workforce development plan for the delivery of training on a multi-agency basis from April 2016.

#### **i. Priorities for Work going forward**

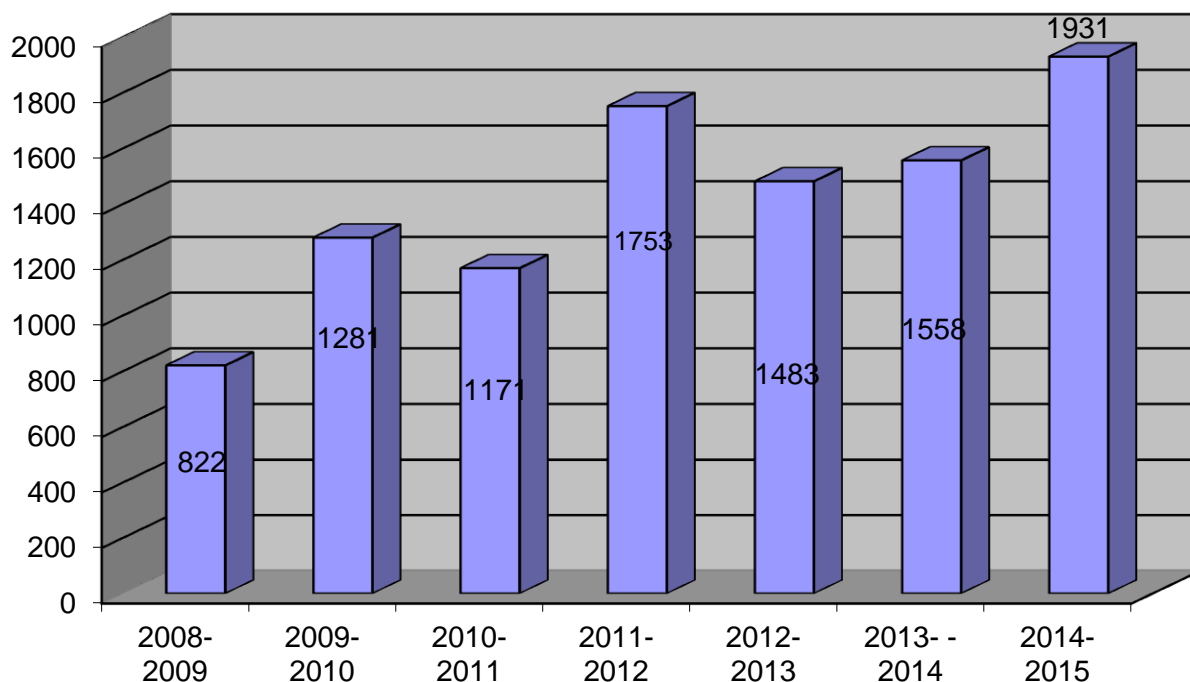
- Completion of an independent review of CYSUR arrangements
- Active promotion of the CYSUR brand including the finalisation and launch of the CYSUR website
- Further exploration of options for MASH implementation
- Implementation of the CYSUR CSE prevention strategy
- Development and delivery of a regional multi agency workforce development plan for safeguarding

#### **4. The local context**

This section of the Annual Report summarises key areas of multi agency working to safeguard children. The collection and analysis of this data enables the LSCB to identify where arrangements are effective and areas which require further exploration, consideration and activity. The statistics are prepared from the Care First database, part of the Children's Services Department of Carmarthenshire County Council. An increasing amount of key data is now being received from other LSCB member agencies.

The set of statistics retrieved from the Child Protection Register is collated monthly and quarterly. Quantitative and qualitative performance information is analysed by the Independent Reviewing Team.

## Child Protection Initial Contacts to Children's Services April 1<sup>st</sup> 2008 to March 31<sup>st</sup> 2015



### Analysis/Comment

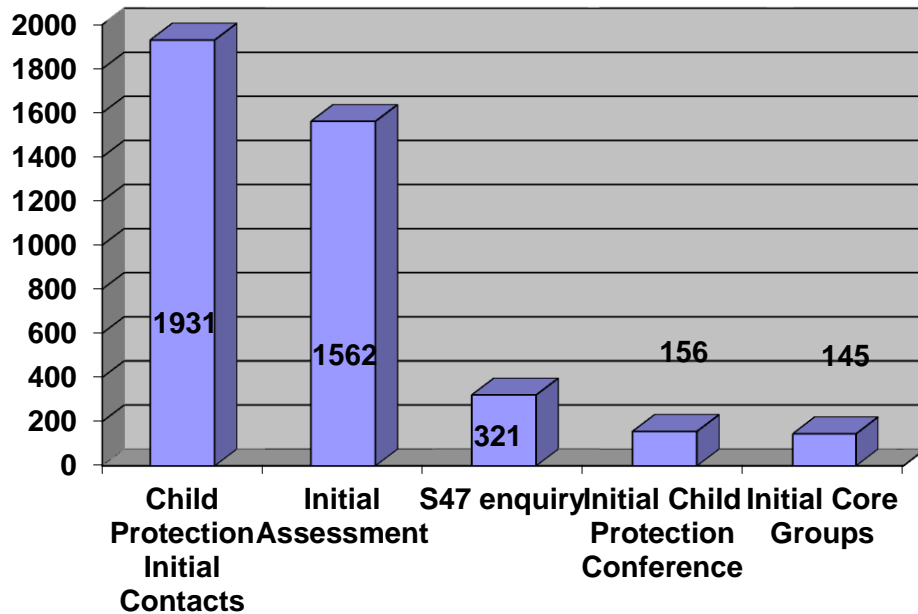
Since 2008/2009 there has been overall growth in the amount of Child Protection Initial Contacts. In 2011/12 there was a significant peak in referrals and again in 2014/2015. It is difficult to be sure whether this represents an increase in child abuse in the county. It is likely that a number of factors have contributed to the increase in the child protection activity. These factors include:

- An improvement in the identification and reporting of children at risk.
- Greater levels of professional awareness of risk to children following the publication of Lord Laming's enquiry into the death of Victoria Climbié and media coverage of Peter Connelly and more recently Jimmy Saville and Operation Yewtree.
- Improvements in inter-agency relationships and awareness raising from all statutory agencies and the LSCB. Changing referral practice from professional groups.
- The categorisation of children in need/child protection.

Also during 2014-2015 Carmarthenshire Children Services changed the way that referrals were received into the department and introduced a single point of access; the Central Referral Team in order to address the issue of different threshold's being applied throughout the Local Authority. We are currently undertaking work with the team on setting the threshold and ensuring that children and families receive the

appropriate service to their need whether that be from preventative services or statutory services.

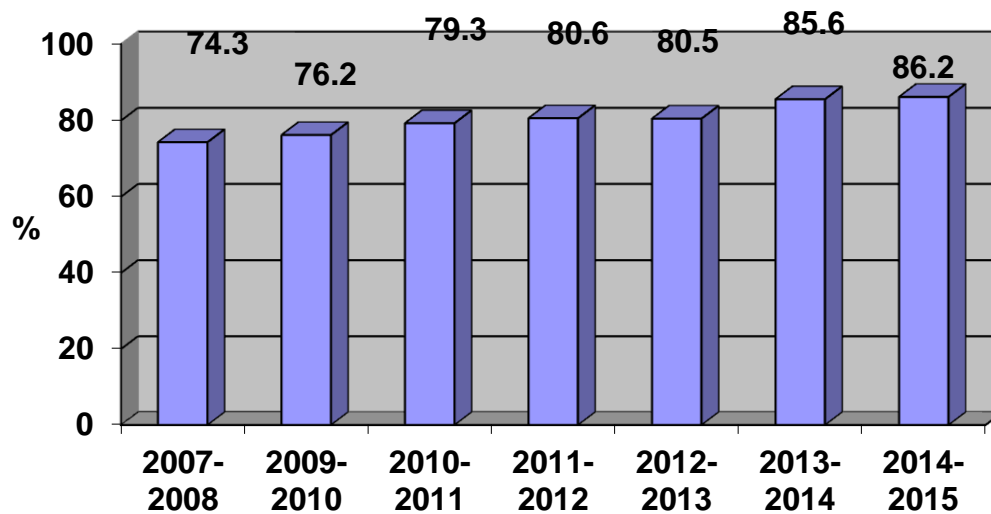
**b). Breakdown of Child Protection Activity in 2014-2015.**



**Analysis/Comment**

In 2014/2015 there were 1931 child protection initial contacts to Children’s Services. From these 1931 child protections initial contacts 1562 (81%) Initial Assessments were completed in 2014/2015. It was decided that in 369 cases that either an Initial Assessment wasn’t needed or that preventative services should be provided. This would seem to indicate that the level of referrals categorised as Child Protection is warranted. 321 section 47 enquiries were made in 2014/2015. 156 (48%) of these enquiries concluded that the child required a child protection plan to safeguard the child’s welfare and an Initial Child Protection Conference was convened.

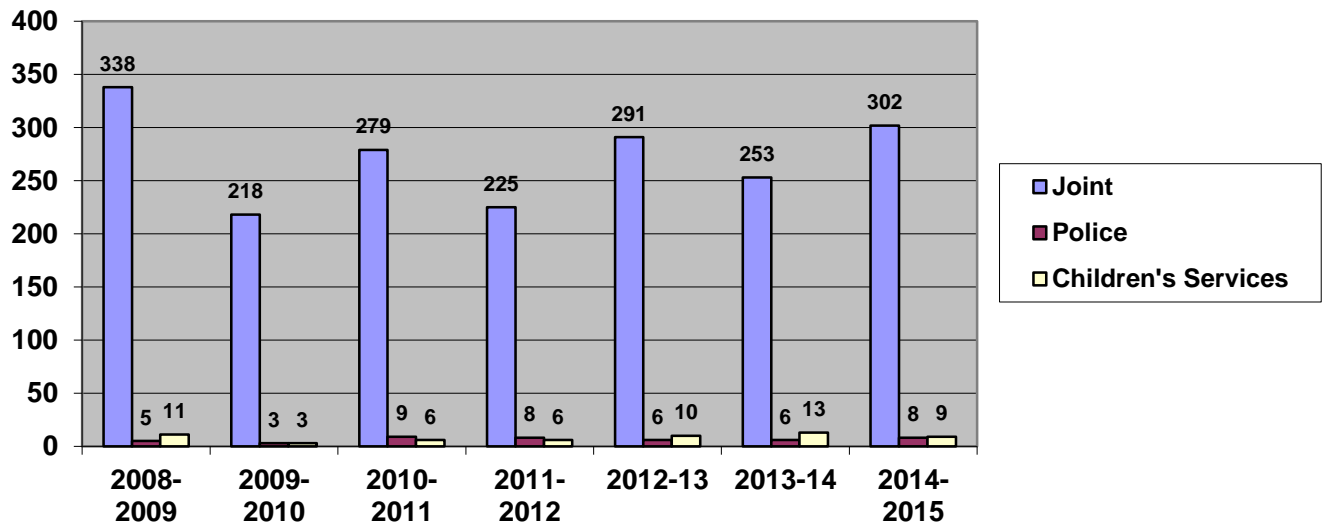
### c). Initial Assessments within 7 days



#### Analysis/Comment

It is vital that the Initial Assessment of the child's needs is carried out in a timely manner to ensure that any action needed to safeguard and promote the welfare of the child is taken as quickly as possible. There has been a steady increase over the period of 2008 -2013 and a significant increase between 2012/14 in the assessments being carried out within the timescales required by the Welsh Government. This year the number of assessment carried out within the timescales increased again. Whilst it is deemed best practice to complete the initial assessment within 7 days it is sometimes necessary to wait for vital information that is not available within the 7 days. A balance needs to be kept between ensuring Initial Assessments are completed within timescales and are completed to a high standard. In order to ensure that the child is central to the assessment in 83.1% of the assessment's the child was seen and in 47.3% the child was seen alone. This is a significant increase from 18.5% in 2009/2010 and something which we are continuing to work on. There are a number of reasons why a social worker may not see a child on his/her own, for example, the child's age.

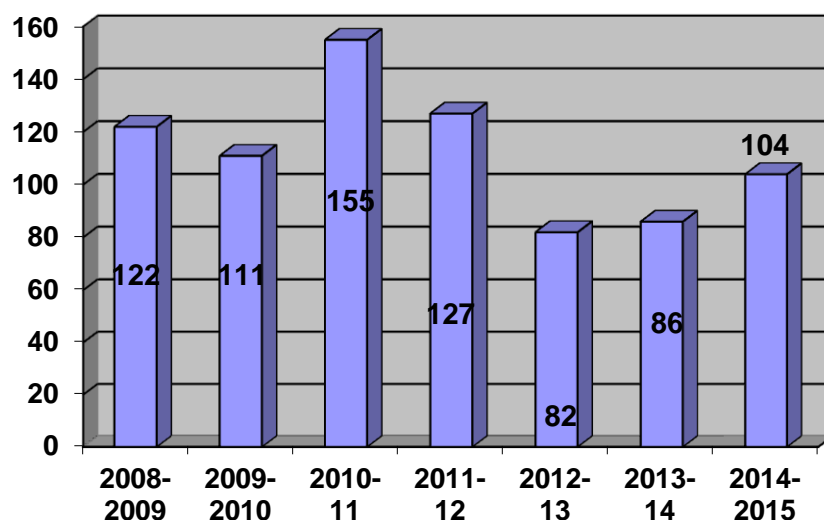
**d). Joint Section 47 enquiries, Police only enquiries and Social Care only**



**Analysis/Comment**

When a decision is reached to carry out a section 47 enquiry a strategy discussion is held between children’s services and the police to plan how the enquiry will be carried out. In the majority of cases a joint investigation between police and children’s services is undertaken. Between 2008 and 2014 there had been a drop in the overall number of Section 47 enquiries undertaken within Carmarthenshire, however in the year 2014/2015 there is a slight increase, this is due to the significant increase in the number of referrals that children services have received and therefore the increase in the number of families that we are working with. Operating higher thresholds for joint police and social care child protection investigations will be a focus of the departments work in the coming year. Regular audit of the referrals received and the decision-making taking place within the assessment teams has and will continue to ensure that the service is operating safely as well as efficiently. Both the Police and Children’s Services are satisfied that this approach has led to more effective interventions and efficient use of the two agencies resources.

**e). Number on Child Protection Register March 31<sup>st</sup> 2008 – March 31<sup>st</sup> 2015**



**Analysis/Comment**

The number of children on the child protection register fluctuates according to need. There has been a large drop in numbers of children on the child protection register from 155 on the 31<sup>st</sup> March 2011 to 86 on the 31<sup>st</sup> March 2013. However 2014-2015 saw a rise of 20% from the previous year.

When a child's name is registered to the Child Protection Register then a Social Worker should be allocated to that child. Over the last 12 years, every child whose name has been registered on the child protection register has been allocated a Social Worker.

**f). Breakdown of register by category of abuse March 31<sup>st</sup> 2015.**

Register Category of Abuse	No. on register at 31 March 2014	No. on register at 31 March 2015
Neglect Physical abuse and sexual abuse	0	0
Neglect and physical abuse	0	0
Neglect and Sexual Abuse	0	0
Physical and Sexual Abuse	0	0
Neglect (only)	29	28
Physical Abuse (only)	5	2
Sexual Abuse (only)	5	6
Emotional Abuse (only)	47	68
<b>Total Number of Children</b>	<b>86</b>	<b>104</b>

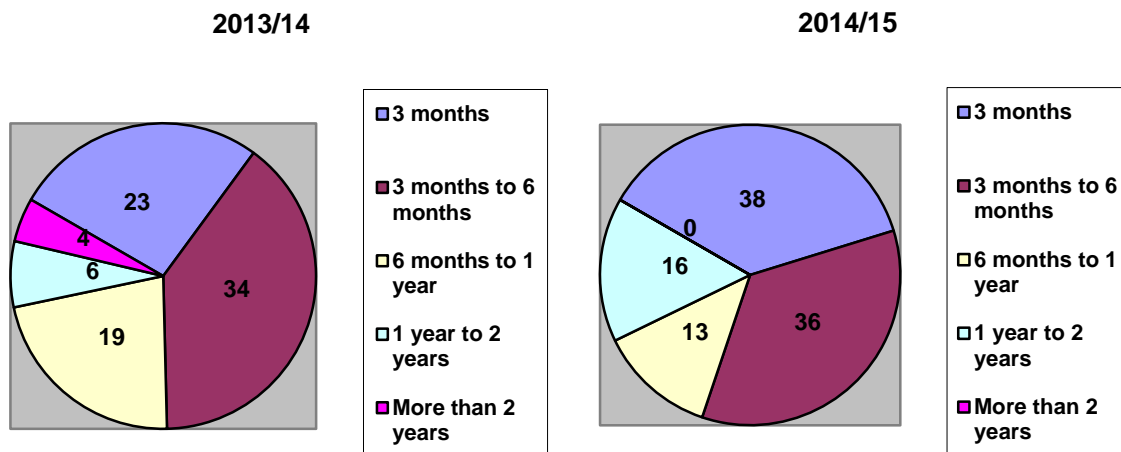
**Analysis/Comment**

These figures reflect a snapshot on a single day and illustrate the prevalent categories of registration. When a child is registered on the child protection register a decision is reached as to which category they should be registered under. The predominant categories of registration are Neglect (only) and Emotional Abuse



(only). This reflects the high level of children who are experiencing domestic abuse who come to Initial Child Protection Conference.

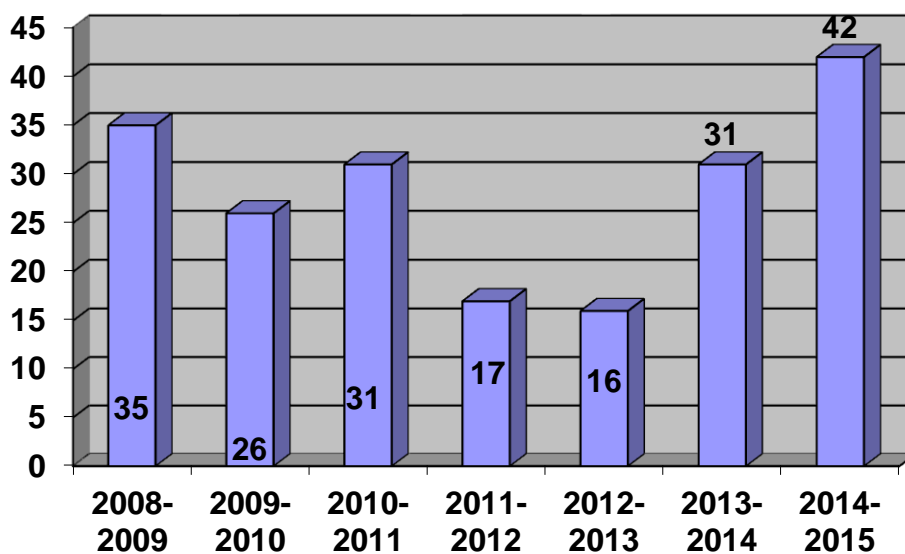
**g). Number of Children on the Child Protection Register by length of time**



**Analysis/Comment**

It is best practice to keep the child's name on the Child Protection Register for the shortest amount of time necessary to reduce the risk of harm to the child. The majority of children (87) remained on the Child Protection Register for 3 months to a year. A minority of children (16) remained on the register for between 1 and 2 years and no child was subject to a child protection plan for more than 2 years.

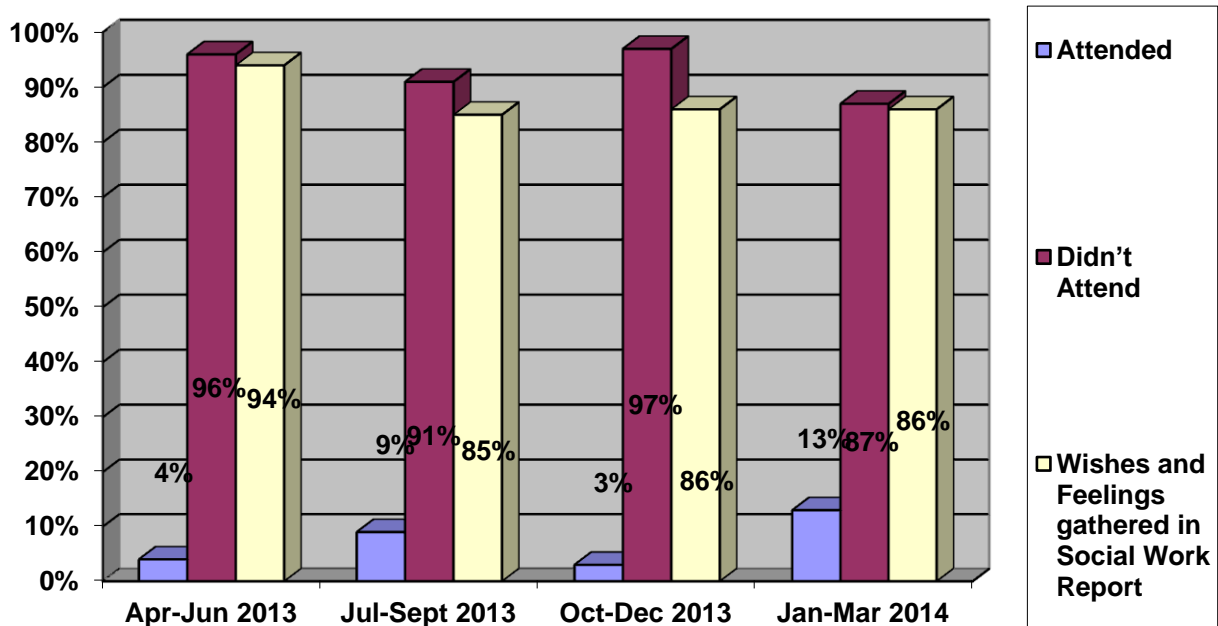
**h). Children who have previously been on the Register and were re-registered 2014/15**



## Analysis/Comment

In an ideal situation Child Protection Plans will permanently reduce the risk to a child. However there are a number of reasons why children may be re-registered. For example this can be the case when there are issues of compromised parenting due to parental substance misuse or parental mental health. It is sometimes necessary to re-register children where the parent has a relapse and this puts the child at risk of harm again.

### i). Attendance/Participation of the child at Child Protection Conference 2014/15.



## Analysis/Comment

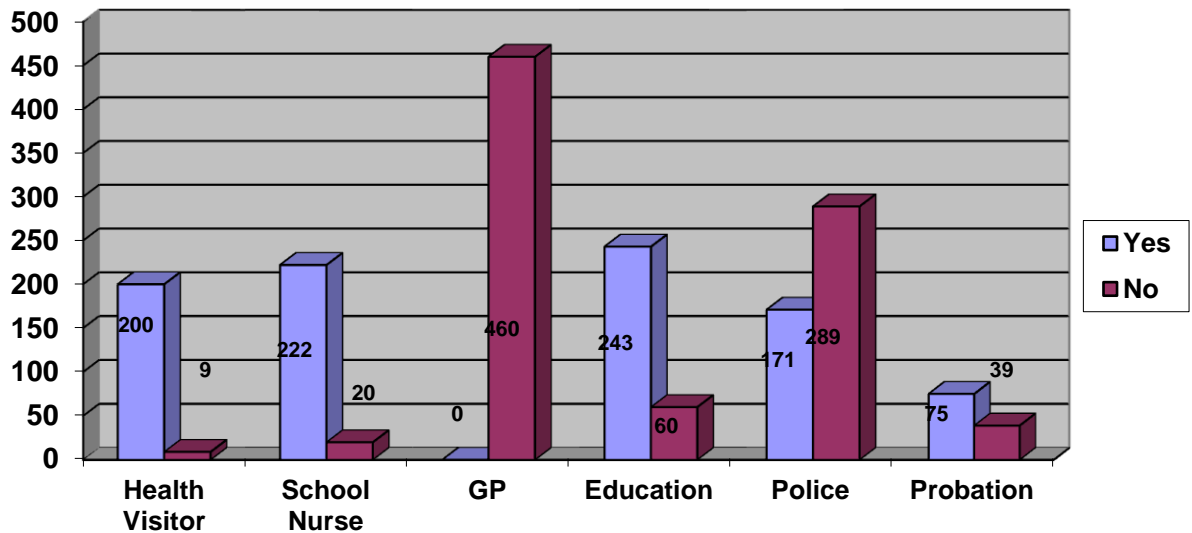
The low attendance at Child Protection Conference reinforces that children's involvement in the decision making process is an area that needs improvement; although the above figures are an improvement from last year. Action will be taken to address this issue by CYSUR (Mid and West Wales Safeguarding Children Board) 2014/15

It is not always appropriate for children and young people to attend Child Protection Conference. Where attendance is appropriate then the child or young person should be encouraged to attend and this should be facilitated.

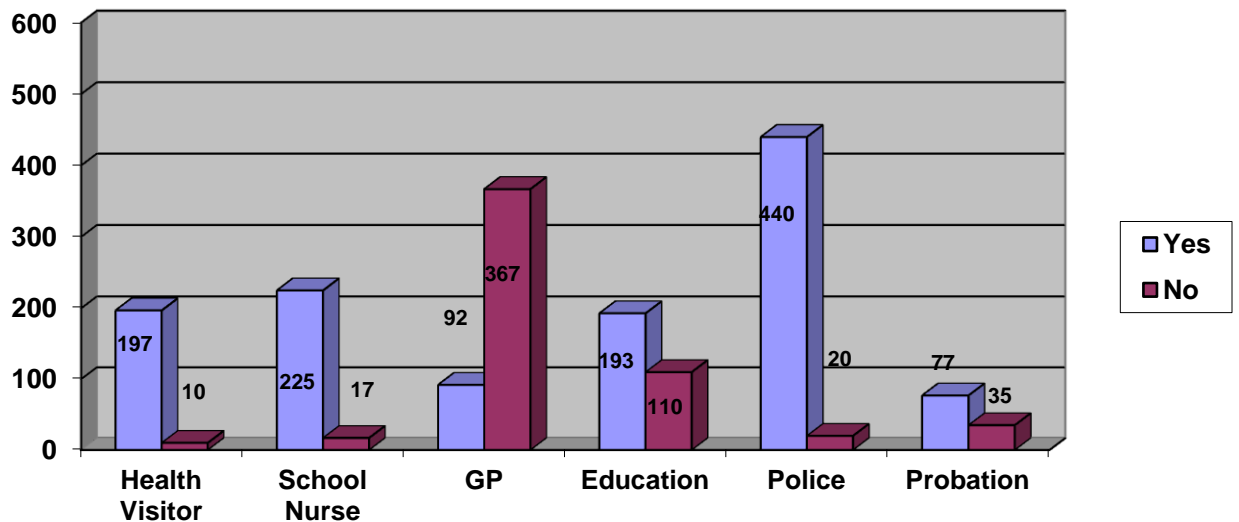
Where attendance is not appropriate then there should be clear evidence that the child has been able to participate in the decisions that are being made about them. Finding creative ways to better engage children in this process is a priority for the Reviewing Service.

Research has been undertaken regarding effective tools for ensuring the engagement and participation of children and young people in the child protection process. Tools have been highlighted and will be piloted in 2015/2016.

**j). Professional Attendance at Child Protection Conference when invited 2014/15.**



**k). Reports written by Professionals for Child Protection Conference 2013/14**



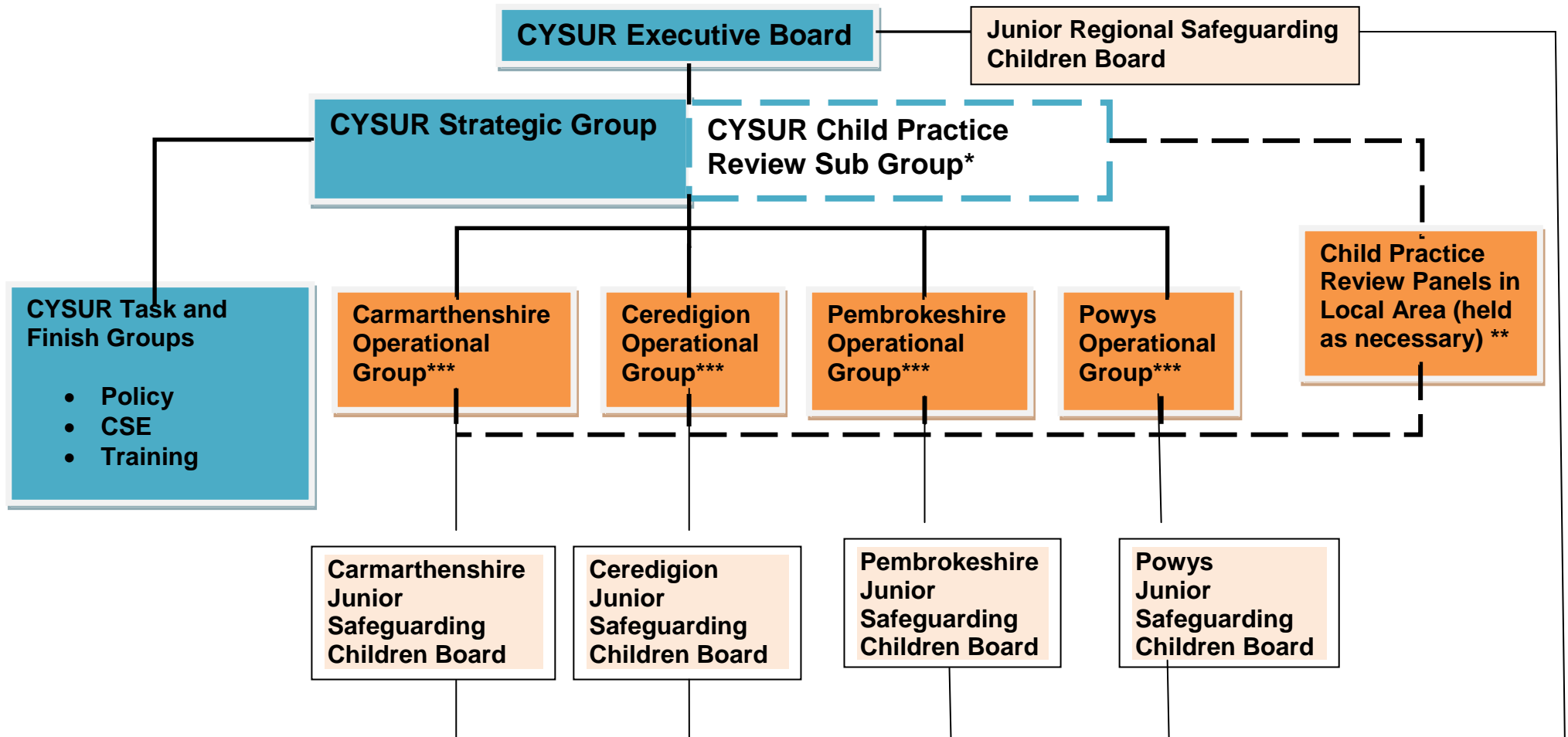
**Analysis/Comment**

The graphs above highlight the attendance and reporting of key professional groups at child protection conferences. It has been recognised by CYSUR, Local

Operational Group, Carmarthenshire that GP attendance and reporting at Child Protection Conference is an area for improvement. Attendance by schools, school nurses, health visitors and the police is consistently good. Where schools do not attend this is often because there are issues providing cover for classes and the limited staffing resources within small schools.

Previously the LSCB agreed that the focus for improvements should be ensuring that a GP report is received for each conference; this year 92 reports were received; which is a similar figure to last year. The health board are continuing to work to address this issue.

The police attend and report to all initial child protection conferences but only attend and report to review child protection conferences where this is necessary. This accounts for the lower than expected attendance and reporting to child protection conference by the police.



\*Accountability for the functioning of CYSUR Child Practice Review Sub Group will be through the Chair of CYSUR Child Practice Review Sub Group both in attendance at CYSUR Executive Board and with regular meetings with the Chair of CYSUR.

\*\*Accountability for Child Practice Review in the Local Area remains with the relevant Head of Children’s Services with professional challenge through their membership of CYSUR Child Practice Review Sub Group

\*\*\*Local arrangements sit under these with flexibility to meet locally defined need

## Appendix 2

Membership of CYSUR Executive Board as at September 2015		
Jake Morgan (Chair)	Statutory Director Social Services	Carmarthenshire County Council
Caroline Oakley (Vice Chair)	Director of Nursing	Hywel Dda Health Board
Rhiannon Jones	Director of Nursing	Powys Teaching Health Board
Karen Toohey	Designated Professional Safeguarding Children	Safeguarding Children Service, Public Health Wales
Stefan Smith	Head of Children's Services	Carmarthenshire County Council
Pam Marsden	Statutory Director Social Services	Pembrokeshire County Council
Allison Parkinson	Head of Children's Services	Pembrokeshire County Council
Amanda Lewis	Statutory Director Social Services	Powys County Council
Pauline Higham	Head of Children's Services	Powys County Council
Parry Davies	Statutory Director Social Services	Ceredigion County Council
Elfed Hopkins	Head of Children's Services	Ceredigion County Council
Kate Evan Hughes	Director of Children and Schools	Pembrokeshire County Council, Lead representative of Directors of Education (ERW)
Andy John	Detective Superintendent	Dyfed Powys Police
Christine Harley	Assistant Chief Executive	National Probation Service
Ella Rabaiotti	Assistant Chief Executive	Community Rehabilitation Company
Steve Davis	Service Manager for Pembrokeshire Youth	Lead representative from all 4 Youth Offending Teams
Marie Mitchell	Director of CAVS	Lead Representative from Voluntary Sector

### Appendix 3

<b>Membership of CYSUR Local Operational Group, Carmarthenshire as at September 2015</b>		
Stefan Smith (Chair)	Head of Children's Services	Carmarthenshire County Council
Angela Lodwick	Head – Specialist Child and Adolescent Mental Health Service	Hywel Dda Health Board
Bethan Tinney	Senior Practitioner, Safeguarding for Education	Carmarthenshire County Council
Dr V. Vipulendran	Named Doctor	Pembrokeshire County Council
Frances Lewis	Service Manager, Children Services	Carmarthenshire County Council
Hannah Williams	Deputy Assistant Chief Executive	National Probation Service
Julie Breckon	Reviewing Manager	Carmarthenshire County Council
Natalie Hardess	Domestic Abuse Co-ordinator	Domestic Abuse Forum
Neil Edwards	Service Manager, Adult Services	Carmarthenshire County Council
Noreen Jackman	Service Manager, Children Services	Carmarthenshire County Council
Paul Jones	Detective Inspector	Dyfed Powys Police
Rebecca Copp	Child Protection Co-ordinator	Carmarthenshire County Council
Rhian Lovell	Deputy Assistant Chief Executive	Community Rehabilitation Company
Ruth Harrison	Interim Safeguarding Children Lead – Acute Services	Hywel Dda Health Board

## Appendix 4. Glossary of Terms

Adult Safeguarding Board (ASB)	The Adult Safeguarding Board oversees the adult safeguarding work in the county, promoting prevention, effective investigation and appropriate aftercare for victims of abuse. The Adult Safeguarding Board monitors and audits adult safeguarding work.
CAFCASS	Children and Family Court Advisory and Support Service CAFCASS CYMRU provides expert independent advice to Courts on the interests of children involved in family proceedings. All cases are referred to us by a court or high court.
CAMHS	Child and Adolescent Mental Health Services are part of the National Health Service (NHS). CAMHS provide mental Health Services to children and adolescents.
Care First Database	The Care First Database is used by Children's Services to record information about their involvement with children.
Child Death Review Team	The Child Death Review Team undertakes Child Death Reviews. Child death reviews are needed to understand why children die and to use the findings to take action that can protect other children and prevent future deaths.
Child Protection Referrals	A referral to a Children's Services Assessment Team where it is deemed that a child is suffering or is at risk of suffering significant harm.
Child Protection Register	The Child Protection Register is a register of children within a local authority area who are at risk of significant harm.  The purpose of placing a child's name on the register is to alert all professionals working with a child to the risk of significant harm. It confirms that an interagency plan for the protection of the child is in place and must be complied with, and that a key worker is working with the child and family.
Children and Young People's Partnership	The Children and Young People's Partnership was established at the end of 2006 in response to the statutory requirement contained in the Children Act 2004. Its key responsibility is to improve the outcomes for children and young people (aged 0-25) across Carmarthenshire and implement the single Children and Young People's Plan 2008 – 2011.
Community Safety Partnership	The Community Safety Partnership was formed to deliver safety and security in Carmarthenshire. The partnership's key priorities are to address: <ul style="list-style-type: none"> <li>• Anti-social behaviour and fear of crime</li> <li>• Substance misuse</li> <li>• Domestic abuse</li> <li>• Burglary</li> </ul>



	<ul style="list-style-type: none"> <li>• Violent / Alcohol related crime</li> <li>• Vehicle crime</li> <li>• Road safety</li> </ul>
CSSIW	Care and Social Services Inspectorate Wales. Their role is to make professional assessments and judgments about social care, early years and social services and so encourage improvement by the service providers. They inspect and review local authority social services, and regulate and inspect care settings and agencies.
Domestic Abuse	<p>Any incident or pattern of incidents of controlling, coercive or threatening behaviour, violence or abuse between those aged 16 or over who are or have been intimate partners or family members regardless of gender or sexuality.”</p> <p>This can encompass, but is not limited to, the following types of abuse: Psychological, physical, sexual, financial and emotional</p>
ETE	Education Training and Employment.
Health, Social Care and Well Being Partnership	<p>The Health, Social Care &amp; Well Being Partnership Strategy was formed to focus on improving people's health and well being. Key priorities include:</p> <p>Improve health</p> <p>Promote and enforce good standards of health</p> <p>Support children in need</p> <p>Improve the quality and availability of housing</p> <p>Improve the availability and quality of services for adults and their carers</p>
HMI Probation	Her Majesty's Inspectorate Probation.
Initial Assessment	The Initial Assessment will establish whether a child is in need and additionally whether the child is in need of protection.
Initial Child Protection Conference	<p>The Initial Child Protection Conference brings together family members, the child where appropriate, and those professionals most involved with the child and the family, following child protection s47 enquiries.</p> <p>Its purpose is to:</p> <p>Objectively analyse, in an interagency setting, all the concerns and the information which has been obtained from the initial assessment, the child protection section 47 enquiries, the core assessment to date and from previous knowledge of the family;</p> <p>Make judgements about the likelihood of a child or any other connected or unborn children suffering significant harm in the future, that is, the level of continuing risk;</p>

	Decide what future action is required to safeguard the child and to promote their welfare, agree how to take this forward and clarify the intended outcomes for the child, that is, the need for registration and a child protection plan.
Initial Core Group	The core group is responsible for developing and implementing the child protection plan as a detailed working tool within the outline plan agreed at the initial child protection conference.
Looked After Children (LAC)	A child or young person is 'looked after' if they are cared for by the local authority either under Section 20 or Section 31 of the Children Act 1989.
PPU	Public Protection Unit within police forces
MAPPA	Multi Agency Public Protection Arrangements
Multi Agency Practice Forum	Multi-agency professional forums are a continuous LSCB programme of multi-professional facilitated "learning together" events for practitioners and managers. They can be used for case learning events using a systems approach and for disseminating and exploring learning from audits, inspections and reviews.
Section 28 duty	Statutory duty within the Children Act 2004 for LSCB Member agencies to safeguard and promote the welfare of children
S47 Enquiry	The purpose of child protection s47 enquiries is to determine what if any action is needed to safeguard and promote the welfare of a child.
Child Practice Review	Child practice reviews take place after a child dies or is seriously injured and abuse or neglect is known or suspected. The purpose is to review what has happened and to learn from the experience so that current inter-agency child protection practice and arrangements can be improved. They are the equivalent of serious case reviews in England; case management reviews in Northern Ireland; and significant case reviews in Scotland.
Strategy discussion	The purpose of the strategy discussion is for the police, social care and the referring agency to share and discuss in detail all information gathered to date, as well as the nature of the concern. A decision must be made whether to initiate child protection section 47 enquiries or to continue with them if they have already begun.
Substance Misuse	Substance taking which harms health or social functioning' - substance misuse may be dependency (physical or psychological) or substance taking that is part of a wider spectrum of problematic or harmful behaviour.
Wales Strategic Migration Partnership	The Wales Strategic Migration Partnership (Asylum Seekers, Refugees & Migrants) plays a lead role working with a range of partners from the statutory, voluntary and community sectors in the development of strategic policies and initiatives on asylum seekers, refugees and migrants in Wales.