

# Y Pwyllgor Cynllunio / Planning Committee

21/11/2023

Lle a Chynaliadwyedd - Y Gwasanaethau Cynllunio  
Place and Sustainability - Planning Services

Lle a Seilwaith | Place and Infrastructure

Cyngor **Sir Gâr**  
**Carmarthenshire**  
County Council



**Ceisiadau yr argymhellir  
eu bod yn cael eu  
cymeradwyo**

**Applications  
recommended for  
approval**

# PL/00462

Kevin D Phillips

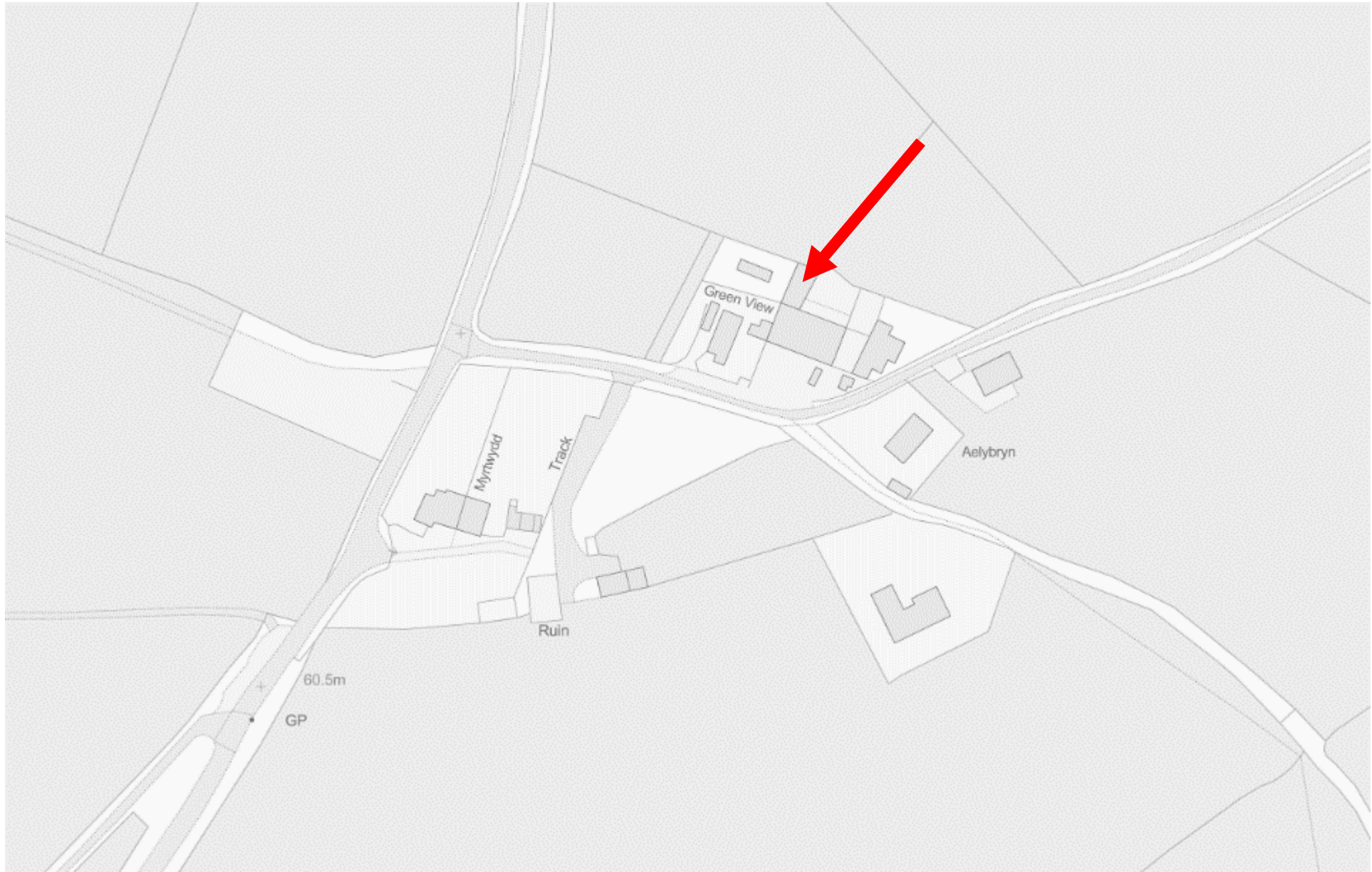
**Lle a Chynaliadwyedd - Y Gwasanaethau Cynllunio**  
**Place and Sustainability - Planning Services**

Lle a Seilwaith | Place and Infrastructure

Cyngor **Sir Gâr**  
**Carmarthenshire**  
County Council







PL/00462

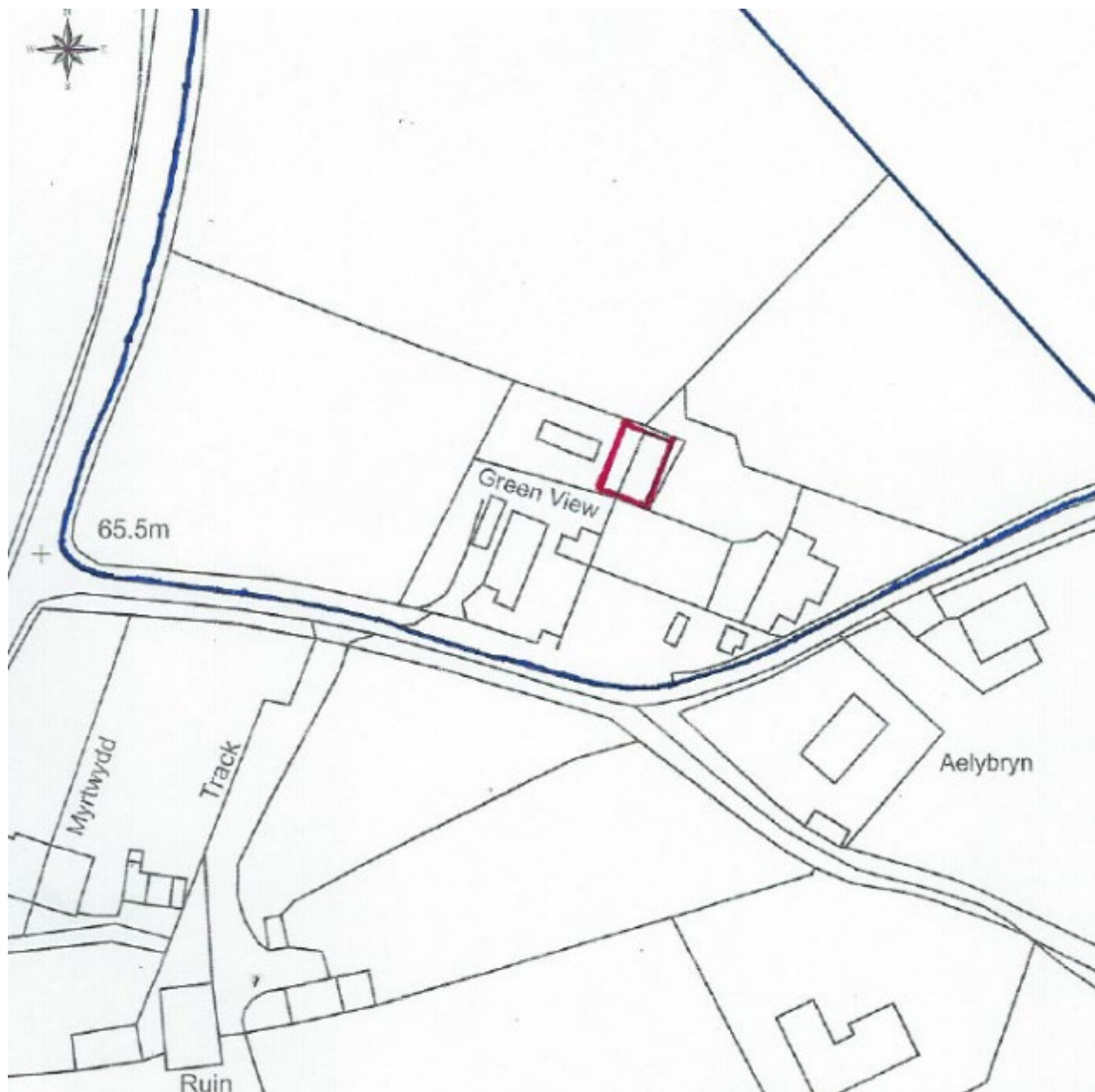
Aerial Photo



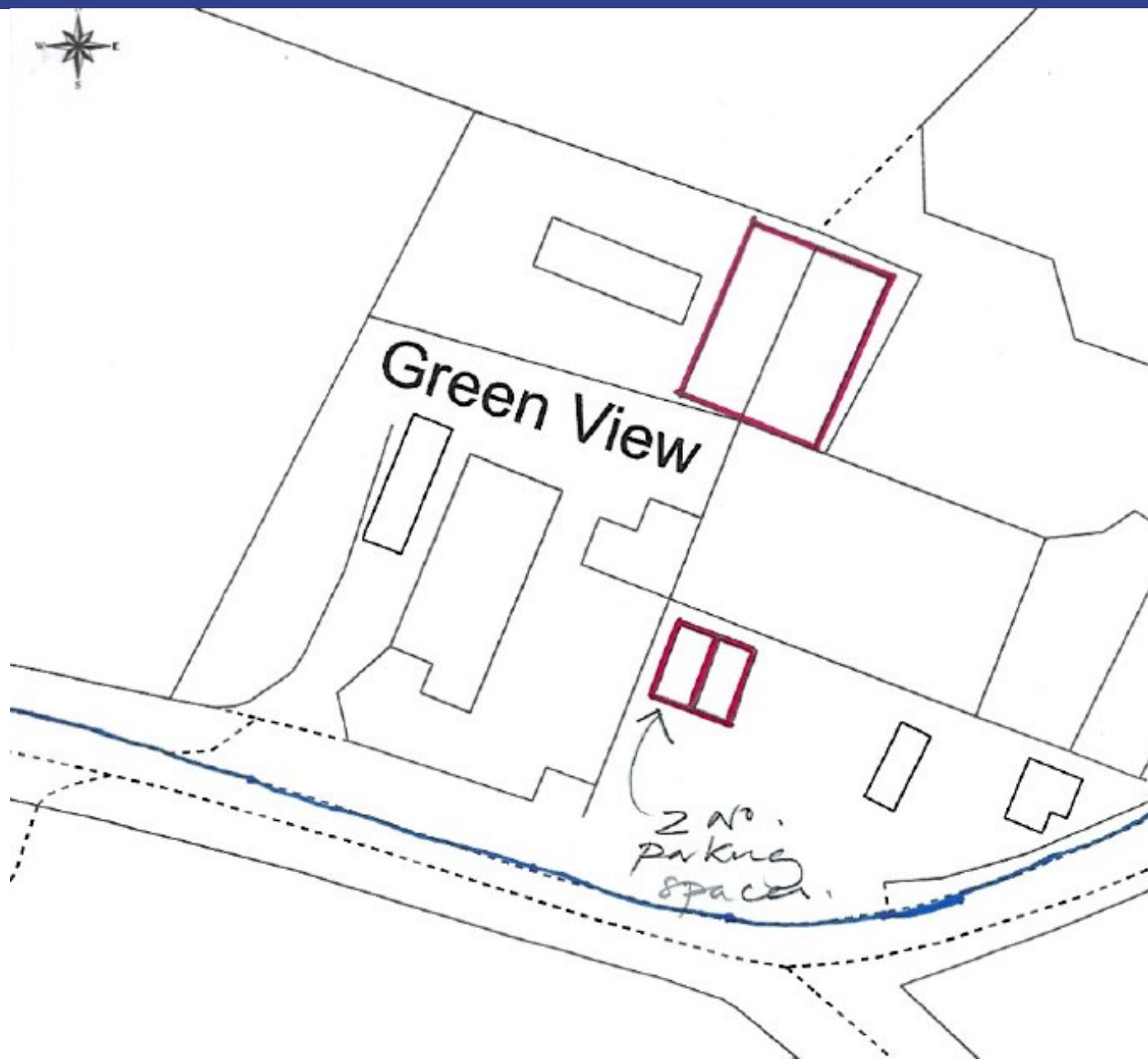
PL/00462

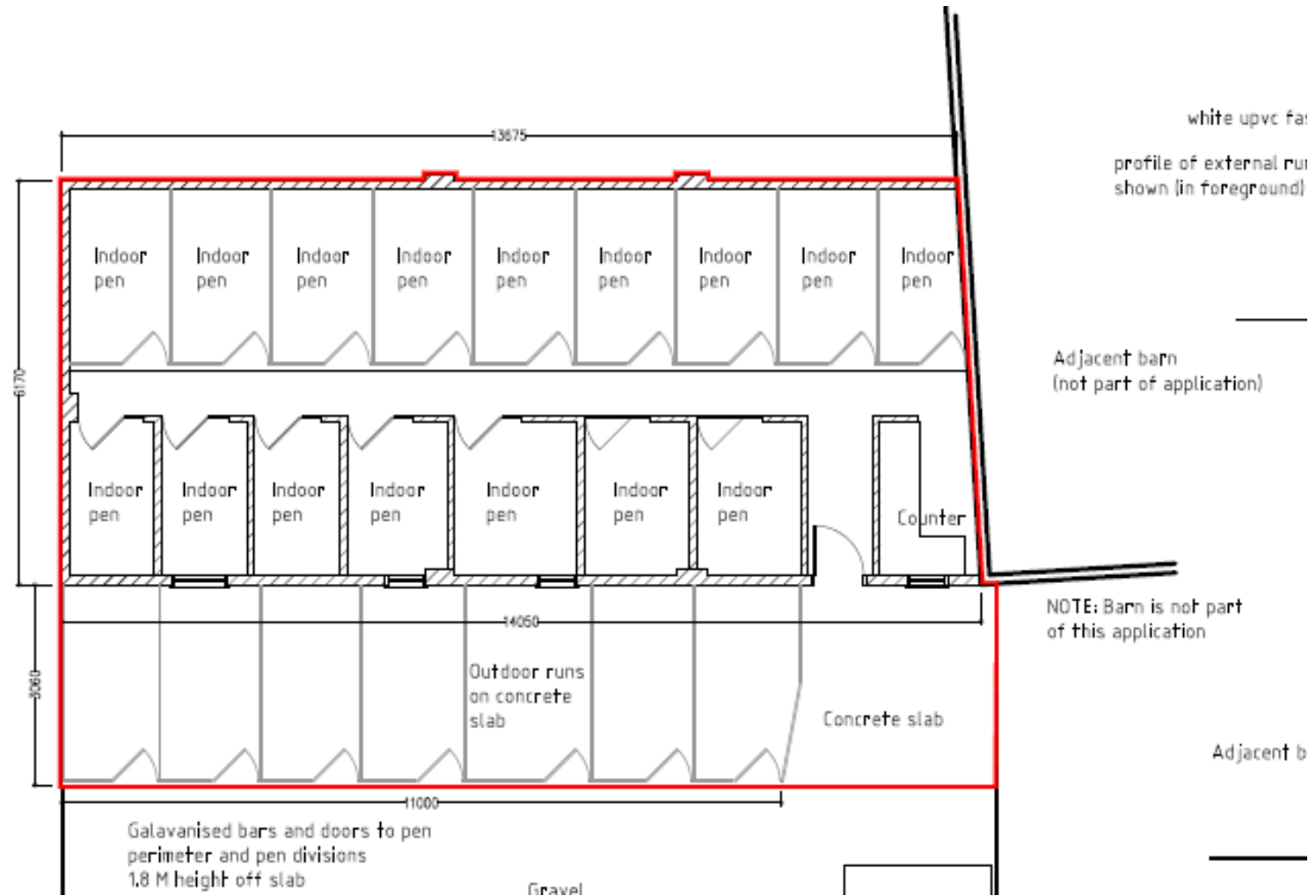
Aerial Photo

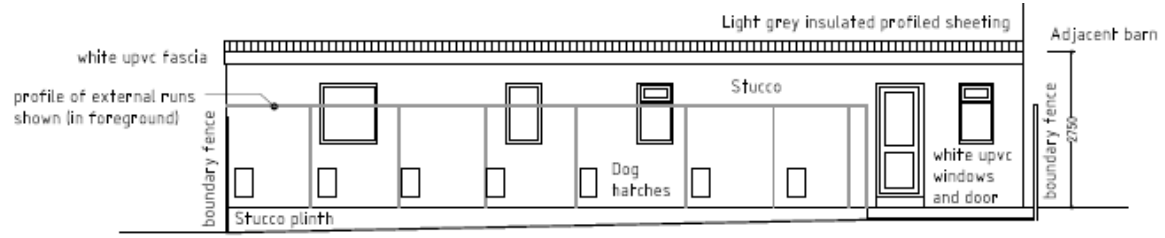




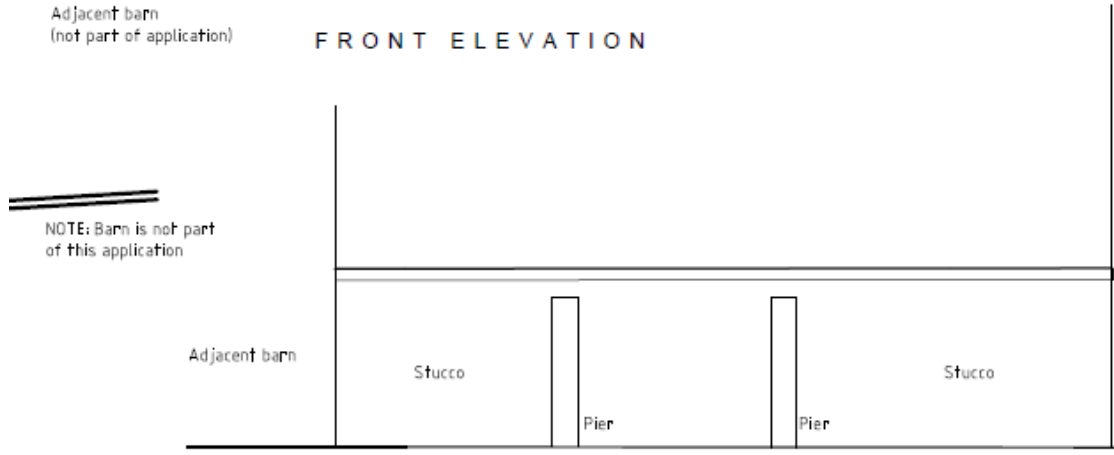






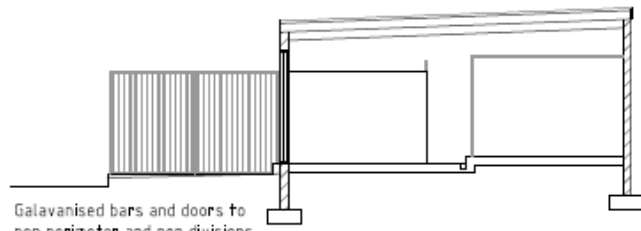


FRONT ELEVATION

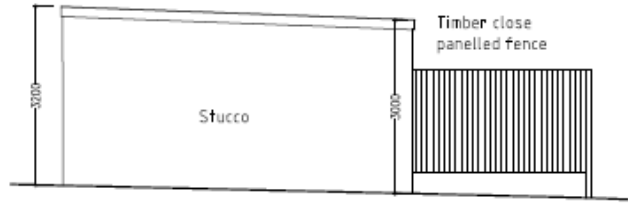


REAR ELEVATION

Timber close panelled Fence generally 1.8M in height

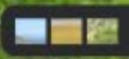


SECTION A - A



SIDE ELEVATION





PL/00462

Site Photo









# PL/06769

Paul Roberts

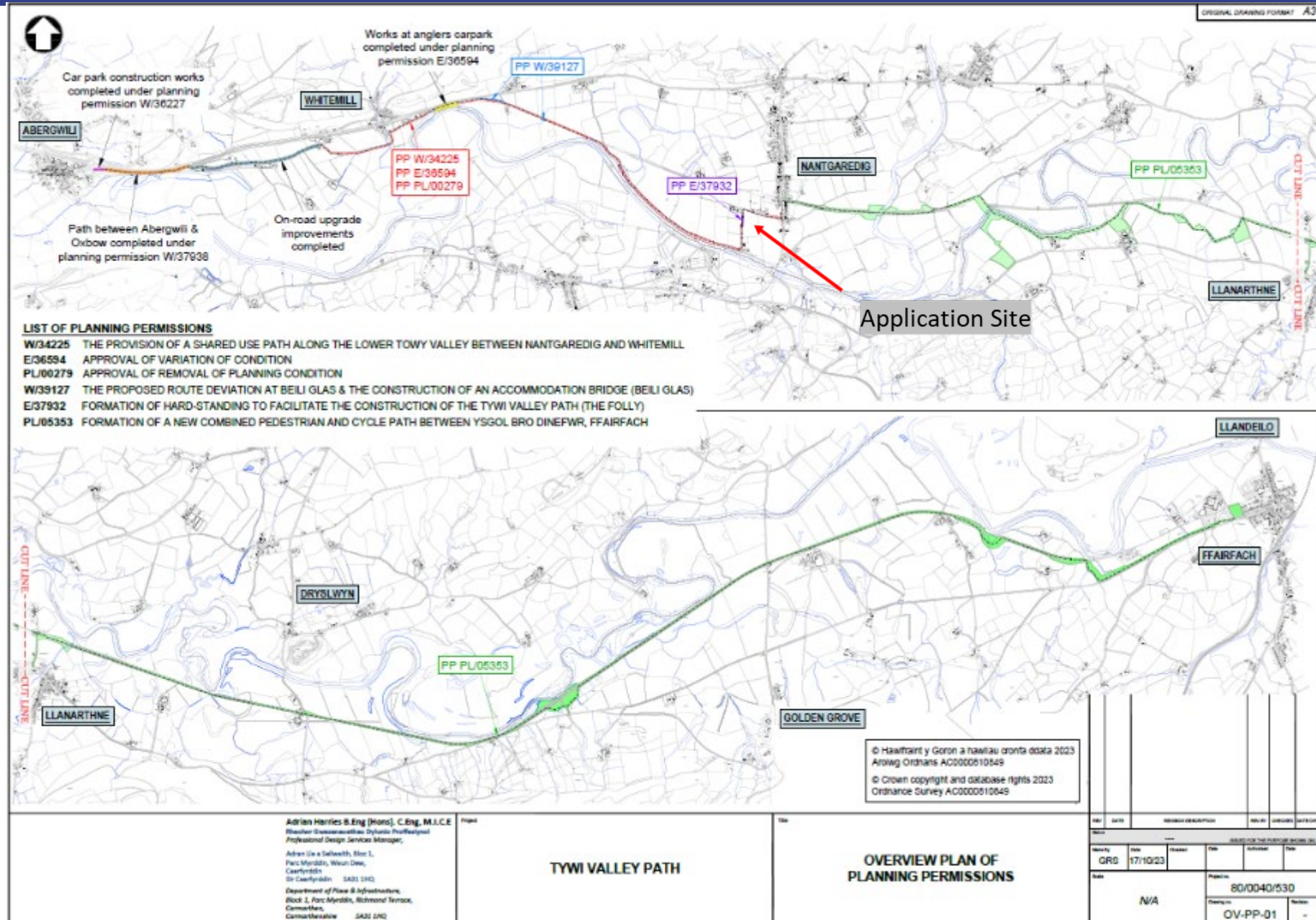
Lle a Chynaliadwyedd - Y Gwasanaethau Cynllunio  
Place and Sustainability - Planning Services

Lle a Seilwaith | Place and Infrastructure

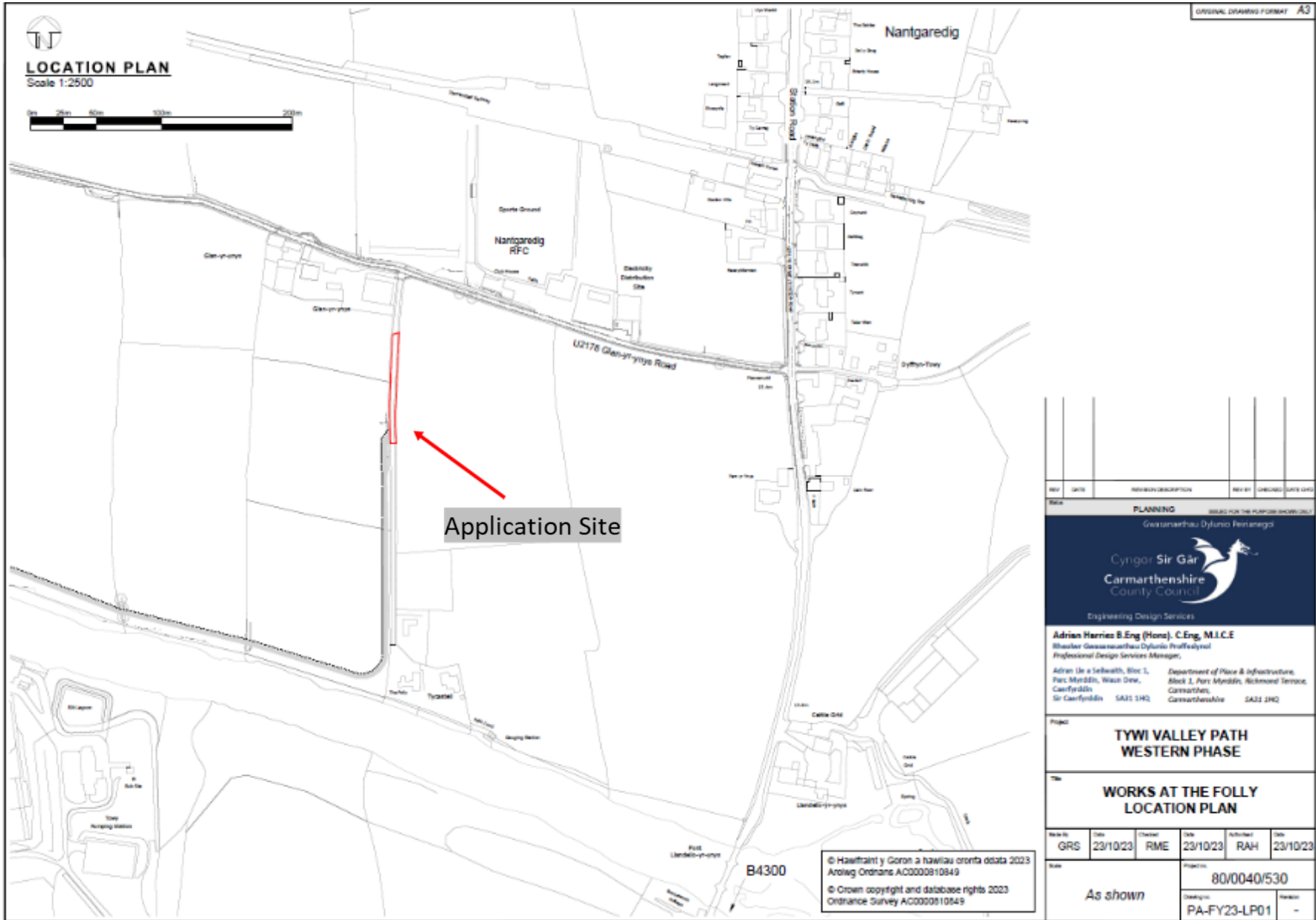
Cyngor **Sir Gâr**  
**Carmarthenshire**  
County Council



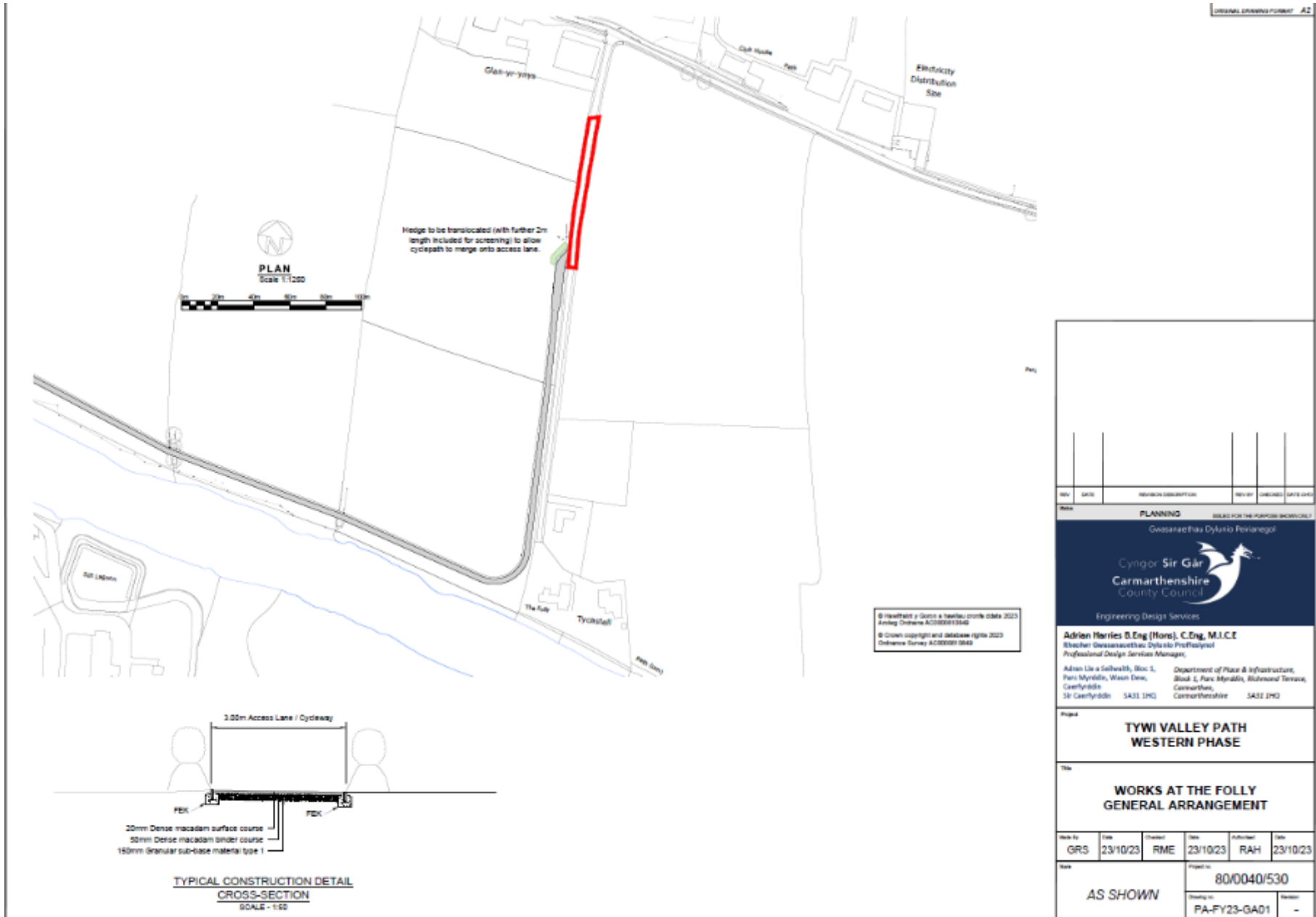
# PL/06769 Location of site within wider approved route of the Tywi Valley Path



# PL/06769 Location Plan



# PL/06769 Arrangement Plan



REV	DATE	REVISION DESCRIPTION	REV BY	CHECKED	DATE CHT

PLANNING

Prepared for the purposes shown only

Gwasparthau Dylunio Penrhainog

Cyngor Sir Gâr  
Carmarthenshire  
County Council

Engineering Design Services

**Adrian Harries B.Eng (Hons), C.Eng, M.I.C.E.**  
Blaecher Gwasparthau Dylunio Penrhainog  
Professional Design Services Manager

Adrian Lle a Sallwath, Bloc 1, Department of Place & Infrastructure,  
Pari Myrdol, Wael Dew, Bloc 2, Parc Myrdol, Alfordd Teras,  
Caerfyrddin, Carmarthen,  
Sir Caerfyrddin SA31 1HQ, Carmarthenshire SA31 1HQ

Project: **TYWI VALLEY PATH WESTERN PHASE**

Title: **WORKS AT THE FOLLY GENERAL ARRANGEMENT**

Drawn by	Date	Checked	Date	Authorised	Date
GRS	23/10/23	RME	23/10/23	RAH	23/10/23

Project No: 80/0040/530

AS SHOWN

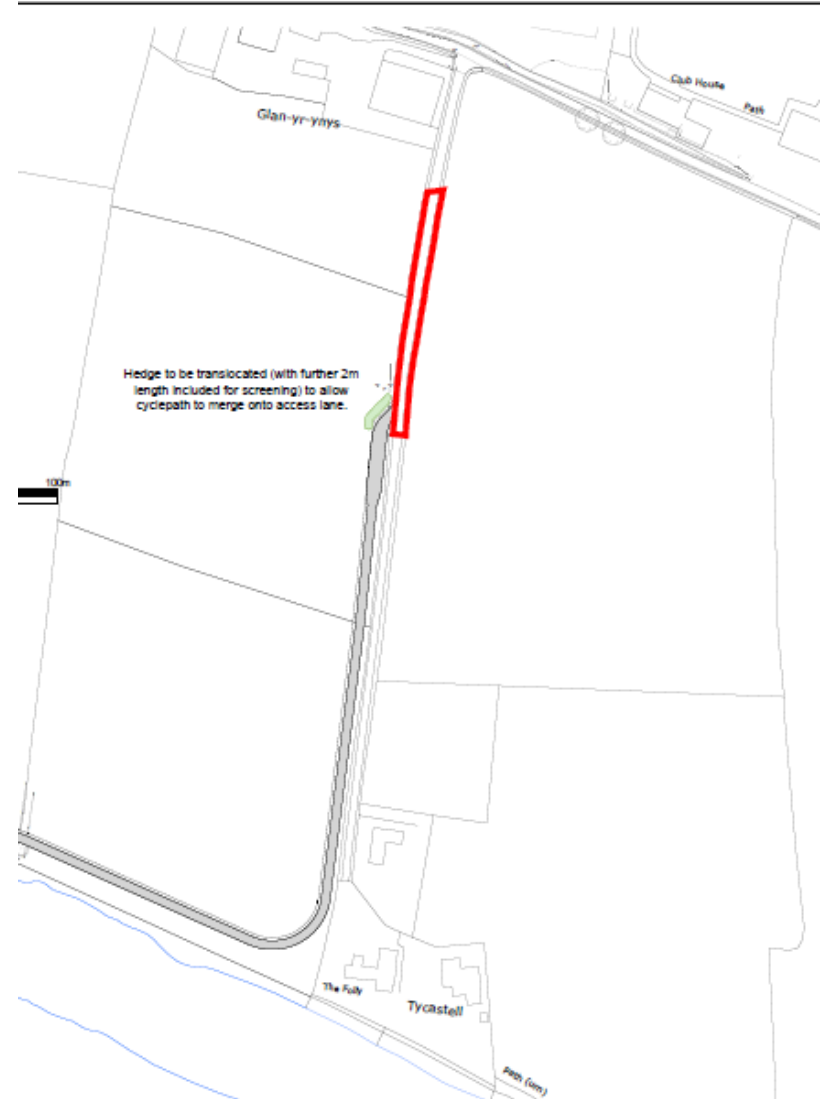
Drawing No: PA-FY23-GA01

# PL/06769 Comparison of Approved Routes of Path

Original Approved Route under Planning Permission W/34225

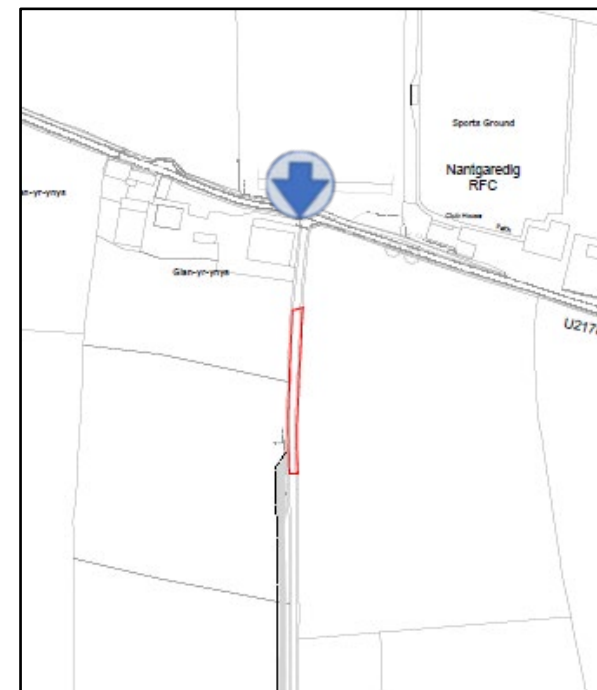


Amended route approved under Planning Permission E/37932 to address landowner request

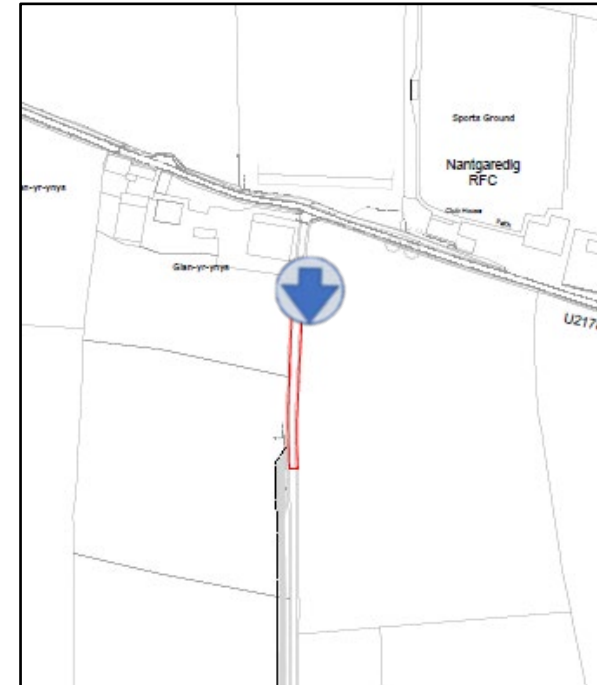


# PL/06769 Aerial Photograph



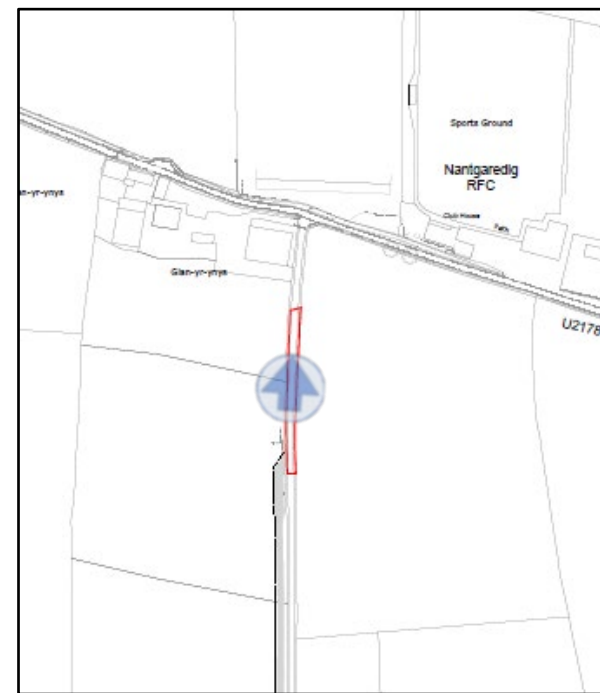


Residential properties of  
'The Folly' and 'Tycastell'

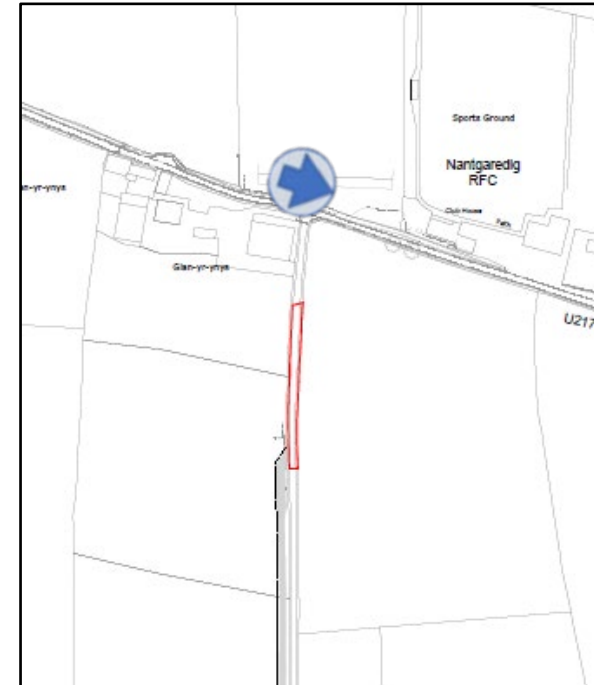




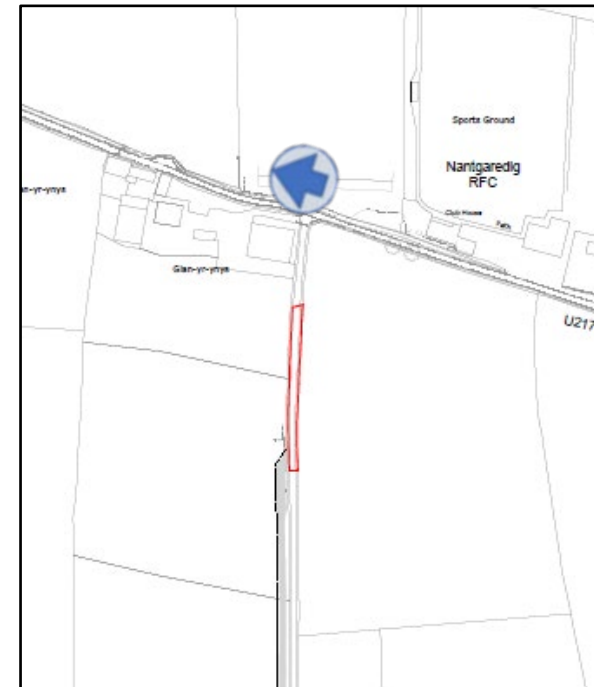
PL/06769



PL/06769



PL/06769



**Diolch | Thank you**

**[sirgar.llyw.cymru](http://sirgar.llyw.cymru)**

**[carmarthenshire.gov.wales](http://carmarthenshire.gov.wales)**

Cyngor **Sir Gâr**  
**Carmarthenshire**  
County Council

