

Carmarthenshire County Council

Rights of Way Improvement Plan



2019-2029



Executive Board Member Foreword

The County of Carmarthenshire has an extensive and largely rural network of Public Rights of Way (PROW). We recognise that this network of paths and ways alongside the County's coastline, open access land, country parks, woodland parks, picnic sites and nature reserves provide opportunities for recreation and tourism which in turn helps the health of the population and supports local businesses and the local economy.

In addition, more urban PROWs provide sustainable travel opportunities to schools, places of work and local amenities and facilities.

We must however also recognise the challenges of managing such a large and expansive network during this ongoing period of limited funding and reduced budgets.

The first Rights of Way Improvement Plan (ROWIP) for Carmarthenshire provided a clear strategic direction for PROW management in the County. In the 10 years since its publication the plan has helped to ensure the best use of resources to make more of the PROW network available and to enhance priority paths and areas of public access. This has involved successful partnership working with volunteers, Town and Community Councils as well as other local Authorities and organisations.

This revised ROWIP is founded on research and consultation with a variety of stakeholders and the public. It takes into account the successes and shortcomings of the first plan through its 10 year term and provides strategic direction to the Countryside Access team, enabling them continue to build on the many positive outcomes.

This plan is ambitious as we strive to achieve significant improvements to our public access network over the next 10 years. We thank all those who have contributed to the preparation of this new ROWIP, the delivery of which will allow more people to enjoy access to our open countryside, coast and the various local attractions and businesses in Carmarthenshire.



County Councillor Hazel Evans
Executive Board Member for
Environment



Councillor Peter Hughes-Griffiths
Executive Board Member for Culture,
Sport & Tourism.

Chairman of Local Access Forum Foreword

As the Chairman of the Carmarthenshire Local Access Forum, I welcome the opportunity to write this introduction on behalf of the Forum Members. This plan will set the agenda and goals for access to the Countryside, Parks, Towns and Villages in the County for the next 10 years and forms an important document through which the performance of the Local Authority can be measured.

Access for the public is extremely important with significant benefits for health, wellbeing and the economy all being linked to people using the Rights of Way network and other public spaces within Carmarthenshire. The Local Authority needs to ensure that this access is maintained and improved throughout the life of this plan and is encouraged to continue to provide opportunities for walkers, horse riders, cyclists and other leisure users throughout the County.

This plan will be regularly examined by the Forum to ensure that the Authority's objectives are being achieved and targets met.

Every member of the public has the right to attend our Forum sessions to observe the discussions and ask relevant questions on the recommendations that it submits to your County Council. If you want to find out more about the Forum please look on the Council's website where you will find copies of Minutes from meetings along with each year's annual report that is produced.

Please use your right to ensure the County Council listens to what you want with regards to access by getting in contact with them & the Forum.

Mark Hadley
Chairman
Carmarthenshire Local Access Forum



Contents

	Page
Executive Board Member Foreword	1
Chairman of Local Access Forum Foreword	2
1. Introduction	3
2. Geography & Demographics Of Carmarthenshire	9
3. The Public Rights Of Way Network	11
4. Other Public Access Opportunities	14
5. Maintenance	16
6. Improvements	17
7. Resources	18
8. Initial Consultation	20
9. The Local Access Forum	21
10. ROWIP Assessments	
a. Assessing The Delivery Of The Previous ROWIP	22
b. Assessment of Current and Likely Future Public Needs	22
c. Current and Emerging Legislation, Plans and Policies	29
d. Evaluation of Completeness – Record of Limitations	30
e. Summary	32
11. Aims And Policies & Action Plan	
a. Aims	33
b. Policies	34
c. Action Plan	38

Appendices

Appendix 1 – ROWIP Consultees

Appendix 2 - The Definitive Map & Statement for Carmarthenshire

Appendix 3 - Active Travel routes on the Rights of Way Network

Appendix 4 - Town & Community Councils participating in PROW maintenance

Appendix 5 - Assessment consultation responses

Appendix 6 - Analysis of WORS

Appendix 7 - 2007-2017 ROWIP review of actions & policies

Appendix 8 – Current and Emerging Legislation, Plans and Policies

1. Background and Introduction

In 2007 Carmarthenshire County Council published its first Rights of Way Improvement Plan (ROWIP). The ROWIP was decennial document, developed in accordance with section 60 of the Countryside and Rights of Way (CROW) Act (2000) which detailed Carmarthenshire's plan for the strategic management, development and improvement of the County's Public Rights of Way (PRoW) network up until 2017.

Through the term of the 2007-2017 ROWIP a great deal was achieved in improving and enhancing the PRoW network in Carmarthenshire. The actions and policies published in the previous plan led to the Authority being awarded ROWIP funding annually. A total of £726,449 ROWIP funding was received between 2008 and 2017 which allowed a significant number of the published actions and policies to be either partially or entirely implemented.

During the term of the last ROWIP we worked in 56 parishes and during this period over 300 routes were improved or reopened, hundreds of new pieces of access furniture were installed and dozens of footbridges ranging from 3m up to 33m in length were constructed on the network. ROWIP funded works also included surface and drainage improvements across the network and various promotional activities.

Under section 60(3) of the Countryside and Rights of Way (CROW) Act 2000, all Local Authorities in Wales are expected to undergo a statutory review of their present 'Rights of Way Improvement Plan' (ROWIP) within 10 years of publishing their original Plan.

Guidance published in 2016 directs that any emerging Improvement Plans must consider the following;

- The extent to which local Rights of Way (RoW) meet the present and future needs of the public;
- The opportunities provided by local Rights of Way for exercise and other forms of open air recreation and the enjoyment of the authority's area; and
- The accessibility of local Rights of Way to blind or partially sighted people and others with mobility problems.

The Improvement Plan must contain an action statement outlining how, as an Authority, Carmarthenshire County Council (CCC) can better manage the local Rights of Way network and undertake improvements.

The Carmarthenshire Local Access Forum (LAF) is a statutory body established under section 94 of the CRow Act 2000. Its role is to advise the Council on all countryside recreation matters. The LAF has had an advisory role during the production of this plan and will continue to have an input into the implementation of any actions arising from it.

Welsh Government guidance published in July 2016 outlines the ROWIP review process, as shown in Diagram 1 below.

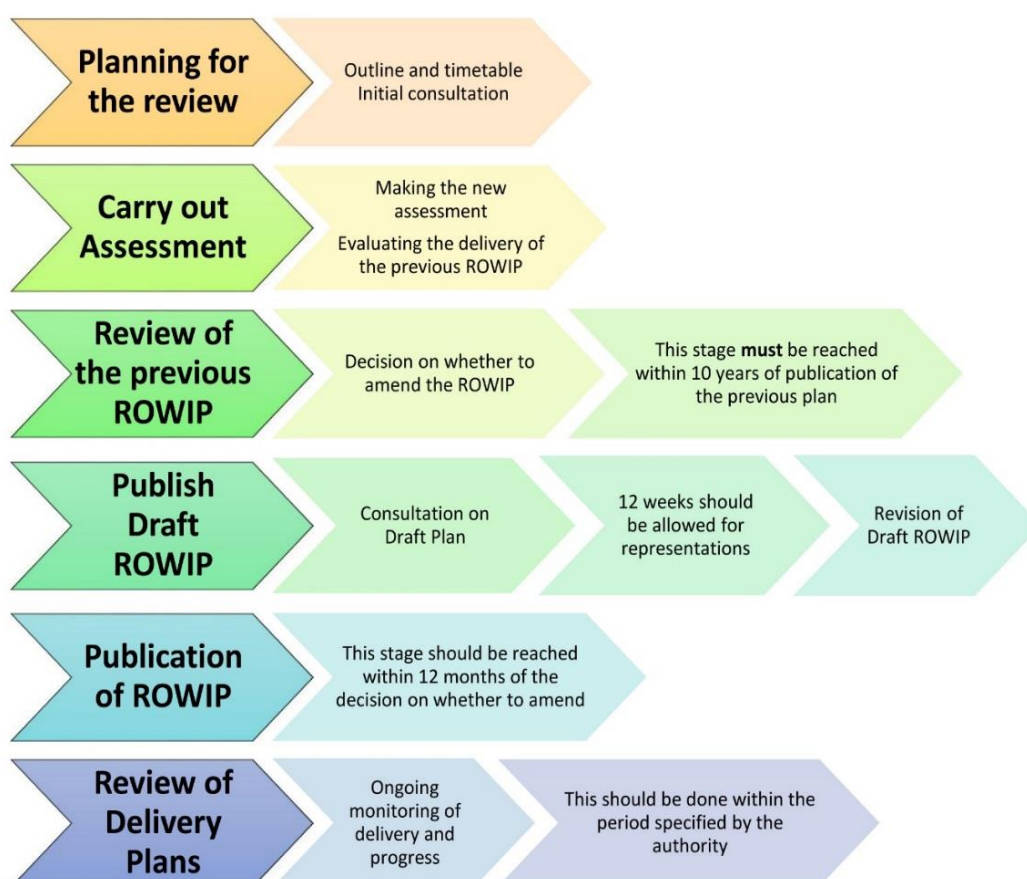


Diagram 1: Summary of the ROWIP process and timetable

Some of the actions and policies detailed in this plan are aspirational. These have the potential to bring significant benefits to local communities and improvements to the network, however, their delivery is subject to securing appropriate grant funding.

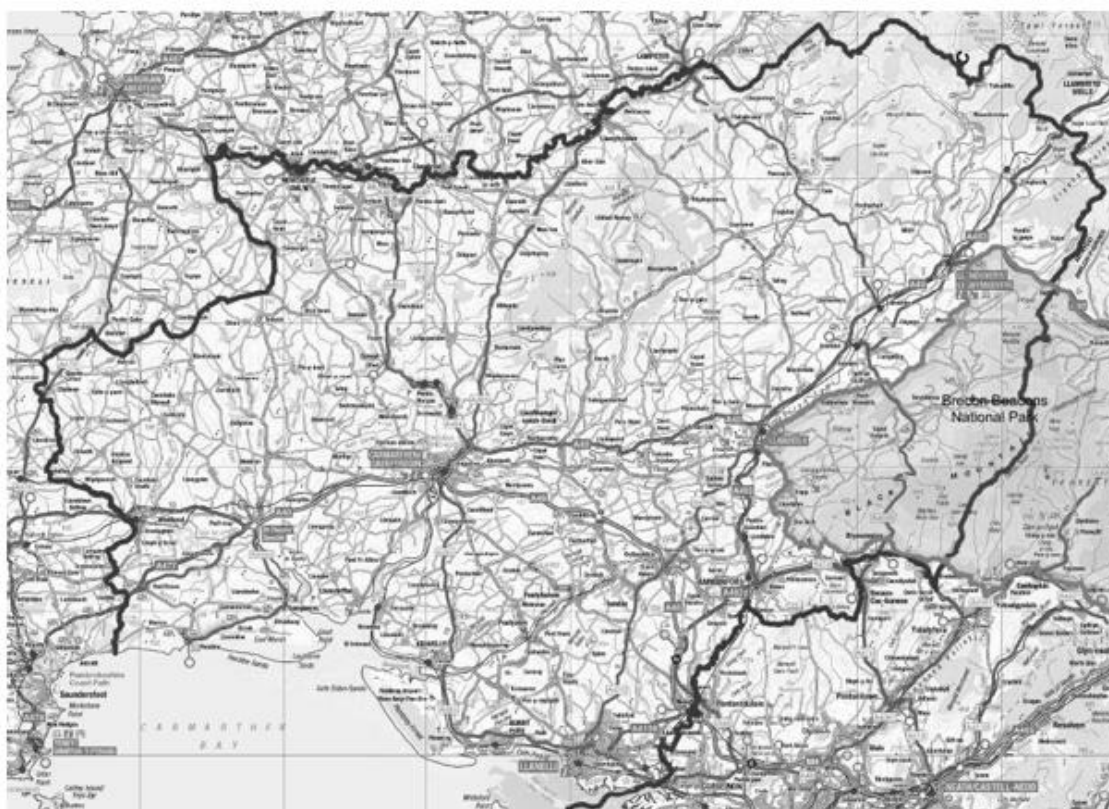
Section 11 of this plan presents, in detail, the aims, policies and action plan that will steer public rights of way and access management for the next 10 years. These have been developed following the assessment stage of the ROWIP process and their delivery will be reviewed on a two yearly basis to monitor their progress.

The draft version of this plan has been subject to the statutory 12 week public consultation as detailed above (see appendix 1 for the list of consultees). Each

consultation response received has been fully considered and, where appropriate, revisions have been made to the ROWIP to reflect those responses.

Preparation of the ROWIP falls within the scope of Article 2(a) of the Strategic Environmental Assessment (SEA) Directive. An SEA need only be undertaken if the implementation of a plan is likely to lead to significant environmental effects. The ROWIP was screened against the flowchart contained in 'A Practical Guide to the Strategic Environmental Assessment Directive' issued by the Office of the Deputy Prime Minister. Having completed this screening exercise it is the Authority's judgement that the aims, policies and actions contained within the ROWIP are not likely to lead to any significant environmental effects, we therefore consider that an SAE is not required.

The Carmarthenshire ROWIP covers all of the County with the exception of the section (largely the Black Mountains) which forms part of the Brecon Beacons National Park. There is currently an agency agreement between Carmarthenshire County Council and the Brecon Beacons National Park who manage and maintain the PRoW network that falls within the National Park boundary. Within that area the relevant ROWIP will be that prepared by the Brecon Beacons National Park Authority.



© Hawffraint y Goron a hawliau Cronfa ddata 2019 Arrolwg Ordnans 100023377
© Crown copyright and database rights 2019 Ordnance Survey 100023377

*Carmarthenshire County Boundary
(including Brecon Beacons National Park Boundary)*

2. Geography & Demographics of Carmarthenshire

Carmarthenshire is a diverse County with the agricultural economy and landscape of large rural areas contrasted with the urban and industrial south-eastern area. However, as a primarily rural County, the population density is low at 75.7 persons per sq. kilometre, compared with 140 persons per sq. kilometre for Wales as a whole. This scarcity of population is more apparent in rural Carmarthenshire than it is in the south and east where 65% of the County's population reside on 35% of the land.

The main urban centres of the County include Llanelli, Carmarthen and Ammanford. Carmarthen (due to its central geographic location) typically serves the needs of the County's rural hinterland. A number of rural villages and settlements are self-sufficient in terms of facilities and services, however, other smaller settlements lack services and facilities. The needs of residents in these latter areas are typically met by neighbouring settlements.

Carmarthenshire is justly renowned for its magnificent coast, quiet estuaries, steep wooded valleys and rugged uplands. Throughout much of the rest of the county there is a patchwork of woodlands and fields, bounded by the hedge banks that are frequently of historic importance. The network of PROW run all through the landscape made up by these habitats. This natural beauty of the county is a major factor on which the local tourism and recreation industries depend. Biodiversity is therefore fundamental to the physical, economic and spiritual well-being of all who live and work in Carmarthenshire.

The richness of Carmarthenshire's natural and cultural environment is highlighted by the number of sites designated protect and enhance their important nature conservation value, at a national and local level: 7 Special Areas of Conservation, 3 Special Protection Areas, 1 Ramsar site, 82 Sites of Special Scientific Interest (with a further 12 within the Brecon Beacons National Park), 5 National Nature Reserves, 5 Local Nature Reserves and 7 registered landscapes. The County also boasts sites designated at the international level to protect and enhance important nature conservation value, as well as striking landscapes and distinctive historic towns and villages.

The importance of the County's built heritage is borne out by the 27 conservation areas, 470 Scheduled Ancient Monuments (ranging from Prehistoric to post-Medieval/Modern features of cultural historic interest) and a large number of listed buildings.

Agriculture in Carmarthenshire dominates the rural landscape with the agricultural industry and in particular dairy and sheep farming establishing the County as one of the most important agricultural areas in Wales. Some 203,700 ha of land within

Carmarthenshire is classified as agricultural land with the majority classified as grade 3a and 4 with a small tranche of grade 2 land in the south-east of the County.

At the LDP base date (2006) the population for the County was estimated to stand at 178,043 with 78,213 households (2006 WG-based projection). The Welsh Government also published a set of 2008-based population and household projections; however the most recent data in the 2011 Census identified the population of Carmarthenshire at 183,777 with 78,829 households.

As displayed in Table 2.1 the population of Carmarthenshire as a whole, is older than the national average.

Table 2.1 Population of Carmarthenshire (2011 Census)

AGE	CARMARTHENSHIRE	WALES
Age 0 to 4	5.6%	5.8%
Age 5 to 9	5.3%	5.3%
Age 10 to 14	5.8%	5.8%
Age 15 to 17	3.8%	3.7%
Age 18 to 24	8.2%	9.7%
Age 25 to 29	5.2%	6.1%
Age 30 to 44	17.3%	18.6%
Age 45 to 59	20.9%	19.9%
Age 60 to 64	7.3%	6.7%
Age 65 to 74	11.1%	9.8%
Age 75 to 84	6.9%	6.1%
Age 85 and over	2.8%	2.4%
Mean Age	42.3	40.6
Median Age	44	41

3. The Public Rights of Way Network

All Public Rights of Way in Carmarthenshire – footpaths, bridleways and byways are recorded on the Definitive Map and Definitive Statement which is held in the Countryside Access office. A full explanation of the Definitive Map and Statement as the conclusive legal record of public rights of way in the County and how the County Council manages and amends the record is provided in appendix 2. Digital mapping software which provides a digital version of the Definitive Map is used by the Authority for day to day management of public rights of way. This digital information is also available to the public online however to view the legal record members of the public are invited to view the hard copy of the Definitive Map at the Countryside Access office.

The Public Rights of Way (PROW) network provides a valuable recreational resource for use by residents and visitors to Carmarthenshire alike. They provide unrivalled access to the countryside and offer sustainable methods of travel by enabling safe use of alternative modes of transport to motor vehicles.

Table 3.1 below provides details of the respective numbers and length of recorded routes in Carmarthenshire, being the third largest local authority network in Wales.

Table 3.1 Network Routes & Length (March 2018)

Route Type	Number of Routes	Length (km)
Footpath	2951	2198.0
Bridleway	136	164.8
Byway Open to All Traffic	88	77.9
Restricted Byway	1	1.6
Totals	3176	2442.4

Our statutory responsibilities in respect of the PROW network include:

- Signposting and waymarking of footpaths, bridleways and byways;
- Keeping up to date the Definitive Map and Statement which is the legal record of Public Rights of Way;
- Maintaining the surface of a Public Right of Way to a standard appropriate for the purpose for which it is used;
- Maintaining bridges over natural river courses;
- Keeping the Public Rights of Way open and available by ensuring that other partners fulfil their responsibilities.

Countryside access opportunities offered by the PRow network contribute towards health and well-being initiatives and improving quality of life for residents. As they are free to access and enjoy, they can also promote social inclusion.

According to the Wales Outdoor Recreation Study (WORS) 2016-2017, a wide range of activities are enjoyed by people visiting the countryside.

The study showed that walking was the main activity undertaken by nearly three quarters of all adults in Wales during the last 12 months. Social recreation activities were also very popular, with nearly a third of people enjoying picnicking.

Table 3.2 Reasons Why People Visit the Countryside (2016-17 WORS Study)

Activity	Percentage of adults taking part 2016/17
Walking	71.4%
Picnicking	31.3%
Taking children to play area outdoors	31.1%
Informal games (e.g. frisbee or golf)	19.8%
None of these	19.5%
Running	16.9%
Wildlife watching	16.2%
Road cycling	13.0%
Swimming outdoors	12.6%
Off-road cycling or mountain biking	9.1%
Fishing	6.5%
Other watersports	4.8%
Rock climbing or caving	3.6%
Field sports (shooting / hunting)	3.5%
Horse riding	3.0%
Off-road driving or motorcycling	2.9%

Other outdoor activities	2.9%
Motorised watersports	1.5%
Don't know	0.2%

The network also plays a part in the economic development of Carmarthenshire through either direct or indirect spend in the County. Spending on tourism services, equipment, hospitality, travel, parking and any number of other support services all contribute to the local economy.

A Natural Resources Wales (NRW) report published in 2013 demonstrates the economic value of well managed and promoted countryside access provision. Their report concluded that the Wales Coast Path, which circumnavigates the coastline of Wales, generated approximately £16 million of added value to the Welsh economy (The Economic Impact of Wales Coast Path Visitor Spending on Wales 2013).



Telpyn Point

4. Other Public Access Opportunities

In addition to the PRow network there are other valuable opportunities to access the countryside such as:

Open Access Land designated under the CRow Act, consisting of open country such as mountains and moorland and 'registered common land'. There are approximately 7600 hectares (ha.) of Open Access Land where the public have the right to roam on foot. This includes areas of 'dedicated open access land' where landowners allow free open access. An example is the Welsh Government who allow free open access to their woodland estate and in addition, also offers permissive access opportunities for mountain biking, horse riding and carriage driving.

Unclassified Road Network amounting to approximately 170 Unclassified Roads (often referred to as "Green Lanes") with vehicular rights, totalling some 150 kilometres of largely unsurfaced routes, which play a significant role in the provision of recreational routes, for all users.

Cycleways developed in response to the rapidly growing cycling market in Wales. Carmarthenshire has made significant developments in improving the opportunities for cyclists with the ambition to become the 'cycling hub of Wales'. The creation of numerous cycleways in the County which include the National Cycle Network and Safe Routes in the Community have also created opportunities for other users such as walkers, less able and disabled users and occasionally horse riders.

Under the Active Travel Act (Wales) 2013 Carmarthenshire continues to identify and improve routes for cyclists and walkers to make active travel the most attractive option for shorter journeys and to connect key sites and communities. Appendix 3 shows the number of Active Travel routes in Carmarthenshire which follow parts of the Public Rights of Way network.

- Category A – Cycle lane forming part of the carriageway, commonly 1.5m strip adjacent to nearside kerb.
- Category B – Cycle track – a highway route for cyclists not contiguous with the public footway or carriageway. Shared cycle/pedestrian paths, either segregated by a white line or un-segregated.
- Category C – Cycle trails, leisure routes through open spaces, not necessarily the responsibility of highway authority but may be maintained by an authority.
- On Road - signed route but using normal carriageway, no segregation.

Carmarthenshire County Council Sites largely owned and managed by the Authority providing valuable recreational access, often to user groups with poorer provision in the wider countryside for example people with physical disabilities and horse riders.

Coastal Access to the foreshore where public access rights exists. Beaches like Pembrey, Marros and Pendine are accessible for walking and very popular with horse riders. The nationally recognised Wales Coast Path (WCP), a linear route around the coast of Wales established between 2007 and 2012 which provides unrivalled access to the coastline of Carmarthenshire on foot, through a range of habitats and coastal landscapes. Constant improvements are being made to the WCP with help from Welsh Government funding to ensure it is as widely accessible as possible.

Permissive Access delivered in a number ways, such as through Glastir Agri-Environmental Funded Schemes, privately by individual landowners or over National Trust properties, primarily for walkers.

“Lost Ways” are routes which carry public rights over them which were in existence before 1949 but are not currently recorded on the Definitive Map and Statement for Carmarthenshire.



Llanllwni Mountain

5. MAINTENANCE

In managing the network of Public Rights of Way in Carmarthenshire the Council has to maintain surfaces of routes and bridges, signposts where they leave a metalled road and ensure that the routes are free from natural & man made obstructions. The Council must also ensure that landowners carry out their responsibilities, which includes the maintenance of Rights of Way furniture such as stiles and gates, and the removal of vegetation encroaching from the sides or above the Rights of Way.

Historically the maintenance of the Rights of Way network on the ground has been greatly under-funded and under resourced. Maintenance is a vital element for Rights of Way - neglect of essential small-scale strimming and clearance results over time in major works of tree/shrub clearance from routes and far greater issues from the perspective of both owners and users.

Since the first ROWIP 2007-2017 many aspects of the PROW maintenance have changed. Of the original thirty four active Town and Community Councils only six now carry out the same duties. The primary means of maintenance was, and still is, carried out by the Ranger Service. Nine fulltime rangers were employed to carry out these works but due to ever increasing budgetary constraints (£149,132 overall reduction in controllable maintenance budget between 2007/08 and 2017/18) the number of rangers have now been reduced to four.

As a consequence of this we now use approved contractors, on a part time basis, to do the majority of the work of vegetation clearance. This leaves the rangers free to concentrate on coordinating work with landowners and dealing with the more demanding and complex issues.

To better meet the needs of the residents and visitors to Carmarthenshire, and to meet the County Councils statutory duties, an increase of resources would be required. We aim to work closer with Town and Community Councils to encourage greater involvement from them to maintain their local PROW and help to identify a list of key priority routes within their communities.

Appendix 4 lists the participating Town & Community Councils together with details of the number of Rights of Way maintained within their areas.

It is important that environmental sustainability is considered when we plan maintenance or enhancement works. The timing and manner of maintenance will be carefully considered with regard to any relevant protected species legislation so as not to have adverse impacts on protected species or habitats. Opportunities for action to enhance habitats and species will also be sought.

6. IMPROVEMENTS

In recent years improvements on the network have been carried out using the limited PROW budget enhanced by the annual ROWIP grant (now ceased), Wales Coast Path funding and additional funding contributions from organisations such as the British Horse Society and Carmarthenshire Riders.

Since the implementation of the first ROWIP and with assistance from the funding sources mentioned above that has at least doubled the effective budget for Public Rights of Way improvements, much has been achieved.

- 1355 Public Rights of Way and other routes with public access have been worked on, this amounts to 1272kms of public access and can be broken down into:
 1. 1,099 kms footpaths,
 2. 98km bridleways,
 3. 46kms of Byways
 4. 29kms unclassified roads
- Improvement work has been completed on:
 1. The Wales Coastal Path,
 2. Tywi, Teifi and St Illtyd Trails
 3. The Heart of Wales Trail.
 4. The Cothi Trail
- The Rights of Way software package CAMS continues to be developed and improved and more information input / extracted to give meaningful reports such as those provided to the Local Access Forum at the quarterly meetings.
- 22 County Walks have been established and promoted via Tourist Information Centres and other outlets.
- Positive reaction has been received from local councils, public bodies, other organisations, land owner groups and the general public.

However, there is much more to do and the Authority will continue to seek partnership funding to enable further improvements and better promotion of walks and trails in the County.

As these improvements are completed, over time, the Maintenance team will be able to give more attention to maintenance issues. The proper maintenance of County Walks and other promoted routes must be a priority issue. The need for sustainable maintenance will increase in importance over the Plan period and is a critical factor for the ROWIP to address, subject to the availability of sufficient funding.

7. RESOURCES

In the last decade, despite reduced funding and maintenance staff resources (as outlined in section 6) the proportion of the network that is open increased from 2012 to 2017, with only a slight reduction in 2018 as evidenced by table 9.1.

Irrespective of resources our responsibilities remain the same, albeit the remit has increased with the addition of facilities such as the Heart of Wales Trail and the Cothi Trail as two examples. Measures are in place to deal with most of these issues, but the number of reports and list of requests for maintenance continues to grow due to improved contact with user groups, Community Councils and the public.

The Wales Coast Path receives Welsh Government funding through NRW which means this important national trail is adequately resourced at present.

A continuation of the annual capital budget for maintenance of £50,000 is critical. This is used as match funding for grants and to purchase materials, hiring of plant and for the use of seasonal contractors for less complex project works and general maintenance purposes. This allows significant improvements to the network to develop easier access for people of all abilities. Given the present circumstances it will be increasingly important to encourage and support Town and Community Councils to take responsibility for some of the key paths in their areas. We anticipate a mixed response to this as historically Town and Community Councils have shown a diverse range of attitudes towards getting involved with the ROW network within their boundaries.

An increased use of contract staff in 2017- 18 to cover a vegetation clearance schedule of work has enabled the Rangers to concentrate on liaison with landowners, carry out our statutory requirements and to manage and support contract staff. Promoted routes have been reduced in number in order to focus efforts and limited resources on the best walks and rides in the County to maintain them to a high standard. Plans are in place to improve the quality of information on the County Council's *Discover Carmarthenshire* website to encourage walking, cycling and horse riding for residents and to support local economies through tourism.

We intend to work with volunteers to help survey the network and to carry out simple lightly supervised tasks.

In conjunction with the Countryside Access team, greater use is now made of the CAMS digital mapping system to log, prioritise and record all works carried out or planned and is available for use by more staff than previously. Upgrading and improving the system along with ongoing staff training is essential to ensure that the Authority gets the most out of CAMS.

The Countryside Access team, responsible for managing the Definitive Map, enforcing the Public Rights of Way network and processing legal Orders, has maintained staff numbers since the implementation of the first ROWIP with the exception of periods of reduced staff numbers where vacant posts have not been filled.

As outlined in appendix 2, a significant backlog of legal Orders exists within the Countryside Access team which dates back to a period when the service was operated by very low staff numbers. The resource needed and time required to clear the backlog is difficult to quantify due to the unpredictable timescale of the Order making process combined with other the other statutory duties met by the team.

The increased remit and higher reporting numbers outlined earlier in this section also impact the available resource within the Countryside Access team but with current staff numbers progress is being made in processing some of the older legal Orders as well as newer Order applications, enforcement matters and continuous review of the Definitive Map and Statement.

Despite the significant resource challenge, improvements were achieved year on year up until 2017 as shown in the Performance Indicator results table below.

The annual Performance Indicator (5% sample) has long been the primary method of obtaining data to record the current condition of the network. From 2015 there was no longer a statutory requirement to carry out our annual performance indicator surveys however two years following the removal of the requirement Carmarthenshire recognised the significant value of the PI results and elected to resume PI style surveys of the network from 2017 as an information gathering exercise. We intend to continue this on an annual basis subject to sufficient resources to complete the process.

Table 9.1: Performance Indicator (PI) (5% Sample) Survey Results

Measures	% Pass						
	2012	2013	2014	2015	2016	2017	2018
Open, Accessible and Signed (CMT/001 PI)	37.9	34.6	41.4	-	-	47.6	45.9
Open and Accessible	52.2	50.8	53.2	-	-	59.3	52.2
Open	52.2	51.1	53.9	-	-	59.3	52.3

8. INITIAL CONSULTATION

In March 2017 initial consultation letters were sent to a variety of stakeholders to outline the steps that CCC would be taking to review the Carmarthenshire ROWIP.

Local Authorities: Ceredigion County Borough Council, Neath Port Talbot County Borough Council, Pembrokeshire County Council, Powys County Council and Swansea City Council.

A summary of Statutory Stakeholders: National Authorities, Brecon Beacons National Park, Tourism Businesses, Local Access Forums, Natural Resource Wales.

The purpose of this was to advise stakeholders of CCC's intention to review the ROWIP and the timetable for doing so.



The Carmarthen Fans

9. THE LOCAL ACCESS FORUM

The Carmarthenshire Local Access Forum (LAF) played an important role in developing and shaping this Plan, particularly in respect of the aims and policies.

4 main consultation meetings were held with the LAF in respect of the new ROWIP.

1. An introduction to the process and to the Capita consultant appointed to undertake the review,
2. A workshop with the subcommittee to review the actions and policies in the previous ROWIP
3. A discussion group to comment on first draft
4. A feedback session to go through responses received following 12 week consultation

In accordance with WG Guidance, CCC has engaged the LAF in the following way;

WG ROWIP Guidance	LAF Involvement
Assisting with dialogue through contacts with national, regional and local organisations.	The LAF assisted by providing local contacts to which consultation material was circulated.
Informing the data gathering exercise including the extent to which local Rights of Way meet the present and likely future needs of the public.	LAF ROWIP subcommittee members were engaged in a review of the actions and policies of the previous ROWIP and proposed new actions and policies for the revised ROWIP
Advising on how the network could be improved for the public and where there are particular land management concerns.	The LAF ROWIP subcommittee proposed areas for improvement and this information was used to develop appropriate actions on the Action Plan.
Advising on the related issue of access to open countryside especially where new linear routes may be desirable.	The LAF have identified issues on open access land during regular LAF meetings, this information was taken into consideration during development of new ROWIP
Providing advice on prioritising implementation.	The LAF provided assistance in defining the High, Medium and Low actions within the Action Plan.
Commenting on published draft plans.	The LAF were given opportunities to provide comment and feedback on the emerging Plan.
Assisting in the resolution of conflicts between different representations when plans are issued for consultation.	Not necessary.

10. ROWIP ASSESSMENTS

Following the decision to produce a new ROWIP a number of assessments were carried out to inform and support the new document.

a. Assessing the Delivery of the Previous ROWIP

Section 6 outlines the achievements delivered during the term of the 2007-2017 ROWIP with the support of the associated ROWIP funding awarded by Natural Resources Wales.

A comprehensive review of each of the Actions and Policies contained within the 2007-2017 ROWIP was undertaken to evaluate the success of its delivery. This was first completed as an in-house exercise before being extended to the LAF ROWIP subcommittee where the actions were briefly reviewed then considered for suitability in the new ROWIP. This evaluation is presented in appendix 7.

The evaluation process highlighted those actions and policies that were realistic, within the resources and time available. This helped to inform the actions and policies going into the new ROWIP.

b. Assessment of Current and Likely Future Public Needs

In accordance with WG Guidance a 12 week consultation period was undertaken to assess user needs. The results of this exercise are presented in appendix 5. Due to the low participation rate in the consultation exercises the robustness of the data gathered was poor and therefore of limited value. The policies and actions developed for this ROWIP were therefore not based heavily on this data but rather on other available published data, Local Access Forum input and staff knowledge and expertise.

The Welsh Outdoor Recreation Survey (WORS) attempts to measure participation levels and behaviours in outdoor recreation by adults living in Wales, including the associated health and economic benefits. It also covers public attitudes towards biodiversity, along with actions that people take to protect the environment.

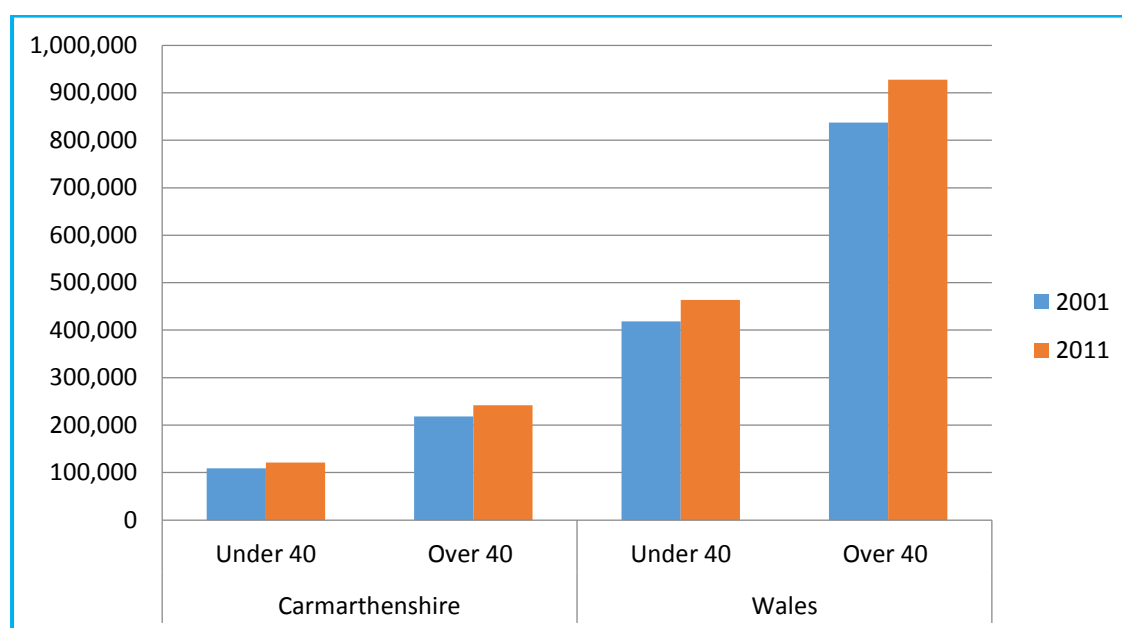
It is the largest survey of public engagement with the environment by people living in Wales, with around 6000 people interviewed throughout the year over each full 12 month period. It includes adults of all ages and backgrounds who live in both rural and urban areas.

To date the survey has been undertaken in 2008, 2011 and 2014 and comparison year on year has been used to identify any statistically significant trends in recreational behaviour or demand over that time.

Analysis of the WORS allowed a unique insight in the activity levels, behaviour and attitudes of people in Wales, and this information has been used to help shape and fine tune this Improvement Plan, as demonstrated in appendix 6.

Within the context of this Improvement Plan the WORS survey frames some of the key challenges faced by CCC in terms of attracting more people to countryside. It is known that the County has an aging population, as demonstrated by graph 9.1

Graph 9.1: 2011 Population Age



According to 2011 Census, the population in Carmarthenshire is ageing. Between 2001 and 2011 the number of people aged between 0 – 39 declined by approximately 3,500, while over the same period of time the number of people aged between 40 and 80 increased by over 9,000.

Within these ages groups there was a decline of 13% for those aged between 30 – 34, and a decline of 14% for those aged between 35 and 39 between 2001 and 2011. In the 60 – 64 age bracket there was an increase of 36%, while the number of people in the 65 – 69 age bracket increased by 27% over the same period.

It is important that the emerging ROWIP contains plans and policies designed to cater for this trend. In addition when developing an Action Plan it is important to understand the barriers that prevent people from accessing the Countryside on a more regular basis.

Barriers

According to the WORS survey for those reporting no visits in the last year, the single most common reason (28%) was a perceived lack of free time, whilst 24% cited physical disability, 19% other health reasons and 19% old age. In contrast, only 2% said there was nowhere suitable for them to go, and 1.7% said they didn't know where to go.

However, there were some significant gender and age-related differences. For older people (over 65), the main barriers were old age (41%) and physical disability (34%). For younger adults (16-44) the main barrier was lack of time (57%). Equally, women were more likely to cite physical disability and old age as their main barrier, whilst for men it was lack of time. For respondents who reported not having made a visit to the outdoors in the last four weeks, the most common reason (46%) was bad weather. The WORS survey also reports that most visits were relatively short; 50% lasted an hour or less. A substantial majority (77%) were two hours or less.

Whilst the ROWIP can do little to influence issues relating to lack of time or weather, actions can be developed so that facilities to improve access for the elderly and those with reduced mobility are implemented. In addition facilities and attractions that encourage people to stay longer need to be developed and introduced across the rights of way network.



Timber Footbridge, Llanfair ar y Bryn

An assessment of future needs must take account of the physical needs of different user groups' across the Public Rights of Way network.

Walkers

All walkers need a network which is easy to use with adequate and clear signing and waymarking where needed. This is especially true in the case of tourists who are often not familiar with the area and rely on the Ordnance Survey Mapping which shows all routes as if they were clear on the ground. They are dissuaded from walking and this reflects on both County and Town & Community Councils. There has been substantial concern over the number of routes that are obstructed by overgrown vegetation, poor furniture, fences and other problems. Detailed discussions within the Local Access Forum have noted that stiles were often not suitable for the elderly or less-able and many preferred gates or kissing gates as they were easier to negotiate.

The value of the Rights of Way network to the everyday needs of the local community has been emphasised both for leisure and other purposes. The important role that a fully open network can make to the tourist industry and its related employment in the County has also been significant. The council receives both compliments and complaints from visitors to the County, the latter generally where expectations on the ground do not match up to anticipated information from Ordnance Survey (OS) maps etc.

According to the WORS 2016/17 survey walking is the most popular countryside activity. Consequently it is important that the needs of walkers are catered for within this emerging Improvement Plan.

Horse Riders

Horse riders have the right to use bridleways, restricted byways and BOATs, giving them access to 6.7% of the County's PRow network. However, this access is not evenly distributed across the County. Equestrian off-road access is particularly lacking, but a network of byways, minor road and bridleways exist in Brechfa Forest amounting to circular rides of more than 20 miles.

The equestrian network is fragmented and links on busy roads or rural roads that are local short cuts make them increasingly dangerous for equestrians to use because of the speed and volume of motorised traffic on them. It is hoped that being recognised as vulnerable road users in the Wales Road Safety Delivery Plan will improve the safety of these links in time as increased traffic volume and development around bridleways identifies a likely increased need for equestrian provision in the future.

Horse riders require local rides but will box to areas further afield or to avoid busy roads. They are probably the most vulnerable users when sharing routes with vehicles due to the unpredictable nature of their mounts. Riders seek historic routes with natural unsealed surfaces that provide spectacular views or links between

communities and countryside access, with minimal gates that are horse friendly and easy to negotiate.

Equestrians improve their own personal health, as well as bringing added economic benefit to Wales by the increased spend as a result of such recreation.

Horse ownership provides and supports work for many in rural areas where local employment is much needed - such as farriers, vets, petrol stations, timber yards, feed merchants, farmers and the livery yards where many of these horses are kept.

The National Equine Database (2012) recorded 34,748 passported horses resident in Wales, 22,000 of these in Carmarthenshire.

Based on the British Equestrian Trade Association's finding that horse owners spend £3,600 annually on their horses this represents an annual investment by horse owners into the economy of £485 million and to Carmarthenshire of £79 million.

Equestrian tourists have to house and feed their horses as well as themselves which doubles spend per night of any other visitor to the county. With a significant number of active riding and pony clubs in the county and venues for equestrian sport, Carmarthenshire attracts equestrian visitors from neighbouring counties and further afield but more could be done to encourage them to stay longer, to access beaches, forestry and open country.

Carriage Drivers

Carriage drivers have legal access to byways and restricted byways. In Carmarthenshire byways are unsuitable for carriages due to the uneven surfaces and the general state of repair so they are not generally used. They also have access to some NRW forestry which includes Crychan Forest which attracts no fees but similar access to Brechfa Forest is chargeable, with no access at Pembrey Forest despite a successful annual event held in Pembrey Park, bringing carriages from some distance away. It is council policy not to allow equestrians to the park unless attending an organised event. Engagement with local groups is required to identify suitable routes for improvement and access to Council owned land.

Carriage driving can give access to the countryside for users who are unable to use it by other means or who are disabled. They are minority users of the PRoW network and it is rare for new access to cater for them. Carriage drivers predominantly use off road areas and minor roads shared with other users.

Cycling

Cycling has long been a popular and low-cost method of transport in Carmarthenshire and this has been accentuated by improvements to routes forming the National Cycle Network, notably in its off-road sections. Overall, 29 million trips

were made during 2011 on the National Cycle Network in Wales, with 85% of users saying that they felt fitter as a result.

At Pwll Pavillion on the Millennium Coastal Path, there have been over 137,000 users in 2017, with 74% cycling and 26% walking. At Pembrey, Canal Waun Sidan, attracted over 48,000 people in 2017, 54% of them cyclists and 46% pedestrians.

Cyclists are entitled to use the same public Rights of Way that are available to horse riders. The Countryside Act 1968 extended rights on bridleways to include cyclists but again within the County the limited available network of Public Rights of Way and problems on some byways have limited opportunities.

Cycling usage is likely to increase outside of the road network and the byways/green lanes could be a useful resource in terms of assisting in meaningful and safe alternatives to busy roads.

Where such a resource offers a key strategic or community link and there are no quiet and safe alternative roads then any such improvements to the byways and green roads should take into account a robust and attractive surface which can be used by all types of cycle alongside the other users. Where quiet and secure highways offer easy access, then surfacing shared byways would be less of an issue and these byways should only be considered passable by mountain bike. It would therefore be beneficial to consider a hierarchy of byways and green lanes to meet the varied needs of users.

Active Travel

There are 10 Active Travel towns across Carmarthenshire. In total 128 Active Travel routes fall on to the Rights of Way Network. Appendix 3 illustrates those Active Travel routes that are on the Rights of Way Network.



Motorised Users

The Department for Environment, Food and Rural Affairs (DEFRA), in its consultation paper on mechanically-propelled vehicles and Public Rights of Way, quote a figure from a user group representative of about 15,000 recreational off-road vehicle drivers active in England and Wales. In consultations for the preparation of this ROWIP a number of responses were received from motorised vehicle users and other interested parties within the County. These responses included ensuring that the ROWIP should recognise the rights of these users / riders /drivers to drive / ride along and use routes that are legally available to them. This reflects the economic importance within the tourism industry that these activities can achieve and that such activities should be encouraged within the Plan.

All motorised users of the PROW network must be fully road legal with driving licenses, road fund licenses and valid MOT's for their vehicles. It is also necessary for CCC to continue to encourage provision of suitable off road custom built facilities, properly insured and safe for riders / drivers to use within the County. These facilities should be made available to both non road legal and road legal users.

In the County the main resource available to off-road recreational motorists are unsurfaced County roads and byways. There have been 5 Traffic Regulation Orders (TRO's) made by the County Council and 3 others are under consideration. TRO's can be used to manage routes where safety concerns arise but will only be used as a last resort when other options have been exhausted.

Canoeists and other Paddlesports

NRW has affirmed that recreational access to water in Wales is within the remit for Local Access Forum and the ROWIP and therefore in contrast to Carmarthenshire's first ROWIP, access to waterways for canoeists and other paddlesports should be recognised and considered in future access management.

Paddlesport is generally recognised as being a positive activity for physical and mental health and general well-being. It also contributes to the economy and has low environmental impact.

According to Canoe Wales information access to waterways is one of the main limiting factors to greater paddlesport participation, limited often due to lack of clarity over legal rights on waterways.

This is a complex issue which the Welsh Government propose to resolve through future legislative reform.

c. Current and Emerging Legislation, Plans and Policies

The ROWIP must take account of the numerous other policy areas and legislative provisions with complementary themes and objectives. Policies and Legislation around Transport, Health, Wellbeing and Conservation, to name only a few, should be taken account of and the revised ROWIP should ultimately work alongside them.

The Policies and Actions contained in the revised ROWIP both compliment and contribute towards the aims and objectives of a number of pieces of both Welsh and UK legislation.

Current and emerging legislation, plans and policies that have been taken account of in the development of the new ROWIP are detailed in appendix 8.



Byway Open to All Traffic, Llanybydder

d. Evaluation of Completeness – Record of Limitations

Welsh Government guidance for the ROWIP review requests that an evaluation is undertaken which assesses the record of limitations and authorised structures on the network and the completeness of that record. This assessment should include the processes in place for their authorisation and is relevant in the Councils existing and ongoing policy of least restrictive access.

In this context a limitation generally refers to a stile or gate on the network which effectively limits the rights of the public. Limitations should be recorded, 'if it is not recorded, the limitation does not exist' (Ridall & Trevelyan 2007) and on that basis should be considered an unauthorised obstruction.

The purpose of the evaluation is to address 3 key functions;

- To inform the public of the local arrangements for the regulation of limitations;
- To provide a picture of current practice across Wales; and
- To provide an opportunity for authorities to consider their procedures and, if necessary, address any issues identified.

The Definitive Statement of Public Rights of Way for Carmarthenshire provides partial information in respect of limitations on the County's Public Rights of Way network.

The current Definitive Statement for Carmarthenshire, prepared under the provisions of the National Parks and Access to the Countryside Act (1949) includes limitations recorded by the Parish Councils and submitted to the Local Authority as part of the original parish survey. The quality of information and level of detail submitted by the Parish Councils during the surveys varied enormously and not all of the limitations and authorised structures recorded were included in the final Definitive Statement. This means that there is some disparity between the recorded limitations held on the Definitive Statement and the situation on the ground but the information recorded provided a good basis for our record of limitations.

Additional information in respect of limitations has been added to the Definitive Statement largely through the Public Path Order and Modification Order processes which have been ongoing since the first publication of Carmarthenshire's first consolidated Definitive Map and Statement. This is an ongoing process which increases the number of accurately recorded limitations contained in Carmarthenshire's Statement on a continuous basis but the document is still far from a complete record.

Carmarthenshire's more complete record of limitations is the data held on the CAMS digital mapping system. Information in respect of structures on the network is regularly inputted and updated and the CAMS system is used as a day to day management tool. Information provided to the public in respect of limitations is often taken from CAMS and, where survey data is sufficiently detailed, can provide a complete picture of the limitations present on the network.

Authorisation of structures/limitations outside of the legal order process is carried out under section 147 of the Highways Act 1980. Landowners and/or managers must make an application to the local Authority to gain permission to erect a new limitation on the network.

The authorisation of structures through this process are not reflected in the Definitive Statement but are held as a permanent record on the individual path file and recorded on the CAMS system.



Llangathen Church

e. Assessment Summary

Taking into account the findings of the assessments that were completed for the purposes of informing the new Carmarthenshire ROWIP, the aims, policies and table of actions contained in section 11 have been developed.

Assessing the delivery of the previous ROWIP gave us our initial findings in terms of what can be achieved during the term of a ten year plan. The review highlighted many valuable indicators to consider when determining the actions and policies for the new ROWIP such as what is realistic in terms of scope, how the availability of funding can affect delivery and how actions should be written in such a way that they may be quantified. The 2007 table of actions and policies was also reviewed with the LAF as a separate exercise which gave a good indication of what had been of value to PROW users and therefore should rollover into the new plan and what new actions and policies should be added to meet likely future needs.

Current and likely future needs were partly assessed by a public consultation exercise. Unfortunately it delivered little in the way of robust data due to low participation in the varied exercises. This conveyed a very narrow perspective on what is valued in terms of public access opportunities and what might be needed in the future. The data could be considered supportive of the actions contained in the new ROWIP but it did little to provide a basis for developing those actions. Data obtained from published sources and professional organisations such as WORS and Canoe Wales gleaned more robust and comprehensive data on current public use of the network and their likely future needs, which has been used to develop the table of actions and agree our aims and policies going forward.

An assessment of Legislation and Policy has revealed the significant level of crossover and commonality between the ROWIP aims and policies and the various Acts, plans and policies currently published or in draft. Common themes such as well-being, sustainable travel, health and conservation appear alongside collaborative working and shared resources. This assessment illustrates the importance of the aims, policies and actions published in the new ROWIP aligning with the requirements of other departments, the Authority as a whole and outside organisations as well as being compliant with the provisions of relevant legislation. The agreed ROWIP policies as well as the numerous partnerships identified in the table of actions should ensure that this is the case.

The evaluation of completeness of Carmarthenshire's record of limitations has identified a notable weakness in the formal recording of limitations and lawful structures on the network. Given the recognised understanding that in the event a structure is not recorded it should not exist on the network, Local Authorities seemingly need to work towards comprehensive record of limitations and structures to effectively assert and protect the public in their enjoyment of the public rights of way network. There is both a policy and an action contained in section 11 that will help improve the process of recording limitations and enforce in cases of unlawful structures.

As already stated earlier in the plan, some of the actions and policies detailed in this plan are aspirational. They have the potential to deliver improvements to public access in Carmarthenshire subject to securing appropriate funding throughout the 10 year term.

11. AIMS, POLICIES & ACTION PLAN

Some of the Action Plan and Policies listed in this section are aspirational. They outline the activities and initiatives identified as valuable to Public Rights of Way and Access and that will be introduced and implemented if the relevant funding can be secured.

In reviewing the Rights of Way network there has been an opportunity to bring together actions and policies specifically concerned with the PRow network, with associated, wider access opportunities. These are included below.

Analysis of the work to date has drawn out a series of themes and aims which form the basis for the ROWIP.

A) AIMS

Aim 1: Ensure that the Rights of Way network is easy to use and enjoyable.

- A. Rights of Way Improvement
- B. Rights of Way Maintenance
- C. Rights of Way Enforcement
- D. Access for All

Aim 2: Provide a reliable, accurate, up to date and widely available digital Definitive Map & Statement.

- A. Maintain progress in updating the Definitive Map
- B. Produce a digital Definitive Map
- C. Pursue Lost Ways claims

Aim 3: Ensure the opportunities for countryside access are easy to use and enjoyable.

- A. Country Parks
- B. Open Country/Open Access Land
- C. Picnic Areas & Nature Reserves
- D. Active Travel Routes
- E. Coast and Forestry

Aim 4: Continue to work in partnership with all relevant, interested parties to achieve improved facilities for Countryside Access.

- A. Promote Partnerships
- B. Volunteers

Aim 5: Promotion – maintain and improve the range and quality of public information on access and PRow, as well as make it more widely available in appropriate formats.

- A. General
- B. Publicity Material

B) POLICIES

POLICY 1	Waymarking along a route will be integral to any Rights of Way improvement scheme, together with priority waymarking on routes identified as difficult to follow by users.
POLICY 2:	<p>Develop prioritised improvement programmes by adopting the appropriate scoring system. Scoring systems will guarantee consistency in prioritisation and should take into account the following criteria as a minimum requirement:</p> <ul style="list-style-type: none">a. Statutory Dutiesb. Health and Safety concernsc. Consideration of Promoted Routesd. Under provisioned user groupse. Funding Deadlinesf. Local Member & Community Council Supportg. LAF Supporth. High levels of public supporti. Consideration of wider County Council objectives
POLICY 3:	There will be a presumption to leave Rights of Way surfaces in their permeable / natural state other than those selected as priority routes for people with limited mobility or where ground conditions make it essential for reasonable access.
POLICY 4:	<p>The Council will work with landowners and land managers to improve access for all by adopting a “least restrictive option” for all amendments to the network and a pro-active approach on improvement to selected routes. This will comprise the order of a gap, gate, then stile, subject to the essential needs for stock management and the liabilities of the landowner for the structures.</p> <p>Managing access will aim to accommodate the management needs of landowners as far as possible whilst maximising accessibility for all, including mobility/visually impaired.</p>

POLICY 5:	<p>Where applications are made for new furniture, there will be a presumption that structures will be kept to a minimum. Permitted structures will comply with Policy 4 above.</p> <ul style="list-style-type: none"> • Structures which are authorised will provide the least restrictive option for users unless there are over-whelming stock management reasons for a less accessible option to be permitted. • On footpaths there will be a presumption in favour of the use of gates. • On bridleways there will be a presumption in favour of bridle gates fitted with bridle latches.
POLICY 6:	Produce an Equestrian Strategy designed to promote and develop an accessible network for equestrian use.
POLICY 7:	<p>Develop prioritised annual maintenance programmes by adopting the appropriate scoring system. Scoring systems will guarantee consistency in prioritisation and should take into account the following criteria as a minimum requirement:</p> <ol style="list-style-type: none"> a. Statutory Duties b. Health and Safety concerns c. Consideration of Promoted Routes d. Under provisioned user groups e. Funding Deadlines f. Local Member & Community Council Support g. LAF Support h. High levels of public support i. Consideration of wider County Council objectives
POLICY 8:	<p>Routes which carry both public and private rights of access - CCC will undertake maintenance of Public Rights of Way according to the demand and needs of the public in accordance with the prioritised matrix.</p> <p>Private rights and/or easements which may exist in conjunction with a Public Right of Way will not be a maintenance consideration.</p>
POLICY 9:	CCC will consider applications from third parties to change the surface of a Right of Way subject to a compatible approach, future maintenance commitments and a review of its impact on other users.

POLICY 10:	CCC will work constructively with Landowners to resolve Public Rights of Way disputes / issues before resulting to legal recourse.
POLICY 11:	Keep CAMS up to date with all enforcement matters reported/surveyed (e.g. obstruction [natural/manmade], missing signs/misleading signs, dangerous livestock/landowners etc.) to be dealt with in line with the Enforcement Protocol.
POLICY 12:	Prosecution will be considered on repeat offences, where the authority is prevented from taking direct action on a Right of Way or where a landowner/occupier fails to apply for a diversion to remedy a particular obstruction.
POLICY 13:	Recover from applicants for temporary closures the full cost of advertising and any other associated costs to the Council.
POLICY 14:	Diversion orders will only be considered by the Council where it is shown to be the most cost effective and practical means of resolving historic / long standing problems on a Public Right of Way. Diverted routes are to be clearly way marked prior to Order coming into force and the cost of Orders to be covered by the landowner if they are the inherent cause.
POLICY 15:	Retain, review and enhance (wherever possible and in agreement with landowners) suitable opportunities, as identified by user groups, for country-side access for those with limited mobility and other impairments.
POLICY 16:	Use approved scoring matrix to define Public Path Order priorities which give consideration to such criteria as H&S, reduced maintenance burden, threat from development, benefit to network, political support and wider Council strategies/policies.

POLICY 17:	Use approved scoring matrix to define Definitive Map Modification Order priorities which give consideration to such criteria as age of application, quality/validity of application, political support, and threat from development and value to network.
POLICY 18:	Applicants will be required to pay for the costs of diversions/extinguishments together with the cost of works required to open the new route.
POLICY 19:	Applications for Town and Country Planning Act (TCPA) Orders should be received, considered and ideally a resolution to make the Order reached before construction commences. TCPA Diversions will only be permitted where it can be proven that a PRow must be diverted to enable the development to be carried out and where an acceptable and comparable alternative route will be provided as far as is possible.
POLICY 20:	Unauthorised construction activity that obstructs a Right of Way will be considered as an obstruction and dealt with under the enforcement policy/protocol.
POLICY 21:	Use of permissive routes will be limited and only progressed where there are substantial short term benefits involving minimal expenditure.
POLICY 22:	Work closely with other divisions within both the Highways and Transportation service and the Leisure service and use joined up working and collaborative planning to better enforce, fund, improve and promote the PRow network.
POLICY 23:	Continue to promote and encourage responsible use of the countryside and respect for those that live and work in the countryside.
POLICY 24:	Actively encourage participation in countryside access from all sections of society using all widely accessible forms of promotion to maximise reach.

C. ACTION PLAN

Actions	Priority H/ M/ L	Estimated Cost per annum	Within available resources (incl. grants)	Target / Date	Lead Body / Partners
AIM 1: ENSURE THAT THE RIGHTS OF WAY NETWORK IS EASY TO USE AND ENJOYABLE					
A. RIGHTS OF WAY IMPROVEMENT					
ACTION 1A: To increase the proportion of PROW that are open, easy to use and well signed by reopening and improving a minimum of 100km p.a (4.6% of network)	High	£150k	No ROWIP funding lost	2022	CCC
ACTION 1B: To increase the proportion of PROW that are open, easy to use and well signed by reopening and improving a minimum of 200km p.a	Low	£300k	No	2029	CCC
ACTION 2: Seek to maintain 2017 Countryside Access budget allocation plus inflation over the 10 year period of this Strategy.	High	£50K	Yes	2029	CCC

Actions	Priority H/ M/ L	Estimated Cost per annum	Within available resources (inc. grants)	Target / Date	Lead Body / Partners
ACTION 3: Ensure that the Wales Coastal Path is maintained to highest possible standard in conjunction with Powys and Ceredigion utilising the Coast Path Officer jointly appointed for the role and utilising WG funding for the purpose. Look to improve appropriate sections to provide access for all.	High	£50k	Yes	2022	CCC WG NRW Powys CC Ceredigion CC
ACTION 4a: Bridleways, Byways & Green Roads (U/C roads) – work with Byway User Group, BHS and other user groups to improve selected highways, byways, bridleways and other suitable access land for equestrian users.	High	£32k	No - £16k awarded for works to Byways and UCR's. No specific Bridleway funding.	2022	CCC BHS User Groups
ACTION 4b: Explore opportunities to develop regional Equestrian Trails and additional equestrian routes within Carmarthenshire as more money is made available.	Med	£15k	No	2025	CCC BHS User Groups
ACTION 5: Rights of Way that could be used to gain recreational access to waterways for canoes and similar waterborne craft should maintained to allow for this purpose.					

AIM 1: ENSURE THAT THE RIGHTS OF WAY NETWORK IS EASY TO USE AND ENJOYABLE

B. RIGHTS OF WAY MAINTENANCE

ACTION 6: Improve performance on signposting to increase use of rights of way "Easy to Use"	High	£12.5k	Yes	2022	CCC User Groups
ACTION 7: Annual Community Maintenance will be prioritised by the Countryside Access team. Town/Community Councils will be approached by the Countryside Access unit requesting that they to exercise their powers of PRow maintenance within their council area.	High	>£50k	No Community Council assistance will increase achievability of this action.	2021	CCC Town & Community Councils Local Access Forum User Groups
ACTION 8: Seek additional maintenance funding to enable a long term, sustainable, high quality access network, in conjunction with neighbouring Welsh authorities.	High	£50k	N/A	2022	CCC, WG PCC, BBNP SCC, NPT, CCC

Actions	Priority H/ M/ L	Estimated Cost per annum	Within available resources (inc. grants)	Target / Date	Lead Body / Partners
ACTION 9: To ensure that all existing promoted Strategic Trails and County Walks are open, available, well maintained, signed and waymarked. Subject all walks and trails to annual review taking account of quality, suitability, popularity and resources available.	High	£10k - £50k	Yes	2022	CCC User Groups
ACTION 10: In conjunction with the Carmarthenshire Byways User Group and other relevant user groups, work to ensure that all Byways & U/C Highways where vehicular rights have been permanently restricted continue to be maintained and are kept open and available for remaining lawful users within resources available.	Med	£10k - £50k	Yes – where possible	2025	CCC BHS
ACTION 11: Continue to work towards a target of 100% open and easy to use network of bridleways in the County.	High	£10k	Yes	2023	CCC BHS User Groups

Actions	Priority H/ M/ L	Estimated Cost per annum	Within available resources (inc. grants)	Target / Date	Lead Body / Partners
ACTION 12: Clearance and improvement of suitable, selected byways/"green roads" in consultation with user groups subject to ongoing funding.	Med	£16k	Yes	2021	CCC User Groups
AIM 1: ENSURE THAT THE RIGHTS OF WAY NETWORK IS EASY TO USE AND ENJOYABLE C. RIGHTS OF WAY ENFORCEMENT					
ACTION 13: Define an Enforcement Protocol for policies/procedures to assert and protect the rights of the public where discussion, negotiation, goodwill and cooperation have failed by 2020.	High	£18k	Yes	2021	CCC
ACTION 14: Use approved scoring matrix to define enforcement priorities such as Health & Safety considerations, to ensure issues are dealt with fairly and in a timely manner in accordance with agreed criteria.	Med	£4k	Yes	2021	CCC

Actions	Priority H/ M/ L	Estimated Cost per annum	Within available resources (inc. grants)	Target / Date	Lead Body / Partners
AIM 1: ENSURE THAT THE RIGHTS OF WAY NETWORK IS EASY TO USE AND ENJOYABLE					
D. ACCESS FOR ALL					
ACTION 15: Adopt the policy of Least Restrictive Access and follow the principles of "By All Reasonable Means" using appropriate advice and guidance to improve the accessibility of all countryside access schemes.	High	£20k	Yes	2029	CCC Partners
ACTION 16: Engage with established relevant advisory groups such as the Carmarthenshire Disability Coalition on opportunities to upgrade the network for people with disabilities and less able users. Also, take active steps to identify and appoint a LAF member to represent the interests and needs of disabled, elderly and less abled users.	Med	£2k	Yes	2024	CCC Local Access Forum
ACTION 17: Develop an Equestrian Policy in line with Policy 6 to promote and develop an accessible network for equestrian use	High	£6k	Yes	2022	CCC, BHS Equestrian User Groups & Businesses

Actions	Priority H/ M/ L	Estimated Cost per annum	Within available resources (inc. grants)	Target / Date	Lead Body / Partners
AIM 2: PROVIDE A RELIABLE, ACCURATE, UP TO DATE AND WIDELY AVAILABLE DEFINITIVE MAP & STATEMENT A. MAINTAIN PROGRESS IN UPDATING THE DEFINITIVE MAP					
ACTION 18: Improve 2007-2017 performance by processing total 40 orders p.a. to Order making stage (to include both Public Path Orders [diversions, creations, extinguishments] & Modification Orders [claims, route anomalies, deletions])	High	£30k	Yes	2023	CCC
ACTION 19: Improve annual Order making performance to 45-50 Orders pa with those Orders being predominantly outstanding DMMO's.	Med	> £50k	No	2021	CCC
ACTION 20: Carry out a review of the appropriate costs to be charged for Orders. Initial review to be completed Nov 2017 with charges to be reviewed every year thereon.	Med	£2k	Yes	2029	CCC

Actions	Priority H/ M/ L	Estimated Cost per annum	Within available resources (inc. grants)	Target / Date	Lead Body / Partners
AIM 2: PROVIDE A RELIABLE, ACCURATE, UP TO DATE AND WIDELY AVAILABLE DEFINITIVE MAP & STATEMENT B. PRODUCE A DIGITAL DEFINITIVE MAP					
Action 21: Continue to work towards 100% audit of digital map of PRow (CAMS) though ongoing continuous review of digital PRow layer.	Med	£15k	Yes	2024	CCC
AIM 2: PROVIDE A RELIABLE, ACCURATE, UP TO DATE AND WIDELY AVAILABLE DEFINITIVE MAP & STATEMENT C. LOST WAYS					
Action 22: Consider evidence received for Modification Orders to add unregistered historic Rights of Way to the Definitive Map and Statement as a matter of priority.	High	£10k	Yes	2026	CCC
AIM 3: ENSURE THAT OPPORTUNITIES FOR OTHER COUNTRYSIDE ACCESS ARE EASY TO USE AND ENJOYABLE A. COUNTRYSIDE PARKS					
Action 23: CCC will continue to promote the Council's Country Parks as facilities for the public to access	High	£2k	Yes	2029	CCC NRW

Actions	Priority H/ M/ L	Estimated Cost per annum	Within available resources (inc. grants)	Target / Date	Lead Body / Partners
AIM 3: ENSURE THAT OPPORTUNITIES FOR OTHER COUNTRYSIDE ACCESS ARE EASY TO USE AND ENJOYABLE					
B. OPEN COUNTRY					
Action 24: To ensure all maintained or improved points of public access to blocks of access land are signed appropriately with the national access symbols.	Low	£1k	Yes	2029	CCC, NRW Local Access Forum User Groups
AIM 3: ENSURE THAT OPPORTUNITIES FOR OTHER COUNTRYSIDE ACCESS ARE EASY TO USE AND ENJOYABLE					
C. PICNIC AREAS & NATURE RESERVES					
Action 25: Maintain existing picnic sites and nature reserves remaining under the care of the local authority / countryside access care team and ensure that robust maintenance arrangements are put in place to ensure all sites remain in good order.	Med	£15k	Yes	2024	CCC Partners

Actions	Priority H/ M/ L	Estimated Cost per annum	Within available resources (inc. grants)	Target / Date	Lead Body / Partners
AIM 3: ENSURE THAT OPPORTUNITIES FOR OTHER COUNTRYSIDE ACCESS ARE EASY TO USE AND ENJOYABLE D. ACTIVE TRAVEL					
ACTION 26: Assist the Transport Strategy & Infrastructure team in developing and maintaining cycleways in accordance with Carmarthenshire Cycle Strategy and the Active Travel Act.	Med	£100k	Yes	2021/2024	CCC, WG Sustrans User Groups Landowners
ACTION 27: Provide regular advice the Transport Strategy and Infrastructure team in schemes being developed under Active Travel and/or the Walking and Cycling Strategy.	Med	£1.5k	Yes	2024	CCC WG Sustrans User Groups

Actions	Priority H/ M/ L	Estimated Cost per annum	Within available resources (inc. grants)	Target / Date	Lead Body / Partners
AIM 3: ENSURE THAT OPPORTUNITIES FOR OTHER COUNTRYSIDE ACCESS ARE EASY TO USE AND ENJOYABLE E. COAST AND FORESTRY					
ACTION 28: Work with partner organisations and relevant stakeholders to maximise access to coast and forestry for as many user groups as possible, making efforts to improve access to all those underrepresented in other areas of the access network.	High	£2k	Yes	2024	CCC, NRW Private Forestry Managers The Crown Estate Private
ACTION 29: Incorporate in publicity which areas of open access forestry and coastline are available to which user groups.	Med	£1k	Yes	2022	CCC NRW

Actions	Priority H/ M/ L	Estimated Cost per annum	Within available resources (inc. grants)	Target / Date	Lead Body / Partners
AIM 4: WORK IN PARTNERSHIP WITH ALL RELEVANT INTERESTED PARTIES TO ACHIEVE IMPROVED FACILITIES FOR COUNTRYSIDE ACCESS A. PROMOTE PARTNERSHIPS					
ACTION 30: Continue to carry out surveys of the access network on a community by community basis in conjunction with local councils and volunteer groups.	Med	£30k	Yes	2024	CCC Town & Community Councils Local Ramblers Community Service
ACTION 31: Continue to promote partnerships with community councils, landowners/occupiers and other public and private organisations, to maximise resources available for improved countryside access.	High	£5k	Yes	2022	CCC, LAF T & C Councils NRW National Trust
ACTION 32: Secure s.106 funding for improvements to Rights of Way and for the development of wider access opportunities for all, to meet the needs generated by new development.	High	£2k	Yes	2024	CCC Developers

Actions	Priority H/ M/ L	Estimated Cost per annum	Within available resources (inc. grants)	Target / Date	Lead Body / Partners
ACTION 33: Continue to work in conjunction with agri-environment schemes to achieve long term improvements and carry out enforcement on the access network.	Med	£10k	Yes	2024	CCC NRW WG
ACTION 34: Continue to work jointly to promote a more sustainable use of the PRow network through links with public transport providers e.g. development of train and/or bus walks.	Med	£4k	Yes	2026	CCC Transport Providers
ACTION 35: Continue to liaise with BHS and other horse riding groups to improve equine provision, maintaining a working knowledge of the NRW-BHS Concordat and working jointly with off road driving organisations such as the TRF and Tread Lightly to identify off road driving opportunities in the County.	High	£4k	Yes	2021	CCC BHS TRF Green Lane Association Treadlightly

Actions	Priority H/ M/ L	Estimated Cost per annum	Within available resources (inc. grants)	Target / Date	Lead Body / Partners
AIM 4: WORK IN PARTNERSHIP TO ACHIEVE IMPROVED FACILITIES FOR COUNTRYSIDE ACCESS B. VOLUNTEERS					
ACTION 36: Maximise use of local organised voluntary groups and volunteers for the preparation for and provision of improvement and maintenance programmes on the PRow network.	High	Up to £50k	Yes	2021	CCC, NRW User Groups Ramblers Keep Wales Tidy Pride in Your Patch
AIM 5 – PROMOTION – MAINTAIN AND IMPROVE THE RANGE AND QUALITY OF PUBLIC INFORMATION, WIDELY AVAILABLE IN APPROPRIATE FORMATS A. GENERAL					
ACTION 37: Work with relevant departments and agencies to improve opportunities for countryside access for people living in areas of deprivation.	Medium	£5k	Yes	2024	CCC Partners

Actions	Priority H/ M/ L	Estimated Cost per annum	Within available resources (inc. grants)	Target / Date	Lead Body / Partners
AIM 5 – PROMOTION – MAINTAIN AND IMPROVE THE RANGE AND QUALITY OF PUBLIC INFORMATION, WIDELY AVAILABLE IN APPROPRIATE FORMATS B. PUBLICITY MATERIAL					
ACTION 38: Provide up to date promotional material for promoted Rights of Way.	High	£3k	Yes	2021	CCC
ACTION 39: Alongside NRW guidebooks and online promotion of the WCP, ensure the information on the CCC website for the Carmarthenshire section of the WCP is up to date and accurate.	High	£2k	Yes	2021	CCC NRW
ACTION 40: Ensure that all promotional material relating to current County Walks are kept up to date by ongoing review.	High	£5k	Yes	2021	CCC

Actions	Priority H/ M/ L	Estimated Cost per annum	Within available resources (inc. grants)	Target / Date	Lead Body / Partners
<p>ACTION 41:</p> <p>Consider creating new County Walks or reintroducing previously promoted walks where a need is identified by local people or user groups and when sufficient resource to create, improve, maintain and promote additional routes is available. In doing so consider the availability of public transport connections.</p>	Low	£20k	No	2029	CCC
<p>ACTION 42:</p> <p>Further improve the County Council website by providing information on countryside access opportunities and for all users, including:</p> <ul style="list-style-type: none"> a. Improved general information for public and landowners. b. Application packs for DMMO's (claims) and PPO's (diversions, extinguishments etc.) c. Online complaints forms d. Online register of DMMO & PPO applications and s31(6) deposits. e. Operational status of PRow network <p>Also, work to improve information relating to the Carmarthenshire LAF by:</p> <ul style="list-style-type: none"> a. Adding more general information b. Publication of meeting minutes c. Providing updates of meetings and venues 	Med	£8k	No	2025	CCC Local Access Forum

Actions	Priority H/ M/ L	Estimated Cost per Annum	Within available resources (incl. grants)	Target / Date	Lead Body / Partners
ACTION 43: Supply regular information regarding improved horse riding, equestrian and tourism opportunities in the County to local BHS representative, Carmarthenshire Riders and other similar groups to be included in their promotional materials. Encourage wide circulation of promotional materials.	High	£2k	Yes	2022	CCC
ACTION 44: Provide information regarding opportunities for those with limited mobility and other impairments to groups such as the Carmarthenshire Disability Coalition to be included in their promotional materials. Encourage wide circulation of promotional materials.	High	£2k	Yes	2022	CCC Partners
ACTION 45: Promote the social, health and economic benefits of walking, riding, and cycling through events activity programmes within country parks, the CCC walking and cycling strategy and forthcoming CCC equestrian strategy.	High	£4k	Yes	2025	CCC

APPENDICES

Appendix 1

ROWIP Consultees

LOCAL MEMBERS (72)

- Cllr. Fozia Akhtar
- Cllr. Sue Allen
- Cllr. Liam Bowen
- Cllr. Kim Broom
- Cllr. Cefin Campbell
- Cllr. Mansel Charles
- Cllr. Deryk Cundy
- Cllr. Suzy Curry
- Cllr. Ann Davies
- Cllr. Glynog Davies
- Cllr. Handel Davies
- Cllr. Ieuan Davies
- Cllr. Joseph Davies
- Cllr. Karen Davies
- Cllr. Sharen Davies
- Cllr. Arwel Davies
- Cllr. Anthony Davies
- Cllr. Emlyn Dole
- Cllr. Jeff Edmunds
- Cllr. Penny Edwards
- Cllr. Colin Evans
- Cllr. Hazel Evans
- Cllr. Linda Evans
- Cllr. Rob Evans
- Cllr. Tyssul Evans
- Cllr. Amanda Fox
- Cllr. Jeanette Gilasbey
- Cllr. Deian Harries
- Cllr. Carl J. Harris
- Cllr. Tina Higgins
- Cllr. Ken Howell
- Cllr. Philip Hughes
- Cllr. Peter Hughes Griffiths
- Cllr. Andrew James
- Cllr. John James
- Cllr. Rob James
- Cllr. David Jenkins
- Cllr. Gareth John
- Cllr. Betsan Jones
- Cllr. Carys Jones
- Cllr. Dot Jones
- Cllr. Gary Jones
- Cllr. Irfon Jones
- Cllr. Jim Jones
- Cllr. Alun Lenny
- Cllr. Jean Lewis
- Cllr. Ken Lloyd
- Cllr. Kevin Madge
- Cllr. Shirley Matthews
- Cllr. Andre McPherson
- Cllr. Eryl Morgan
- Cllr. Shahana Najmi
- Cllr. Dai Nicholas
- Aled Vaughan Owen
- Cllr. Dorian Phillips
- Cllr. Susan Phillips
- Cllr. Darren Price
- Cllr. John Prosser
- Cllr. Louvain Roberts
- Cllr. Emlyn Schiavone

- Cllr. Hugh Shepardson
- Cllr. Alan Speake
- Cllr. Mair Stephens
- Cllr. Bill Thomas
- Cllr. Dai Thomas
- Cllr. Edward Thomas
- Cllr. Gareth Thomas
- Cllr. Gwyneth Thomas
- Cllr. Jane Tremlett
- Cllr. Elwyn Williams
- Cllr. Dorian Williams
- Cllr. Eirwyn Williams

TOWN & COMMUNITY COUNCILS (72)

- Abergwili
- Abernant
- Ammanford Town
- Betws
- Bronwydd
- Carmarthen Town
- Cenarth
- Cilycwm
- Cilymaenllwyd
- Cwmamman Town
- Cynwyl Elfed
- Cynwyl Gaeo
- Dyffryn Cennen
- Eglwys Gymyn
- Gorslas
- Henllan Fallteg

- Kidwelly Town
- Laugharne Town
- Llanarthne
- Llanboidy
- Llanddarog
- Llanddeusant
- Llanddowror and Llanmiloe
- Llandeilo Town
- Llandovery Town
- Landybie
- Landyfaelog
- Llanedi
- Llanegwad
- Llanelli Rural
- Llanelli Town
- Llanfair-ar-y-bryn
- Llanfihangel Aberbythych
- Llanfihangel ar arth
- Llanfihangel Rhos y Corn
- Llanfynydd
- Llangadog
- Llangain
- Llangathen
- Llangeler
- Llangennech
- Llangunnor
- Llangyndeyrn
- Llangynin
- Llangynog
- Llanllawddog
- Llanllwni
- Llannon

- Llanpumsaint
- Llansadwrn
- Llansawel
- Llansteffan & Llanybri
- Llanwinio
- Llanwrda
- Llanybydder
- Llanycrwys
- Manordeilo & Salem
- Meidrim
- Myddfai
- Newcastle Emlyn Town
- Newchurch & Merthyr
- Pembrey & Burry Port Town
- Pencarreg
- Pendine
- Pontyberem
- Cwarter Bach
- St Clears Town
- St Ishmael
- Talley
- Tre-lech a'r Betws
- Trimsaran
- Whitland

MEMBERS OF PARLIAMENT (3)

- Jonathan Edwards MP
- Nia Griffith MP
- Simon Hart MP

ASSEMBLY MEMBERS (3)

- Adam Price AM
- Angela Burns AM
- Lee Waters AM

NEIGHBOURING LOCAL AUTHORITIES/NATIONAL PARK AUTHORITIES (7)

- Brecon Beacons NPA
- Ceredigion County Council
- Neath Port Talbot County
Borough Council
- Pembrokeshire Coast National
Park Authority (NPA)
- Pembrokeshire County Council
- Powys County Council
- Swansea Council

LOCAL ACCESS FORUMS (7)

- Carmarthenshire Local Access
Forum - Members, Observers
and Advisors
- Brecon Beacons NPA
- Ceredigion
- Neath Port Talbot
- Pembrokeshire/Pembrokeshire
Coast NPA
- Powys
- Swansea

CARMARTHENSHIRE COUNTY COUNCIL SERVICES (8)

- CCC Highways
- CCC Planning/Conservation
- CCC Transport Strategy & Infrastructure
- CCC Tourism
- CCC Passenger Transport
- CCC Media & Marketing
- CCC Education & Childrens Services
- CCC Pride In Your Patch

ORGANISATIONS, CLUBS, ACCESS INTEREST GROUPS & DISABILITY INTEREST GROUPS (67)

- All Wales Ethnic Minority Association
- Association of National Park Authorities Wales
- Autism Cymru
- Auto Cycle Union (ACU)
- Beacons Riding Club
- BHS Local Representative
- Brechfa Riding Club
- British Driving Society (BDS)
- British Horse Society (BHS)
- British Motorcyclists Federation (BMF)

- Byways & Bridleways Trust (BBT)
- CADW
- Cambrian Caving Council
- Canoe Wales
- Carmarthenshire Riders
- Carmarthenshire Tourist Association
- Country Landowners Association
- County Surveyors Society – Wales Committee
- Cwmamman Riding Club
- Cyclists' Touring Club (CTC)
- Demetia Services
- Depression Alliance
- Disability Wales
- Duke of Edinbrough
- Equal Opportunities Commission Wales
- Farmers Union of Wales
- Farming and Wildlife Advisory Group
- Farming Connect
- Federation of Young Farmers Clubs
- Green Lane Association
- Heart of Wales Forum
- Heart of Wales Line Trail Association
- Keep Wales Tidy
- LARA (Land Access & Recreation Association)

- Law Society in Wales
- Long Distance Walkers Association
- Mental Health Wales
- Menter Bro Dynefwr
- Menter Cwm Gwendraeth
- Mind Cymru
- Mudtrek Mountain Bike Wales
- National Farmers Union
- National Trust
- Natural Resources Wales
- Network Rail
- Open Spaces Society (OSS)
- Ordnance Survey
- Ramblers Association
- Red Rock Forestry
- Royal Institute for the Blind
- Royal Institute for the Protection of Birds (RSPB)
- Royal Institute of Chartered Surveyors (RICS)
- Sports Council for Wales
- Sustrans Cymru
- Tenant Farmers Association
- The Pony Club UK
- Tir Coed
- Towy Valley Riding Club
- Trail Riders Fellowship
- UPM Tillhill
- Visit Wales
- Wales Council for the Deaf
- Wales Scouts Council
- Wales Trekking and Riding Association
- Welsh Orienteering Association
- Welsh Trail Riders Association
- Woodland Trust

ONLINE

- CCC Website
- Facebook
- Twitter

LOCAL NEWSPAPERS

- Carmarthen Journal
- Evening Post
- Llanelli Star
- South Wales Guardian

Appendix 2

The Definitive Map of Public Rights of Way

All Public Rights of Way in Carmarthenshire – footpaths, bridleways and byways are recorded on the Definitive Map and Definitive Statement. If a way is shown on the map then it is conclusive evidence of Public Rights along the way unless there has been a legally authorised amendment. However, the fact that a way is not shown on the map is not proof that the public has no rights over it and thus, the map may be subject to change.

Carmarthenshire County Council has a statutory duty, under the Wildlife & Countryside Act 1981, to keep the map up to date. The Council also has a duty to investigate any application to add or delete Rights of Way or to change their status – either by upgrading or downgrading.

The Definitive Map is accompanied by the Definitive Statement. This is a description which may contain more information about individual paths, such as the start and end points, width of the way, etc.

The Definitive Map is available digitally via the Countryside Access Management System (CAMS). The map usually requires amendments and updating as a result of requests to create, divert or extinguish paths. Development, or the discovery of new historical evidence, may also result in amendments having to be made. A major part of maintaining this document is modifying it by legal order to add previously unrecorded rights of way to the map. However, many routes with Public Rights may be unregistered. This is particularly relevant in respect of “lost ways”.

Legislation has been passed in England which effectively creates a cut-off date of 2026 after which no routes can be considered for addition to the Definitive Map and Statement supported purely by historical information. This is anticipated to also have an impact on Wales if it is implemented, inevitably leading to an increased number of applications as the cut-off date approaches.

The procedure by which these claimed routes can become definitive Rights of Way, and have the same legal status, is by means of a complex and often contentious legal process, known as a Definitive Map Modification Order (DMMO). This is usually dependent on historical documentation and testimony of user evidence. In addition orders may be processed that create divert or extinguish a path or reclassify it, these are known as Legal Events. These orders recognise new paths, extinguish paths, divert paths or change the status of paths. The processes to make these changes include:

- i. Public Path Orders (PPOs) agreed by the landowner, the Unitary Authority and users. These orders are processed under the Highways Act 1980 and Town and Country Planning Act 1990.

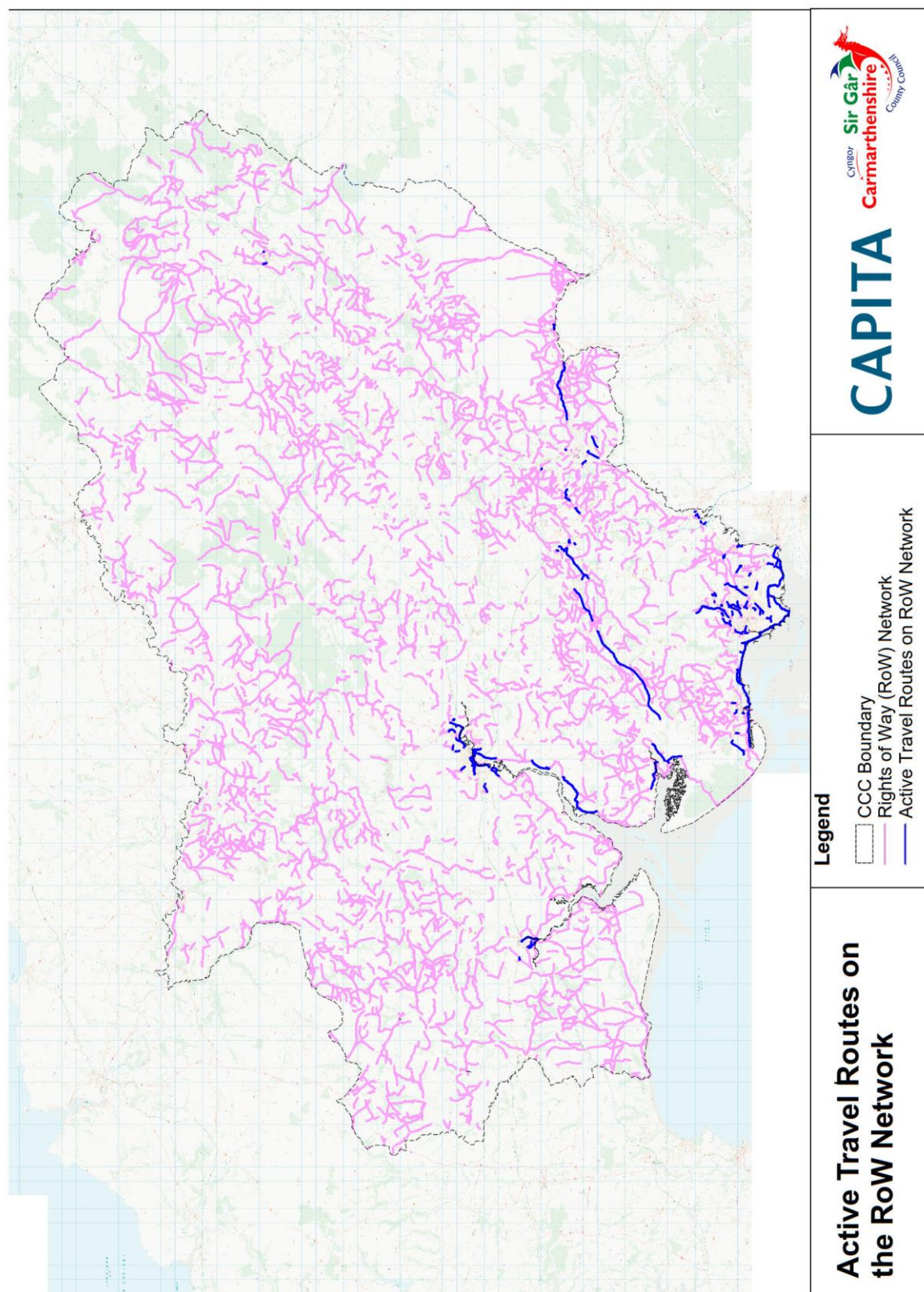
- ii. Definitive Map Modification Orders (DMMOs) confirmed as a result of presumed rights, claims or the discovery of relevant historical evidence. These orders are processed under the Wildlife and Countryside Act 1981.
- iii. Section 116, Highways Act 1980 Power of magistrates' court to authorise stopping up or diversion of highway.

The Definitive Map and Statement is under continual review. Since 2007, the County Council has processed 11 applications to modify the Definitive Map and 108 Public Path Orders. Each successful Public Path Order has been the subject of a Legal Event Modification Order.

While the Definitive Map for the County is perhaps relatively up to date in comparison with some other authorities, there is still a substantial backlog of Orders awaiting processing. The Council receive on average 60 applications per year to change the Definitive Map, with future demand likely to increase. Given available resources, the Council are likely to be able to process a maximum of 40 applications for Orders per year. Because of the historic staffing levels a backlog of applications and in-house promoted Orders has accrued (approx. 148). This backlog will inevitably continue to grow whilst incoming applications and available resources to process them remain at their present levels.

Appendix 3

Active Travel routes of the Rights of Way Network



Appendix 4

Town and Community Councils participating in PRow Maintenance

Town/Community Council	Number / Length of Paths Maintained
Llanelli Town Council	28 paths (all) / 9489m
Llanelli Rural Council	126 paths / 72676m
Llannon Community Council	10 paths / 3916m
Pembrey & Burry Port Town Council	26 paths / 19408m
Llandybie Community Council	142 paths (all) / 91253m
Quarter Bach Community Council	10 paths / 7472m
Carmarthen Town Council	10 paths / 6049m
Laugharne Town Council	4 paths / 3541m
Dyffryn Cennen Community Council	1 path / 265m
Llangeler Community Council	68 paths / 49705m
St Clears Town Council	5 paths / 5036m

Appendix 5

Public Consultation

In accordance with Welsh Government Guidance, published in July 2016, consultation on the Draft ROWIP was held over a 12 week period. A revised draft was produced as a result of comments and observations received in respect of the first draft, this was also subject to a further 12 week consultation.

The aim of the consultation was to reach all appropriate audiences required by the delivery guidance including children/young people and other 'seldom heard' groups, those groups with protected characteristics under the Equalities Act 2010, key stakeholders and delivery partners, all persons that had requested to be consulted and the wider general public.

The scope of activities undertaken also reflected the fact that different types of consultation be made available for different stakeholders. Accordingly, a wide range of activities were employed including face to face engagement and online consultation.

Furthermore, in accordance with the Council's Welsh Language Policy, all documentation and publicity material was bilingual.

The following summarises the activities / publicity efforts that were implemented;

- (i) **Initial Consultation** – In accordance with the guidance an initial consultation exercise was undertaken with the following groups.
- Each local highway authority whose area adjoins their area;
 - Each community council;
 - The National Park authority for a National Park any part of which is within Carmarthenshire County Council;
 - Any Local Access Forum established for their area or any part of it;
 - Natural Resources Wales;
 - Such persons as the National Assembly for Wales may by regulations prescribe in relation to the local highway authority's area; and
 - Such other persons as the local highway authority may consider appropriate.

Communications were dispatched setting out terms of reference, outlining statutory matters supplementary matters along with a timetable outlining the Rights of Way Improvement plan review.

- (ii) **Consultation Document** – a document was prepared by the Council which identified the purpose of the consultation, how comments could be submitted, the actions / policies being consulted upon and information on what happens next.
- (iii) **Questionnaire / Survey** – a series of questionnaires were developed to facilitate the assessment process and guide relevant responses to the Council.
- (iv) **Online** – all documentation, was hosted on the Council's website and the 'Objective' consultation portal respectively for 12 weeks.

The On line Consultation activity was promoted via;

- Facebook,
- Twitter, and
- A series of targeted emails.

Four different questionnaires, targeting four distinct stakeholder groups were posted on line:

- Town and Community Councils,
- Land Owners,
- Organisations, and
- Members of the Public.

- (v) **Correspondence** – correspondence was dispatched to all relevant individuals, stakeholders/delivery partners, organisations and schools describing the purpose of the consultation, identifying where more information could be obtained and how representations could be made.
- (vi) **Press Release / Social Media** – over the duration of the consultation process, press releases along with a series of Tweets and Facebook posts were published via the Council's corporate social media account to promote the consultation.
- (vii) **Utilisation of existing networks** – relevant information was dispatched to all Council staff via the Council's internal communications forums. Furthermore, the Council also made local landowners aware of the consultation through existing networks such as the 'Local Access Forum'.

TOWN AND COMMUNITY COUNCILS

Correspondence was sent to 72 Town and Community Councils inviting them to engage in the consultation process. Three responded to the online survey;

- Llangyndeyrn Town Council,
- Laugharne Township Community Council, and
- Llanddarog Community Council.

The following is a summary of the feedback provided by the Town and Community Councils who responded to the On Line Survey. More detailed responses are available on request.

What are your views on the suitability of the network for each of the following?

	Walkers	Horse Riders	Restricted Mobility	Families	Horse Drawn Carriage	Motorcyclists	4x4 Drivers	Dog Walkers
Excellent	33%	-	-	-	-	-	-	33%
Good	33%	-	-	-	-	-	-	33%
Average	-	-	-	67%	-	33%	33%	-
Poor	-	67%	33%	-	33%	-	-	-
Very Poor	33%	-	33%	33%	-	-	-	33%
No Answer	-	33%	33%		67%	67%	67%	-
	100%	100%	100%	100%	100%	100%	100%	100%

How important do you feel it is that the Rights of Way Network...

	Creates Circular Routes	Avoids Busy Roads	Connects to Public Transport	Improves Accessibility for those with Reduced Mobility	Improves Health & Well Being
Very Important	67%	67%	67%	100%	100%
Somewhat Important	33%	33%	33%	-	-
Somewhat Unimportant	-	-	-	-	-
Not Important At All	-	-	-	-	-
No Answer	-	-	-	-	-
	100%	100%	100%	100%	100%

When asked to identify their priorities for the future of the Network, the Town and Community Councils identified the following 5 issues as their priorities;

Top 5 Priorities for the Future of the Rights of Way Network

1.	General maintenance - opening up and maintaining routes and trails including installing gates and stiles and clearing overgrown vegetation
2.	Waymarking and signage - maintaining and erecting more signs at roadsides and waymarkers along public paths and at entrances to access land
3.	Active travel work - provide paths which link to public transport, places of work, shops and other amenities
4.	School routes - increase links for access to the network by and for schools and their pupils
5.	Practical improvement work - this would focus on making the network more easily accessible for people with mobility difficulties

LAND OWNERS

A total of 17 Land Owners responded to the Land Owners questionnaire that was posted on-line during the 12 week consultation period.

The following is a summary of the feedback provided by Land Owners who responded to the On Line Survey. More detailed responses are available on request.

How would you prioritise the proposed Aims in the Draft Strategy?

	Priority 1	Priority 2	Priority 3	Priority 4	Priority 5	
Ensure the network is easy to use	27%	9%	46%	-	18%	100%
Provide an accurate and up to date Definitive Map	36%	27%	9%	-	27%	100%
Improved Access	9%	27%	18%	18%	27%	100%
Improved Partnership Working	33%	8%	25%	17%	17%	100%
Improved Information Provision	8%	17%	8%	33%	33%	100%

Indicate your level of satisfaction with the following:

	Provision of Furniture	Waymarking	Surface Clearance	Definitive Map	Countryside Access Service
Very Satisfied	8%	8%	17%	17%	-
Satisfied	33%	17%	25%	17%	25%
Dissatisfied	17%	33%	17%	33%	17%
Very Dissatisfied	17%	25%	16%	8%	25%
No Answer	25%	17%	25%	25%	33%
	100%	100%	100%	100%	100%

ORGANISATIONS

A total of 6 organisations responded to the organisations questionnaire that was posted on-line during the 12 week consultation period;

- Dinefwr Ramblers (Ramblers Association);
- Llanpumsaint Walkers are Welcome;
- Clwb Cerdded Llanpumsaint Walking Club;
- Llwybrau Bro Cader;
- Walking Well, St. Clears, and
- West Wales Animal Aid.

The following is a summary of the feedback provided by the Organisations who responded to the On Line Survey. More detailed responses are available on request.

Where do your members get information on the Rights of Way Network? (respondents had the opportunity to select more than one option)

	Responses
Ordnance Survey maps	6
A local library	1
Carmarthenshire County Council Website	4
Other website	4
A guidebook or leaflet	3
Local knowledge	4
A club or association e.g. Ramblers, fishing club	2
A friend or family member	2
A local hotel / guesthouse / B&B	0
The Rights of Way team in Carmarthenshire	4

What discourages your members from using the Rights of Way Network? (respondents could select more than one option)

	Tick All That Apply
I don't know where the routes are	5
The routes don't go where I want to go	5
The paths I use can be obstructed sometimes	3
The condition/surface of the path can be an issue	1
I don't like crossing someone else's land or walking through a farmyard	1
I feel intimidated	1
I don't want to get caught in bad weather conditions	1
I'm worried about getting lost	1
There is a lack of organised walks	0
I have concerns over my safety	0
There are too many stiles to negotiate for me to enjoy using the network	0
There is a lack of public transport to get me to a right of way	0
Other Rights of Way users	0

How satisfied are you with the Rights of Way Section in respect of the following;

	Standard of Furniture	Signage & Waymarking	Improvement Work	Promotion	Surfaces	Maintenance of Definitive Route Map
Very Satisfied	-	-	-	-	20%	-
Satisfied	80%	33%	67%	17%	40%	50%
Dissatisfied	20%	17%		33%	20%	33%
Very Dissatisfied	-	50%	33%	-	20%	-
No Opinion	-	-	-	50%	-	17%
	100%	100%	100%	100%	100%	100%

What discourages you from using the Rights of Way Network? (respondents had the opportunity to select more than one option)

	Responses
Signage and waymarking (poor or missing)	30
Vegetation (surface or overhanging growth)	22
Ploughing / crops	15
Surface condition/drainage issues	13
Intimidation (from other users or landowners)	7
Stiles or gates (in a poor state or inappropriate for user)	7
Missing bridge	7
Obstructions or barriers (any obstacle preventing access)	6
Obstructions or barriers (any obstacle preventing access)	5
Inaccurate information (path not as per Definitive Map or on a leaflet)	5
Animals (dogs not on leads or farm animals preventing access)	2
Something else	2

Where do you get information on the Rights of Way Network? (respondents had the opportunity to select more than one option)

	Responses
Ordnance Survey maps	35
A local library	1
Carmarthenshire County Council Website	14
Other website	3
A guidebook or leaflet	14
Local knowledge	24
A club or association e.g. Ramblers, fishing club	11
A friend or family member	7
A local hotel / guesthouse / B&B	1
The Rights of Way team in Carmarthenshire	3

MEMBERS OF THE PUBLIC

A total of 41 members of the public responded to the questionnaire that was posted on-line during the 12 week consultation period. Responses were received from a wide area covering 14 different post codes across the County.

The following is a summary of the feedback provided by members of the public who responded to the On Line Survey. More detailed responses are available on request.

What do you use the Rights of Way Network for and how often do you use it?

	Walking	Running	Horse Riding	Horse Drawn Vehicle	4x4 Driving	Motor Cycling	Dog Walking
Daily	54%	3%	-	-	-	-	42%
Weekly	36%	16%	-	-	-	-	3%
Monthly	10%	9%	4%	-	-	-	7%
Twice Yearly	-	-	4%	-	4%	4%	-
Yearly	-	-	-	-	-	-	-
Never	-	66%	94%	100%	96%	96%	45%
No Answer	-	6%	-	-	-	-	3%
Total	100%	100%	100%	100%	100%	100%	100%

In your opinion how good is provision for the following:

	Walking	Horse Riding	People with reduced mobility	Cyclists	Horse Drawn Carriages	Motorcycling / 4x4 Driving
Excellent	3%	-	-	3%	-	-
Good	21%	3%	-	9%	-	3%
Average	47%	6%	9%	14%	-	6%
Poor	21%	18%	31%	9%	16%	6%
Very Poor	8%	9%	34%	3%	7%	3%
No opinion	-	64%	26%	62%	77%	82%
Total	100%	100%	100%	100%	100%	100%

In your opinion how satisfied are you with the following:

	Standard of Furniture	Signage & Waymarking	Improvement Work	Promotion	Surfaces	Maintenance of Definitive Route Map
Very Satisfied	5%	-	8%	3%	3%	-
Satisfied	57%	39%	40%	21%	59%	28%
Dissatisfied	30%	33%	26%	30%	27%	28%
Very Dissatisfied	8%	28%	8%	20%	8%	16%
No Opinion	-	-	18%	26%	3%	28%
Total	100%	100%	100%	100%	100%	100%

WORKSHOP

Capita, with the Countryside Access Team in attendance, hosted a Workshop on 11th May 2017 to which members of the public were invited to attend. Hosted at Dinefwr Farm House in Llandeilo the workshop was designed to give members of the public the opportunity to engage directly with the Countryside Access staff on the development of the new strategy.

The event was attended by 8 members of the public, 2 of whom represented Llandybie Community Council. In addition a Rights of Way Officer from Brecon Beacons National Park was in attendance.

Discussions during the event focussed on the following 3 task and finish activities;

- Task 1: Review the proposed aims for the new Rights of Way Strategy;
- Task 2: Review the proposed policies and actions for the new ROWIP
- Task 3: Prioritise budget allocations across the network.

During Task 1 delegates were asked to discuss the appropriateness of the proposed Aims.

Task 2 involved delegates reviewing the proposed Rights of Way policies and objectives. Feedback and responses provided by the Group was used refine and improve the proposed objectives.

For the final task, delegates were asked to prioritise budget allocations across a series of different criteria. Individuals were assigned £100 which they could spend on infrastructure on the network.

More detailed responses are available on request.

Summary of ROWIP Consultation Responses

& Implementation

Consultation responses received from the LAF, NRW, Carmarthenshire Riders, Llanddarog Community Council, CCC Planning Conservation, 2 members of Ramblers Assc, 1 member of the public and 21 online comments – anonymous

A total of 130 individual comments made. Many instances of multiple comments/observations made in respect of similar issues/interests, such as:

1. Funding
2. Equestrian Access
3. Disabled Access
4. Digital Mapping

Each comment has been considered initially in terms of its relevance to the ROWIP as a strategic management document. Comments such as '*most footpaths are in poor condition*' and '*PROW network is an important issue*' are quite simplistic observations which we do not intend to incorporate into the plan at this late stage. For the purposes of keeping this summary as concise as possible these sorts of comments have not been detailed further.

Responses which provide constructive input or criticism have been considered in terms of whether they will potentially enhance the final document.

With this in mind, any amendments must also:

1. Be appropriate and within the scope of the ROWIP
2. Be reasonable and align with Local Authority priorities/policies
3. Support Local Authority compliance with relevant legislation
4. Validate the agreed Aims, Actions and Policies contained in the draft ROWIP
5. Not change the draft ROWIP to such an extent that it would require additional committee approval and public consultation.

NRW made 30 comments/recommendations in respect of the draft ROWIP listed below.

- | | |
|--|---|
| 1) Summarising the key findings and conclusions from the assessment stage and then indicating how these issues will be addressed in the Statement of Action would strengthen document. | plan against need for SEA would leave adoption of plan open to challenge in SEA was required. |
| 2) Clarification required early in the plan that the ROWIP excludes BBNP | 4) Clarify status of digital PROW Map - copy of legal paper record. |
| 3) Preparation of ROWIP falls under article 2(a) of SEA directive. Failure to screen | 5) Explain why 2026 cut off will have an impact in Wales. |
| | 6) Mostly NRW does not own large areas of land - manages WG woodland estate. |

- 7) Open Access has not been relaxed (s1(c) Sch 12 CROW 2000) to allow equestrian access as of right. To help public understand NRW management of land statements are being produced. NRW statement on equestrian use available.
- 8) Official launch of WCP 2012 - constantly evolving
- 9) No acknowledgement of ROWIP funding to date (£726,449)
- 10) Reduction in funding should be evidenced
- 11) Should highlight WCP funding continues
- 12) Should be action surrounding a PI target based on table 9.1
- 13) Disjointed presentation of new legislation since last ROWIP
- 14) Area Statements should be referenced - link to emerging theme of reducing health inequalities
- 15) Public needs assessment previously confused with public consultation?
- 16) Concerns surrounding robustness of data, how results are presented, evaluated or taken account of in developing policies/actions.
- 17) Statistical insignificance of user needs response rate.
- 18) issues around data robustness should be acknowledged - response rate/equality of representation
- 19) figures do not align (pg. 35-36)
- 20) Policy 5 - refer back to Gap, Gate, Stile Policy 4 to clarify favoured option.
- 21) Statutory duties not mentioned in Policies 2 and 7, some stat duties ranked lower than non-stat.
- 22) Multi user access opportunities at Brechfa Forest (windfarm), potential links to wider PRoW network.
- 23) Actions 1A & 1B - no NRW funding to go beyond legal liabilities.
- 24) WG funding (Through NRW) for WCP should be reflected in Action 3
- 25) No specific approach from CCC regarding partnership working Actions 26 and 27.
- 26) Actions 29 and 34 - no maint volunteer opportunities with NRW
- 27) Action 37 - WCP guidebooks not produced by NRW
- 28) Action 43 - Lets walk Cymru funding has ceased.
- 29) NRW-BHS Concordat may help progression of ROWIP Actions - currently under review awaiting final sign off.
- 30) With suggested revisions the final document can provide sound basis for future management.

We have a dedicated Partnership, Access and Recreation Officer within NRW to advise us on our ROWIP and comments received largely compliment comments made by other consultees. We have implemented all of the suggestions/requests put forward by NRW with the exception of comments 12, 24 and 25 for the reasons given below.

12) The addition of a PI Target Action

The PI exercise is onerous, we undertake the necessary surveys subject to available resource and intend to continue in this way. Setting a PI target means committing to conducting PI surveys at regular intervals. We do not have a duty to do this presently and we do not wish to voluntarily burden ourselves with the obligation.

24) WG Funding for WCP should be reflected in Action 3

WG are identified as an Action 3 Partner with an estimation of annual costs. We consider this clear acknowledgement of WG contributing towards WCP.

25) No specific approach detailed re: partnership working in Actions 26 & 27

The approach we take to working with partner organisations will differ according to the type of opportunity/organisation/project, a specific approach is unlikely to be the best fit for all partnership working opportunities.

The Carmarthenshire **Local Access Forum** (LAF) ROWIP subcommittee made 17 comments on the draft Plan listed below:

1. Disjointed document, not well structured
2. Statements in respect of LAF involvement ambiguous/not factual.
3. Some of early information and detail before Actions could be appendices to give reader a clearer view of more important issues.
4. ROWIP should be presented as bidding document
5. Emphasis should be on Action Plan
6. Relevant Legislation an appendix?
7. Highlight achievements through the lifespan of the last ROWIP
8. Add up to date PI figures and issue report figures
9. Include staffing levels.
10. Time of reporting should be included where figures are quoted.
11. Should be written in language the public can easily understand (e.g. para 1, pg. 12 - difficult to read)
12. Recent Ministers Statement should be taken into account.
13. Completion dates for aims/actions not achievable.
14. Access to water information needs to be strengthened.
15. 32 actions with high priority but no associated measurable targets - should be 3/4 measurable key actions
16. Equestrian Strategy needs to be an aim with a specific target.
17. Section 5 inadequate - doesn't flow/isn't clear.

We met with the LAF and went through each comment with members. We discussed each point and provided an explanation of the Authority's decision in respect of making the suggested changes to the final Plan. During this meeting we took account of members' views, specifically in respect of comment 2 which required clarification, and following the meeting we implemented all of the LAF's suggestions/comments with the exception of comments 4 and 12.

4) ROWIP should be presented as bidding document

The ROWIP is a multifunctional document as is presented as such. It provides information, it serves as a management tool and the actions it contains would inform and support future bids for funding as they include CCC's aspirations for the network if funding were available.

12) Recent Ministers Statement should be taken into account.

Draft ROWIP significantly pre-dates minister's statement. The Statement only outlines intentions, nothing to indicate how or when changes might be implemented therefore detail in statement insufficient for inclusion in ROWIP. Nature of changes proposed will discredit a significant proportion of the document if they are implemented.

Excluding NRW and LAF responses outlined above, the remaining 84 consultation responses have been grouped into 14 main headings in the table below with the remaining standalone responses included at the bottom of the table.

Each response/group of responses has an explanatory note alongside, this demonstrates our consideration of the point raised and provides validation of our decision to amend the draft ROWIP or not.

Response	LA Comments	Amendments to Draft ROWIP?
Statutory Duties Insufficient reference, some stat duties ranked lower than non-stat in actions table.	Brief review required to ensure Action priority reflects any statutory duty.	Yes
Funding: Should be better evidenced and acknowledged. Use detail to evidence future funding need. Actions need to be supported by funding. Success of ROWIP dependant on funding. Budget constraints seek to delegate to volunteers. Use of people on community Orders/offenders? Budget for actions too low. No reference to likely future constraints. Comm Councils open to discussions around implementing maintenance.	External funding received should be acknowledged, this is a reasonable expectation. Details of funding reductions needed to support statements made within maintenance chapter. Use of volunteers/comm councils is an approach within existing Actions and has a direct impact of funding requirements so some cross referencing required. Document is, in part, aspirational and therefore actions which fall outside of available resource are what we will strive towards. Nobody knows what future budgets will be, document identifies needs, will serve as a bidding tool if budgets are insufficient.	Yes
Formatting Disjointed presentation. Too Long, doesn't flow. Place more of content in appendix. Lacks clear statement of action.	Poor formatting not fundamental to the content but review of format may be beneficial to the quality and readability of final ROWIP. Statement of Action can be reviewed to ensure clarity.	Yes
Data Statistical significance, robustness, accuracy, referencing, some figures do not align	With a poor response rate to the assessments the data lost some significance, we therefore utilised existing data and knowledge of LAF membership to inform our policies and actions. Figures within the document require review to correct anomalous results.	Yes
Equestrian Access Importance of provision, lack of provision, lack of inclusion, possible opportunities, unregistered routes, BHS Concordat, Equestrian Strategy action, assessment of future needs, engagement with equestrians, more multi user routes needed, clarification of equestrian use of Access Land.	Multi-user Open Access to NRW managed Forestry requires clarification - not as of right under the CROW Act. Reference to the BHS-NRW Concordat can highlight access opportunities for equestrians in the County, incorporate into Action 41. Majority of other points raised relate to lack of access opportunities across the County for which the Equestrian Strategy has been identified as a Policy and we will add an associated action to support the policy. Suggestions of future needs assessment taken on board for implementation as part of the	Yes

	strategy.	
Previous ROWIP Needs to be better assessed, include key findings, successes, failures, and link with actions.	More should be made of what we achieved during the life of the old plan. How much was achieved, where we failed to deliver and why. Aligning this with the external ROWIP funding would support future bidding applications	Yes
Ministers Statement Should be referenced, taken account of. Concerns about horses using footpaths. No proposals to legislate against motor vehicles or impose speed limits. Blanket re-classification of footpaths to higher status requires important considerations and consultation	Draft ROWIP significantly pre-dates Ministers statement. Statement only outlines intentions, nothing to indicate how or when changes might be implemented. Not relevant to the strategic management of public access under current legislation.	No
Staff Changing staff levels, staff vs funding, staff vs issues. Success of ROWIP dependant on staff.	Staffing is an operational consideration determined as part of the wider departmental structure. It is not appropriate for inclusion in the ROWIP	No
Performance Indicators Add target as an action, results require update	Results can be updated for 2018, no PI carried out in 2019. See response to NRW suggestion above in respect of PI target as an Action.	Update results - Yes PI Target - No
Disabled Users Needs wider appreciation, not all in wheelchairs, policies detrimental to mobility/visually impaired, policies make action for all impossible. Unnecessary steps within developments to detriment of less abled.	Content within main body of document to be reviewed to ensure there is support for Actions. Our actions which commit to least restrictive access across the network and to upgrade suitable routes specifically for enhanced access for the less able illustrates our commitment to ensuring the PROW network continues to become increasingly accessible to all. Appreciation of all forms of disability supported by commitment to collaborate with and seek advice from various disability groups alongside trying to appoint a suitable LAF member as a disability representative and advisor.	Review main document Yes Change Actions No
Landowners Engagement necessary to ensure compliance and meeting responsibilities, make sure access doesn't cause conflict with landowner activities.	Developing good relationships with landowners is always a challenge and with the need for budget efficiencies more landowner responsibilities might have to be enforced. More content around landowner responsibility and collaborative working to be considered.	Yes
Operational Status Online info on accessibility should be on i-local, publicising closed/obstructed routes would be useful	Would be a very useful addition to the online service, significant resource required to analyse condition of whole network and develop technology/software to support service. Action 40 to improve website and online information encompasses this aspiration.	No
2026 Cut-Off Relevance in Wales? Local interest groups	2026 has limited relevance in Wales, no indication that it is likely to be implemented. Minor expansion of 2026 para to explain why it has the potential to	Yes

should be engaged before 2026	increase work volume even when it is not in force.	
Digital Maps Digital Map should be Definitive, updates to digital mapping should be prompt, software should be widely compatible, legal status of Digital mapping should be clarified. Open Access Land should be added.	A short para required to clarify the legal record vs the digital map. Other online/digital mapping suggestions similar to Operational Status idea, significant resource and specialised knowledge required to develop various ideas. All relevant for better strategic management possibilities in the future, all encompassed by Actions 19 and 40	Clarification of Legal Record Yes Additional Digital Mapping Actions No
Statistical baseline required to allow for assessments to highlight ROWIP achievements through life of plan.	This is a valid suggestion for the Delivery Plan and will be taken into consideration when that is developed.	No
Differing length of network between two ROWIPs should be explained	The PROW network is continuously changing as a result of mapping changes, as explained in section 4. Technical reasons for the differences found are insignificant given the scale of the network and providing an explanation would introduce unnecessarily complicated detail that is not needed when developing a strategic approach to access management	No
More details on cycle paths - status investment and improvements	Providing more details around Active Travel routes, Safe Routes, Shared Use paths will be helpful to readers. Detailing future developments, their purpose, and longer term aspirations will also be useful in terms of how they align with the ROWIP, need to mindful of duplicating Cycling Strategy.	Yes
More detail needed in section 6 – named locations, information on coastal access away from WCP.	Information regarding who can access the coast/beach/foreshore is minimal, additional information would be useful to public. Access to Water information will be added in accordance with Canoe Wales correspondence. Need to mindful of scope of document, not to drill down to level of specifics that takes away from overall strategic management ideals.	Yes
No Enforcement Policy at present, can this be included in Delivery plan?	Action 12 within draft ROWIP is to develop an Enforcement Protocol.	No
Clearer aims and objectives to highlight how improvements will be made	Existing draft Aims, Policies and Actions developed in conjunction with LAF, level of detail considered sufficient	No
Explanation of Limitations needed, link to Least Restrictive Access	Also a LAF comment, to be discussed.	
Top 5 priorities for RoW Network don't align with 5 main aims of ROWIP - conflicting?	Top 5 priorities according to Comm & Town Councils. Other contributing factors to 5 main Aims, this	Yes

	should be explained further.	
3, 4 & 5 in top 5 priorities need reconsideration in order to take account of wider access provision - improvements for all non-motorised users	5 priorities clearly introduced as those identified by T & C Councils, not necessarily the Local Authority view.	No
Work should be concentrated around population centres and tourist destinations. Same for signposting.	Priority is awarded to our County Walks which originate from towns and villages and other promoted routes which are centred on tourist destinations such as the Heart of Wales Line via a scoring matrix. Actions already in the ROWIP acknowledge priority scoring system as a means to allocate maintenance, signposting and improvement works so suggestion already implemented.	No
ROWIP should encourage people to take litter home	Something that has not been raised previously, a very current issue, complemented by our recent work with 'Pride in your Patch' volunteers that could be incorporated	Yes
New Agricultural Policy an opportunity to improve public access.	A suggestion that is beyond the scope of the ROWIP. Something that has been discussed at all Wales PROW Management meetings.	No
No money should be spent on altering vehicular access on PROW, would lead to further environmental damage and risk to people.	Nothing in draft to suggest specific spend on altering vehicular rights, only maintenance and enhancement of what already exists. However, a commitment to not spend on alterations to vehicular rights is not appropriate as we are subject to a stat duty if applications are received which incorporate amendments to vehicular access in some way.	No
Aims should be mindful of Active Travel, join up network for commuting.	Specific obligations under Active Travel Act met by Strategic Transport team, consideration of Active Travel Act is already included in the document.	No
Provide promoted routes that link with public transport.	Good suggestion, supports sustainable transport/active travel agendas. Possible expansion of action 39 to include consideration of public transport connections	Yes
Policy to include destination on signage	Very expensive to implement and maintain at a time when budgets are stretched.	No
Needs to be PROW policy in LDP not just cross referencing. Network should be protected within developments to ensure routes do not become corridors inviting antisocial behaviour.	ROWIP should take account of LDP and vice versa, key points should be included in either document rather than the inclusion of full details. LDP Review should be mentioned.	Yes
Include further information regarding habitats within Geography and Demographics chapter and mention habitats under maintenance to demonstrate understanding of Environment Act.	Suggested text provided to enhance document in terms of compliance with the LA duties under the Environment Act.	Yes

Adjust section 11 to correctly reflect LA Env Act duties with reference to the Forward Plan.	Suggested text provided to show understanding of the Env Act and associated forward plan.	Yes
--	---	-----

The changes that have been made to the draft document as a result of the consultation exercise, although numerous, have not significantly changed the plan or the Policies and Actions coming out of it, only strengthened or clarified them.

Re-formatting the plan has hopefully resulted in a more useable and user friendly public facing document.

Appendix 6

How this Improvement Plan address the key challenges Identified in the Welsh Outdoor Recreation Survey (WORS)

WORS Key Challenges	CCC ROWIP RESPONSE TO KEY CHALLENGES
<p>Challenge 1: Increasing frequent participation.</p> <p>The survey has found that frequent participation has declined. Although we know that this is associated with the corresponding decrease in 'doorstep' visits, we need to do further work to understand why this is happening. This will help inform action to increase frequent participation in the future.</p>	<p>Aim 1: Ensure that the Network is easy to use and accessible.</p> <p>By promoting and developing accessibility CCC will ensure that as many people living, working and visiting Carmarthenshire have the opportunity to access the Countryside.</p>
<p>Challenge 2: Supporting older people</p> <p>Age has been shown to be one of the key determinants of participation in outdoor recreation, which when combined with an increasingly aging population, highlights the need for more focus on older people.</p> <p>Understanding their activities, preferences, and barriers will help inform more targeted interventions to support and encourage participation.</p>	<p>Action 15:</p> <p>Engage with established advisory groups such as the Carmarthenshire Disability Coalition and relevant organisations on opportunities to upgrade the network for people with disabilities and other less able users. Also, take active steps to identify and appoint a LAF member to represent the interests and needs of disabled, elderly and less abled users.</p> <p>Action 15 of the ROWIP is specifically designed to improve access for those with reduced mobility, including the elderly.</p>
<p>Challenge 3: Supporting women with children</p> <p>'Life-stages' are a key factor in participation, and the survey has found that women with children are an important group. With distinct motivations, levels of physical activity, and challenges, there is a need to consider their outdoor recreation needs to improve opportunities and increase active participation.</p>	<p>Action 14:</p> <p>Adopt the policy of Least Restrictive Access and follow the principles of "By All Reasonable Means" using appropriate advice and guidance to improve the accessibility of all countryside access schemes.</p> <p>By recognising that different users groups, have different motivations and challenges, Action 14</p>

	promotes Least Restrictive Access in an attempt to make the Network as accessible as possible.
<p>Challenge 4: Flexible provision for different activities The survey has found that over the years participation in different activities has both increased and decreased. Change in activity preferences is often relatively unpredictable, and can shift rapidly. This highlights the need for recreation provision to be flexible, and where possible to accommodate a diversity of activities on the doorstep.</p>	<p>Aim 3: Ensure the opportunities for countryside access are easy to use and enjoyable.</p> <p>Aim 3 is designed to ensure that access is provided across a range of different activities and uses, so that flexible provision, capable of responding to changing trends is provided across the County.</p>
<p>Challenge 5: Balancing health and economic benefits Outdoor recreation provides benefits for both health and the economy. Health benefits are particularly associated with frequent participation in doorstep activities, whilst economic benefits are derived more from days out to the best of Wales' iconic coast and mountains. A key challenge is to find the right balance of support for both of these different types of recreation.</p>	<p>Action 40:</p> <p>Promote the social, health and economic benefits of walking, riding, and cycling through events and programmes such as the 'Lets walk Cymru' Scheme, associated Walk Well Carmarthenshire groups, activity programmes within country parks, the CCC walking and cycling strategy and forthcoming CCC equestrian strategy.</p>
<p>Challenge 6: Using outdoor recreation to increase pro-environmental attitudes and behaviours For the first time, the survey has shown that participation in outdoor recreation is linked to attitudes and behaviours that are related to caring for the environment. More work is needed to understand this connection, and to improve future communications to increase awareness and encourage behaviour that supports the environment.</p>	<p>Aim 4: Continue to work in partnership with all relevant, interested parties to achieve improved facilities for the Countryside</p> <p>Aim 5: Maintain and improve the range and quality of public information and make it more widely available in appropriate formats</p> <p>This Aim is designed to work with volunteers and interested parties to promote and care for the natural environment and engage community groups at a local level.</p> <p>In addition Aim 5 is designed to improve future communications and to increase awareness of behaviour that supports the environment.</p>

Appendix 7

2007-2017 ROWIP REVIEW OF ACTIONS & POLICIES

2007 – 2017 RIGHTS OF WAY IMPROVEMENT PLAN PROGRESS REVIEW	
AIM 1: ENSURE THAT THE RIGHTS OF WAY NETWORK IS EASY TO USE AND ENJOYABLE	
A. RIGHTS OF WAY IMPROVEMENT	
ROWIP ACTION/POLICY	DELIVERED?
ACTION 1A: To increase the proportion of PROW that are open, easy to use and well signed by reopening and improving a minimum of 150km p.a. (7% of network).	78.4% of action achieved with varying Countryside Access staffing levels over 10 year period
ACTION 1B: To increase the proportion of PROW that are open, easy to use and well signed by reopening and improving a minimum of 300km p. a. (14% of network).	No
ACTION 2: Seek to maintain an average capital budget allocation of £225k pa for Access network improvements by continued bids to the Capital Programme.	No
ACTION 3: To complete the Carmarthen Coast Trail and improve appropriate sections for all users as a part of the WAG Coastal Access Improvement Programme for an All-Wales Coastal Path.	Wales Coast Path Complete
ACTION 4: Bridleways, Byways & Green Roads (U/C roads) – work with BHS and other user groups to achieve a programme of regional Horse Trails/equestrian routes on selected highways, byways, bridleways and other suitable access land.	Since 2007 in excess of 40 Bridleways, and 26 BOATs/Unclassified Roads have been opened up. Roads have been opened up. In completing these works close working relationships have been developed with the local BHS representative, Carmarthenshire Riders, Tread Lightly and CCC Highways to prioritise routes and fund works. Cothi Trail (a multi user route) was developed in partnership with the NT and NRW.
ACTION 5: Waymarking along a route will be integral to any rights of way improvement scheme, together with priority waymarking on routes identified as difficult to follow by users.	Ongoing
POLICY 1: In consultation with Town & Community Councils, user	

<p>groups and others, base improvement programmes on priority routes which:</p> <ul style="list-style-type: none"> a. Reduce any danger to the public. b. Provide strategic links and opportunities for promoted routes to benefit the economy of the County. c. Complement the existing set of County Walks and Trails. d. Benefit most users (actual or potential) based on levels of use of the right of way. e. Provide cost- effective use of resources. f. Benefit where possible those with limited mobility. g. Integrate with public transport provision. <p>Provide access to Open Country and urban commons.</p>	<p>Scoring matrices have been developed based on Policy 1 criteria (a-f), taking into account the views of Community Councils, Local Elected Members and the Carmarthenshire LAF.</p>
<p>POLICY 2:</p> <ul style="list-style-type: none"> h. There will be a presumption to leave rights of way surfaces in their natural state other than those selected as priority routes for people with limited mobility or where ground conditions make it essential for reasonable access. 	<p>Ongoing</p>
<p>POLICY 3:</p> <p>The Council will work with landowners and land managers to improve access for all by adopting a “least restrictive option” for all amendments to the network and a pro-active approach on improvement to selected routes. This will comprise the order of a gap, gate, then stile, subject to the essential needs for stock management and the liabilities of the landowner for the structures.</p>	<p>Ongoing</p>
<p>POLICY 4:</p> <p>Where applications are made for new furniture, there will be a presumption that structures will be kept to a minimum. On footpaths there will be a presumption in favour of use of gates, unless there are over-whelming stock management reasons for stiles to be permitted.</p>	<p>Ongoing</p>
<p align="center">2007 – 2017 RIGHTS OF WAY IMPROVEMENT PLAN PROGRESS REVIEW</p> <p align="center">AIM 1: ENSURE THAT THE RIGHTS OF WAY NETWORK IS EASY TO USE AND ENJOYABLE</p> <p align="center">B. RIGHTS OF WAY MAINTENANCE</p>	
<p>ACTION 6A:</p> <p>Improve performance on signposting to raise % of rights of way “Easy to Use”</p>	<p>Signposting performance improved by 63.%, process ongoing</p>

ACTION 6B: Enhanced programme of signposting to speed up and extend baseline programme.	No
ACTION 7: Encourage Town & Community Councils to cover maintenance of routes in their area on a priority basis, with grant assistance from CCC.	<u>2007-2010</u> Approx. 20 Community Councils undertook their own maintenance with the Rangers Service undertaking the remainder. <u>2010 onwards</u> Maintenance taken back from Comm CIs to be undertaken by Rangers Service (4 new Rangers recruited in preparation for change). 67 Community Council areas maintained by Rangers Service with larger Urban Comm CIs. (x5) retaining delegated maintenance responsibilities.
ACTION 8: Review the Community Programme with Town & Community Councils in order to establish a robust long-term maintenance system.	Community Programme ended 2010, see Action 7 above.
ACTION 9: Seek additional maintenance funding to enable a long term, sustainable, high quality access network, in conjunction with other Welsh authorities.	Coast Path Officer post has been created and funded in conjunction with Powys and Ceredigion CC's
ACTION 10: To ensure that all existing promoted Strategic Trails and County Walks are open and available and well maintained, signed & waymarked.	Routes are prioritised but funding and staff resource has limited standards of maintenance.
ACTION 11: Byways/U/c Highways – work with BHS and other user groups to ensure that all Byways & U/C Highways where vehicular rights have been permanently restricted by legal orders are open and available for use.	Works undertaken in this regard however as part of Action 4 not 11.
ACTION 12: Bridleways – Ensure that all bridleways are open and available for use.	No. of BR's open and easy to use have increased
ACTION 13: To carry out further research into vehicular access to the country-side in the Cambrian Mountains and other potential pressure areas	Cambrian Mtn Project commenced in 2007 looking to identify sustainable vehicular routes across the Cambrian Mountains. (Joint working with Powys & Ceredigion)

	<p>Phase 1 report completed 2012 which mapped 650km of routes identified as suitable for vehicular use. Traffic light system applied to those routes for suitability - 5% classed as sustainable and 1% as legally available vehicular highways at the time.</p> <p>Next stage was to process DMMO applications in respect of the 5% of routes potentially carrying vehicular rights, no applications ever received for Carms. Project ceased 2012.</p>
<p>ACTION 14:</p> <p>Completion of survey on byways/"green roads" to define potential programme for clearance of suitable selected routes in consultation with user groups.</p>	<p>Work completed on selected vehicular routes in consultation with/following requests from user groups. Entire network survey not carried out and maintenance passed back to Highways who programme works.</p>
<p>POLICY 5:</p> <p>In consultation with Town & Community Councils, user groups and others, target annual Community Programme maintenance on priority routes which:</p> <ul style="list-style-type: none"> i. Present a danger to the public. ii. Benefit most users,(actual or potential) based on levels of use of the rights of way.. iii. Provide links in and around towns & villages and promoted routes. iv. Benefit where possible those with limited mobility. v. Form part of a promoted County route. vi. Provide access to Open Country. 	<p>Maintenance has been largely prioritised according to ROWIP policy 5.</p> <p>Access to open country to a lesser extent, higher demand for PROW network away from Open Access land in the County.</p> <p>Scoring matrices have been developed largely based on Policy 5 criteria (i-vi), taking into account the views of Community Councils, Local Elected Members and the Carmarthenshire LAF.</p>
<p>POLICY 6:</p> <p>CCC will maintain rights of way in proportion to the relative public and private use which exists.</p>	<p>Yes, reflected in scoring matrix criteria</p>
<p>POLICY 7:</p> <p>CCC will not consent to third parties changing the surface type of a right of way, unless the new surface is compatible with the public use and liability for future maintenance rests with the third party.</p>	<p>Where unit has been aware of re-surfacing works on PROWs consent has been awarded once specifications have been agreed. Cases of re-surfacing have gone unobserved, highlighting need for better promotion of landowner requirements in this regard.</p> <p>Ongoing liability for maintenance has not been addressed.</p>
<p>2007 – 2017 RIGHTS OF WAY IMPROVEMENT PLAN PROGRESS REVIEW</p>	

AIM 1: ENSURE THAT THE RIGHTS OF WAY NETWORK IS EASY TO USE AND ENJOYABLE	
C. RIGHTS OF WAY ENFORCEMENT	
ACTION 15: Define an Enforcement Protocol for policies/procedures to assert and protect the rights of the public where discussion, negotiation, goodwill and cooperation have failed within a reasonable timescale.	Enforcement has been inconsistent in approach with no definite protocol or policy in place.
POLICY 8: Remedying issues on rights of way will be firmly based on discussion, negotiation, goodwill and cooperation between the Council and landowners with a view to resolving issues amicably.	Yes, an ongoing and successful policy.
POLICY 9: Produce and keep up to date a register of complaints, (e.g. obstruction [natural/manmade], missing signs/misleading signs, dangerous livestock/landowners etc.) to be dealt with in line with the Enforcement Protocol.	Yes, CAMS system used for this purpose, not 100% complete to date but ongoing
POLICY 10: Prosecution will be considered on repeat offences, where the authority is prevented from taking direct action on a right of way or where a landowner/occupier fails to apply for a diversion to remedy a particular obstruction	Yes
POLICY 11: Recover from applicants for temporary closures the full cost of advertising and any other associated costs to the Council.	Yes
POLICY 12: Diversion orders will only be considered by the Council where it is shown to be the most cost effective and practical means of resolving a problem on a right of way. Diverted route to be clearly marked prior to Order coming into force.	Yes

2007 – 2017 RIGHTS OF WAY IMPROVEMENT PLAN PROGRESS REVIEW	
AIM 1: ENSURE THAT THE RIGHTS OF WAY NETWORK IS EASY TO USE AND ENJOYABLE	
D. ACCESS FOR ALL	
ACTION 16: Adopt the policy of Least Restrictive Access and follow the 6 broad principles of “By All Reasonable Means” in all countryside access schemes. (See para. 2.65 above).	Yes, this policy is applied where we have cooperation with landowners.
ACTION 17: Establish an Advisory Group on opportunities to upgrade the network for people with disabilities and other less mobile users.	Discussion has only taken place in this respect through the LAF & Carmarthenshire Disability Coalition.
ACTION 18: Retain, review and enhance (wherever possible and in agreement with landowners) suitable opportunities for country-side access for those with limited mobility and other impairments.	Yes, those routes identified as appropriate for limited mobility access have been enhanced in conjunction with relevant landowners.
2007 – 2017 RIGHTS OF WAY IMPROVEMENT PLAN PROGRESS REVIEW	
AIM 2: PROVIDE A RELIABLE, ACCURATE, UP TO DATE AND WIDELY AVAILABLE DEFINITIVE MAP & STATEMENT	
A. MAINTAIN PROGRESS IN UPDATING THE DEFINITIVE MAP.	
ACTION 19: As a minimum, improve performance 1996-2006 by 50% by processing total 40 orders p.a. to order-making stage (Public Path Orders (PPO's)- diversions, creations, extinguishments & Modification Orders new Def Maps claims/anomalies).	Order output has been inconsistent. Staff changes/reductions has had a severe impact on improvement figure. Average performance 2007-2017 amounts to 15 Orders per annum
ACTION 20: Improve performance to at least 60 orders pa to order-making stage (PPO's – diversions, creations, extinguishments & Modification Orders new Def Maps claims/anomalies).	No
ACTION 21: Carry out a review of the appropriate costs to be charged for orders.	No
POLICY 13: In the making of Public Path Orders, give priority to: <ol style="list-style-type: none"> 1. Anomalies that result in use of the right of way being prevented. 2. Bridleways and byways which connect up existing equestrian networks. 	Public Path Orders (PPO's) have been prioritised according to the 2 criteria named in this policy and additional criteria not outlined such as political pressures/support (WCP), reducing maintenance liabilities, H&S and wider public benefit. Scoring matrix to prioritise PPO's now developed and in

	process of being applied to new PPO applications as well as backlog.
POLICY 14: In the making of Modification Orders, deal with in order of receipt but give priority to: <ul style="list-style-type: none"> a. Claimed routes threatened by development. b. Routes where a Creation Agreement offers a speedier resolution of the issue. c. Bridleways and byways which connect up existing equestrian networks 	Definitive Map Modification Orders (DMMO's) have been prioritised according to the criteria named in this policy and additional criteria not outlined such as quality/validity of application, political pressures/support, value to network and public benefit. Scoring matrix to prioritise DMMO's now developed and in will be applied to new DMMO applications as well as backlog.
POLICY 15: Applicants will be required to pay for the costs of diversions/extinguishments together with the cost of works required to open the new route.	Yes
POLICY 16: TCPAat diversions or stopping up should ideally be confirmed before construction commences, in order to reduce potential problems. Diversions will only be permitted where it can be proven that it must be diverted to enable the devt. to be carried out and where an acceptable alternative route is provided. Stopping up of rights of way will only be allowed in exceptional circumstances.ments together with the cost of works required to open the new route.	Working practices have improved in relation to TCPA Orders with a push towards earlier receipt of Diversion/Stopping Up applications and approval of proposals before construction commences. This does not yet happen in all cases but a large proportion of development sites are compliant with this revised system.
POLICY 17: Any construction site that obstructs a right of way will be considered as an obstruction and dealt with under the enforcement policy/protocol.	No
POLICY 18: Use of permissive routes will be limited and only progressed where there are substantial short term benefits involving minimal expenditure.	Yes

2007 – 2017 RIGHTS OF WAY IMPROVEMENT PLAN PROGRESS REVIEW	
AIM 2: PROVIDE A RELIABLE, ACCURATE, UP TO DATE AND WIDELY AVAILABLE DEFINITIVE MAP & STATEMENT	
B. PRODUCE A DIGITAL DEFINITIVE MAP	
ACTION 22: Accurately digitise 100% of the public rights of way network	Network has been 100% digitised and published online but with a disclaimer as it is not fully audited.
ACTION 23: Make digital version of Def. Map available on website	Digital PRow map published online but not definitive.
2007 – 2017 RIGHTS OF WAY IMPROVEMENT PLAN PROGRESS REVIEW	
AIM 2: PROVIDE A RELIABLE, ACCURATE, UP TO DATE AND WIDELY AVAILABLE DEFINITIVE MAP & STATEMENT	
C. LOST WAYS	
ACTION 24: Carry out pro-active research and consider evidence for claims for Modification Orders for unregistered historic rights of way.	Not pro-active, available staff resource has been concentrated on dealing with DMMO backlog and formal applications.
ACTION 25: Maintain current standards in meeting 95% of search requests within 5 days.	Searches performance reduced to an average of 90.4% due to loss of the Searches Assistant in 2009. Performance has improved in recent years with the average 5 day return figure between March 2015 and March 2017 being 99%
2007 – 2017 RIGHTS OF WAY IMPROVEMENT PLAN PROGRESS REVIEW	
AIM 3 – ENSURE THAT OPPORTUNITIES FOR OTHER COUNTRYSIDE ACCESS ARE EASY TO USE AND ENJOYABLE	
A. COUNTRYSIDE PARKS	
ACTION 26: Pembrey Country Park – implement improvement programme inc. new visitor centre, better catering facilities and extended activities.	Works to improve all facilities commenced 2016
ACTION 27: Gelli Aur Country Park – seek long-term future and improvement programme for the country park in agreement with new owners.	No, Gelli Aur now in private ownership. Owner working with Visit Wales to provide some public access
ACTION 28: Llyn Llech Owain Country Park – completion of improvement programme for walkers, horseriders, and cyclists and associated environmental improvements.	Improved access for all throughout park. Continuing environmental improvements in conjunction with NRW.
ACTION 29: Millennium Coastal Park – maintain/improve opportunities for countryside access & water-based	Access and water based recreation opportunities have been improved, work is ongoing.

recreation.	
Action 30: Mynydd Mawr Woodland Park – small scale improvements to access facilities as opportunities allow.	Improved access for all throughout park. Developed equestrian cross country course and all weather arena. Developed outdoor activity areas such as a climbing wall and a mountain bike course (off road and street). Made environmental improvements such as scrub clearance for Skylarks.
ACTION 31: Gelliwerdd Park (Glanamman) / Allt Nant y Ci (Saron)	Gelliwerdd Park - Improved access for all. Developed off road mountain bike course. Improved interpretation materials on site. Allt Nant y Ci – Improved access for all. Installed Life Trail (outdoor gym) equipment and mountain bike course. Installed bird hide and viewing platform.
2007 – 2017 RIGHTS OF WAY IMPROVEMENT PLAN PROGRESS REVIEW AIM 3 – ENSURE THAT OPPORTUNITIES FOR OTHER COUNTRYSIDE ACCESS ARE EASY TO USE AND ENJOYABLE B. OPEN COUNTRY	
ACTION 32: To ensure that at least one point of public access is available to each block of Access Land/Urban Common	Not an active priority at present
ACTION 33: To ensure that all available and open exits and entrances to blocks of access land are signed with the national access symbols.	Not an active priority at present. Some access waymarking has been undertaken where work has been carried out on PRoWs surrounding open access land. However signing has been minimal as it has been reported to be misleading (especially negative Open Access signage)
POLICY 19: Give priority in maintenance and improvement programmes to ROW that provide opportunities for access to open country. (See Impt. A.3 & Mtce B.4 above).	Not been an active priority.

2007 – 2017 RIGHTS OF WAY IMPROVEMENT PLAN PROGRESS REVIEW	
AIM 3 – ENSURE THAT OPPORTUNITIES FOR OTHER COUNTRYSIDE ACCESS ARE EASY TO USE AND ENJOYABLE	
C. PICNIC AREAS AND NATURE RESERVES	
ACTION 34: Maintain existing picnic areas and nature reserves and consider suitable limited additional facilities.	Ongoing maintenance. Currently discussions taking place surrounding asset transfer of sites to Comm. Councils
2007 – 2017 RIGHTS OF WAY IMPROVEMENT PLAN PROGRESS REVIEW	
AIM 3 – ENSURE THAT OPPORTUNITIES FOR OTHER COUNTRYSIDE ACCESS ARE EASY TO USE AND ENJOYABLE	
D. CYCLING	
ACTION 35: Maintain existing cycleways in the country to meet the needs of cyclists and other users.	<p>CCC Currently makes significant investment in the maintenance of our cycle network, this includes both our off road dedicated paths as well as those well used strategic on highway routes; further we work closely with Sustrans who undertake a maintenance function in terms of sections of National Cycle Network within the County. Our approach to maintenance is being further informed by the route audits undertaken as part of the Active Travel Act Existing Route Map process.</p> <p>In support of the above, an exercise is also being undertaken to assess our existing cycle path assets to ensure consistency and clarity in terms of classification and condition, this will allow us to target our resources effectively where they are most needed.</p>
ACTION 36: Priority to be given to: <ul style="list-style-type: none"> a. Completing the Amman Valley cycleway b. Developing key missing links in the network between Ammanford and Cross Hands; c. Developing key missing links in the network between Nantgaredig & Whitemill in the Tywi Valley. d. Complete the three mountain biking trails in Brechfa and assist in the development of this area as a Centre of Excellence. 	<ul style="list-style-type: none"> a. The majority of the scheme is now complete, and land negotiation with Brynamman RFC and another landowners are being concluded. Anticipated construction in early 2018 to complete the missing link. b. Key missing links in the network between Ammanford and Cross Hands have been outlined in the integrated network maps as potential future developments. The Cross Hands Economic Link Road will also provide routes which tie in with the Active Travel Act. c. Carmarthenshire County Council are currently developing the Tywi Valley Path project which will provide a 3 meter wide shared use path stretching from Abergwili, Carmarthen to Ffairfach, Llandeilo. The section of the path connecting Nantgaredig and Whitemill is due for completion by 2019, while the remainder of the path has a target completion date of 2020. d. The three mountain bike trails in Brechfa have been

	completed. The 18.5km black graded 'Raven Trail' is listed as one of the top MTB cycling tracks in Wales, the 'Derwen Trail' which comprises a 9.2 km green route and 4.7km blue option, and the red graded 'Gorlech Trail', stretching for 19km and designed by Rowan Sorrell. Its rising popularity as a highly rated family day out will no doubt assist Brechfa in achieving the status of a Centre of Excellence, although this aim has not yet been met.
2007 – 2017 RIGHTS OF WAY IMPROVEMENT PLAN PROGRESS REVIEW AIM 4: WORK IN PARTNERSHIP TO ACHIEVE IMPROVED FACILITIES FOR COUNTRYSIDE ACCESS A. PROMOTE PARTNERSHIPS	
ACTION 37: Continue to carry out pro-active surveys of the access network on a community by community basis in conjunction with local councils.	A number of community surveys have been carried out following requests made by the relevant town/community council. This has not been County wide to date.
ACTION 38: Continue to promote partnerships with community councils, landowners/occupiers and other public and private organisations, to maximise resources available for improved countryside access.	We have developed partnerships with a number of comm cls and private and public organisations to pool resources improve countryside access.
ACTION 39: Secure s.106 funding for improvements to Rights of Way and countryside access to meet the needs generated by new development.	We have negotiated for and made use s106 monies in a limited number of cases. We are now becoming actively engaged in the Section 106 Planning Subgroup so that we can make bids for s.106 money and use it to improve networks surrounding a new developments.
ACTION 40: Continue to work with Tir Gofal and similar agri-environment schemes to achieve long term improvement to the access network.	Ongoing collaboration with enforcement officers for current agri-environment schemes to maximise resource available for enforcement.
ACTION 41: Continue to work jointly to promote a more sustainable use of the network through links with public transport providers e.g. train walks, bus walks.	An opportunity to work with the Heart of Wales Line Trail group to develop train walks has recently been taken up. We would happily consider other similar opportunities but have not been pro-active in identifying schemes.

<p align="center">2007 – 2017 RIGHTS OF WAY IMPROVEMENT PLAN PROGRESS REVIEW</p> <p align="center">AIM 4: WORK IN PARTNERSHIP TO ACHIEVE IMPROVED FACILITIES FOR COUNTRYSIDE ACCESS</p> <p align="center">B. VOLUNTEERS</p>	
<p>ACTION 42:</p> <p>Continue to maximise the potential for organised voluntary groups – local, national and international in the provision and improvement and maintenance of countryside access programmes.</p>	<p>In conjunction with Ranger service:</p> <p>2007-2012 regular use of UNA international volunteers to maintain and improve PRoW network.</p> <p>2007-2014 use of Ramblers volunteer groups for maintenance work.</p>
<p>ACTION 43:</p> <p>Continue to provide a minimum of 15 work camps/30 weeks p.a. for local and other organised voluntary groups.</p>	<p>Voluntary work camps ended in 2012</p>
<p align="center">2007 – 2017 RIGHTS OF WAY IMPROVEMENT PLAN PROGRESS REVIEW</p> <p align="center">AIM 5: PROMOTION – MAINTAIN AND IMPROVE THE RANGE AND QUALITY OF PUBLIC INFORMATION, WIDELY AVAILABLE IN APPROPRIATE FORMS</p> <p align="center">A. GENERAL</p>	
<p>ACTION 44:</p> <p>Continue to work with other agencies to improve opportunities for countryside access from people living in Communities First areas.</p>	<p>Not been an active priority</p>
<p>POLICY 20:</p> <p>Continue to promote and encourage responsible use of the countryside and respect for those that live and work in the countryside.</p>	<p>Involved in the development of the Public Space Protection Order and associated public information to encourage responsible use of public spaces including PRoWs. Ongoing distribution of material for the promotion of responsible behaviour in the countryside issued by other organisations such as NRW and the Welsh Government</p>
<p>POLICY 21:</p> <p>Continue to encourage participation in countryside access from all sections of society.</p>	<p>No active promotion presently. Recent Digital Transformation Workshop highlighted opportunities for increased public relations to encourage participation.</p>
<p align="center">2007 – 2017 RIGHTS OF WAY IMPROVEMENT PLAN PROGRESS REVIEW</p> <p align="center">AIM 5: PROMOTION – MAINTAIN AND IMPROVE THE RANGE AND QUALITY OF PUBLIC INFORMATION, WIDELY AVAILABLE IN APPROPRIATE FORMS</p> <p align="center">B. PUBLICITY MATERIAL</p>	
<p>ACTION 45:</p> <p>Retain, revise and update the ‘great outdoors’ brochure as the main printed source of information on countryside recreation access opportunities for walkers, cyclists, horse riders, disabled and vehicular users.</p>	<p>Not been updated. Publication no longer distributed.</p>

<p>ACTION 46:</p> <p>Provide promotional material for promoted rights of way.</p>	<p>Promotion ongoing. Approximately 20% of CCC Walks leaflets are being updated each year primarily as downloadable leaflets on CCC website. (Hard copy leaflets still available at present but may be discontinued dependent upon future demand).</p>
<p>ACTION 47:</p> <p>Produce Strategic Walks leaflets to promote the (upgraded) Coast, Teili and Tywi and other defined trails.</p>	<p>Carmarthenshire's section of the Wales Coast Path will be added and updated to the CCC website as and when appropriate.</p> <p>The Tywi & Teifi were promoted up until 2015 but no active promotion has been carried out since then and there are no plans to specifically promote the Tywi or Teifi Trails or to reprint the brochures. This is subject to change dependant on resource.</p>
<p>ACTION 48:</p> <p>Ensure that the current series of country walks (36) is kept up to date by ongoing review/reprints.</p>	<p>The 36 County Walks and Trails have recently been rationalised down to 22 due to some being identified as inappropriate as CCC promoted walks for reasons of poor quality, accessibility and/or popularity. Additionally some have been removed from the series as they have been superseded by new schemes or are promoted and managed by outside organisations such as the National Trust removing the need for CCC promotion.</p>
<p>ACTION 49:</p> <p>Produce updated/additional country walks leaflets to complement the existing series.</p>	<p>WCP superseded CCC Coastal Trail. Now a major promoted route in the County, no other routes added.</p>
<p>ACTION 50:</p> <p>Further improve the County Council website by providing information on countryside access opportunities and for all users, including:</p> <ul style="list-style-type: none"> a. Def. map & statement b. Application packs for claims, diversions, etc. c. An interactive map & complaints form. d. Registers of def map applications and statutory declarations. e. Claims & modification orders. f. Local access forum details. 	<p>Website has been improved with the introduction of i-local giving the public a way of viewing PRoW data online. LAF information (minutes of meetings, meeting dates) are published online.</p>
<p>ACTION 51:</p> <p>Produce new information on opportunities for horse riding in the County.</p>	<p>Nothing produced by CCC but work closely with BHS and Carms Riders who publish promotional material and info.</p>

2007 – 2017 RIGHTS OF WAY IMPROVEMENT PLAN PROGRESS REVIEW

AIM 5: PROMOTION – MAINTAIN AND IMPROVE THE RANGE AND QUALITY OF PUBLIC INFORMATION, WIDELY AVAILABLE IN APPROPRIATE FORMS

C. PROMOTING ACCESS FOR ALL

ACTION 52: Provide 'Access for All' information on access opportunities for those with limited mobility and other impairments.	No
ACTION 53: Promote the social and health benefits of walking, riding, and cycling through events and programmes such as the 'Lets walk Cymru' Scheme, Urban Walks and activity programmes from countryside parks & other locations.	Intermittent promotion of health benefits through 'Walking your Way to Health Officer' (until 2008) Countryside Rangers Service and Volunteers.

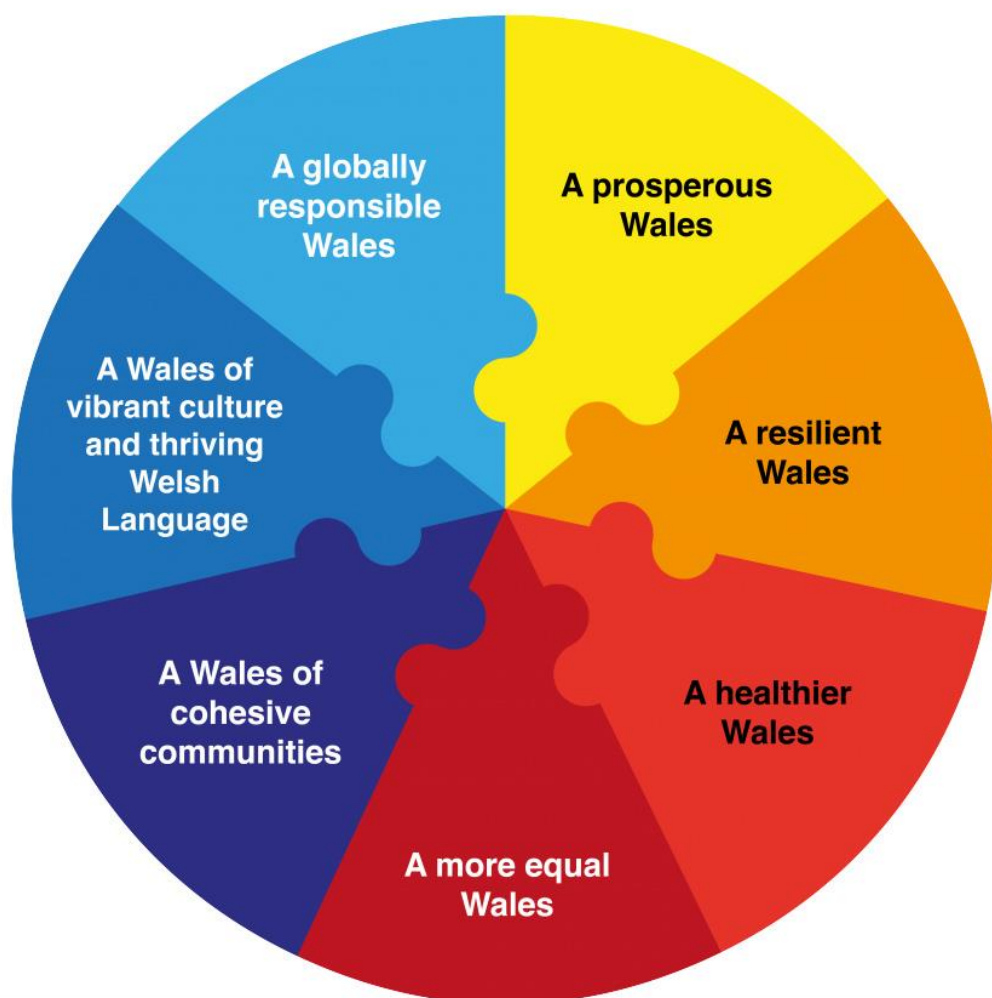
Appendix 8

CURRENT AND EMERGING LEGISLATION, PLANS AND POLICIES

a) Well-being of Future Generations (Wales) Act 2015

The Well-Being of Future Generations (Wales) Act 2015 (WFG Act) puts in place a stronger, more coherent sustainable development framework for Wales through a set of seven well-being goals, a sustainable development principle, and a strong duty for all public bodies to carry out sustainable development, reflecting the need to improve the economic, social, environmental and cultural well-being of Wales.

This Rights of Way Improvement Plan compliments the key objectives of the Well-Being of Future Generations Act illustrated below.



WELL-BEING GOAL	CARMARTHENSHIRE ROWIP
<i>A prosperous Wales</i>	<p>Natural resources provide opportunities for employment and economic activity. For example, wildlife and outdoor activity tourism to Wales provides around 206,000 jobs and is estimated to be worth £6.2 billion.</p> <p>The PROW network provide unrivalled access to Carmarthenshire's varied natural and historically rich countryside.</p> <p>Tourism is a key component of Carmarthenshire's economy and a major source of employment and revenue supporting over 5,547 full time equivalent jobs either directly or indirectly and generating £326m revenue to the County's economy annually.</p> <p>provide</p>
<i>A resilient Wales</i>	<p>The countryside and the PROW Network all contribute to supporting Wales' ability to adapt to climate change by providing opportunities for sustainable travel via the Footpath, Bridleway and Byways network across the County.</p>
<i>A healthier Wales</i>	<p>Natural resources make a significant contribution to the physical health and mental well-being of people in Wales.</p> <p>Open space has the potential to provide benefits to health and wellbeing and can assist in mitigating the causes and effects of inactivity.</p> <p>Open spaces can also provide arenas for social interaction and community activities, and have a key role to play in underpinning other key strategic documents, such as the Health, Social Care and Well Being strategy.</p> <p>The PROW network enables the public at large to take advantage of the health benefits offered by the natural environment.</p>

<p><i>A more equal Wales</i></p>	<p>We want to minimise negative and maximise positive impacts for everyone. At present, sections of the Rights of Way Networks are not accessible to everyone and the very nature of certain routes may restrict those with mobility problems from accessing the entire network. However, we endeavour to provide access to all where possible, enabling all members of society to enjoy the access opportunities the network provides.</p>
<p><i>A Wales of cohesive communities</i></p>	<p>This Improvement Plan will involve communities, Local Access Forums, other organisations and volunteers in the management of the Rights of Way Network, as this joint working has been shown to improve community cohesion and reduce anti-social behaviour.</p>
<p><i>A Wales of vibrant culture and thriving Welsh Language</i></p>	<p>Landscapes have played a significant role in the development of distinct cultural practices, such as local building techniques relying on local materials, along with locally specific art and literature. This Improvement Plan will act to protect all cultural aspects of the Rights of Way Network.</p>
<p><i>A globally responsible Wales</i></p>	<p>The environment supplies all our material resources, this Improvement Plan will ensure that in maintaining and improving the PROW network, we use only our fair share.</p>

By correctly managing our PROW network we can contribute to a nation which maintains and enhances a biodiverse natural environment with healthy functioning ecosystems that support social, economic and ecological resilience and the capacity to adapt to change as required by the 2015 Act

b) The Active Travel (Wales) Act 2013

The Active Travel (Wales) Act 2013 [“the 2013 Act”] places a duty on Local Authorities to secure new Active Travel routes and related facilities, to secure improvements to existing routes and facilities and to promote active travel journeys.

Section 9 of the 2013 Act requires local authorities to take reasonable steps, as far as it is practical, to enhance the provision for walkers and cyclists in the exercise of specified functions including those relating to creation, improvement, maintenance and enforcement of highways (including public Rights of Way) under parts 3, 4, 5, 9, and 12 of the Highways Act 1980.

Carmarthenshire has an extensive Active Travel Network, and this plan pays due regard to the Active Travel Act. The following medium priority actions are contained with Aim 3 of the Action Plan under the sub-heading Active Travel, demonstrate our commitment to developing Active Travel routes as part of the Rights of Way Network;

AIM 3:

ENSURE THAT OPPORTUNITIES FOR OTHER COUNTRYSIDE ACCESS ARE EASY TO USE AND ENJOYABLE

ACTIVE TRAVEL

ACTION 25:

Assist the Transport Strategy & Infrastructure team in developing and maintaining cycleways in accordance with Carmarthenshire Cycle Strategy and the Active Travel Act.

ACTION 26:

Provide regular advice the Transport Strategy and Infrastructure team in schemes being developed under Active Travel and/or the Walking and Cycling Strategy.

c) The Equality Act 2010

The Equality Act 2010 [“the Equality Act”] draws together a range of discrimination legislation and largely replaced the Disability Discrimination Act 1995. The Equality Act specifies a number of ‘*protected characteristics*’: age, disability, gender reassignment, marriage and civil partnership, pregnancy and maternity, race, religion or belief, sex, and sexual orientation.

The Equality Act makes it unlawful to directly or indirectly discriminate against someone on the grounds of those characteristics.

Section 149, outlined below, also introduces a ‘public sector equality duty’ requiring that, in the exercise of its functions, authorities to have due regard to the need to;

d) The Equality Act, Section 149;

- (1) A public authority must, in the exercise of its functions, have due regard to the need to—
 - (a) Eliminate discrimination, harassment, victimisation and any other conduct that is prohibited by or under this Act;
 - (b) Advance equality of opportunity between persons who share a relevant protected characteristic and persons who do not share it;
 - (c) Foster good relations between persons who share a relevant protected characteristic and persons who do not share it.
- (2) A person who is not a public authority but who exercises public functions must, in the exercise of those functions, have due regard to the matters mentioned in subsection (1).
- (3) Having due regard to the need to advance equality of opportunity between persons who share a relevant protected characteristic and persons who do not share it involves having due regard, in particular, to the need to:
 - (a) Remove or minimise disadvantages suffered by persons who share a relevant protected characteristic that are connected to that characteristic;

- (b) Take steps to meet the needs of persons who share a relevant protected characteristic that are different from the needs of persons who do not share it;
 - (c) Encourage persons who share a relevant protected characteristic to participate in public life or in any other activity in which participation by such persons is disproportionately low.
- (4) The steps involved in meeting the needs of disabled persons that are different from the needs of persons who are not disabled include, in particular, steps to take account of disabled persons' disabilities.
- (5) Having due regard to the need to foster good relations between persons who share a relevant protected characteristic and persons who do not share it involves having due regard, in particular, to the need to
 - (a) Tackle prejudice, and
 - (b) Promote understanding.
- (6) Compliance with the duties in this section may involve treating some persons more favourably than others; but that is not to be taken as permitting conduct that would otherwise be prohibited by or under this Act.
- (7) The relevant protected characteristics are
 - Age;
 - Disability;
 - Gender reassignment;
 - Pregnancy and maternity;
 - Race;
 - Religion or belief;
 - Sex;
 - Sexual orientation.

This Rights of Way Improvement Plan pays due regard to the requirements of the Act, as demonstrated by the following two actions contained within Aim 1 of the Action Plan under the sub-heading Access for All;

AIM 1:
ENSURE THAT THE RIGHTS OF WAY NETWORK IS EASY TO USE AND
ENJOYABLE
ACCESS FOR ALL

ACTION 14:

Adopt the policy of Least Restrictive Access and follow the principles of "By All Reasonable Means" using appropriate advice and guidance to improve the accessibility of all countryside access schemes.

ACTION 15:

Engage with established advisory groups such as the Carmarthenshire Disability Coalition and relevant organisations on opportunities to upgrade the network for people with disabilities and other less able users. Also, take active steps to identify and appoint a LAF member to represent the interests and needs of disabled and less abled users.

e) Local Government Act 1999

Section 3 of The Local Government Act 1999 requires local authorities to make arrangements to secure continuous improvement in the way in which their functions are exercised, having regard to a combination of economy, efficiency and effectiveness.

In doing so, authorities must consult, among others, representatives of persons who use or are likely to use services provided by the authority.

Section 3 of the Act states;

- (1) A best value authority must make arrangements to secure continuous improvement in the way in which its functions are exercised, having regard to a combination of economy, efficiency and effectiveness.
- (2) For the purpose of deciding how to fulfil the duty arising under subsection (1) an authority must consult—
 - (a) Representatives of persons liable to pay any tax, precept or levy to or in respect of the authority,
 - (b) Representatives of persons liable to pay non-domestic rates in respect of any area within which the authority carries out functions,
 - (c) Representatives of persons who use or are likely to use services provided by the authority, and
 - (d) Representatives of persons appearing to the authority to have an interest in any area within which the authority carries out functions.

This Rights of Way Improvement Plan pays due regard to the requirements of the Local Government Act 1999, as outlined in Section 8 and 10 and appendix 4.

Significant consultation was undertaken and all sections of the community in Carmarthenshire were given the opportunity to provide feedback and opinion on the management and continuous improvement of the Rights of Way network.

f) The Environment (Wales) Act 2016

The Environment (Wales) Act became law on 21st March 2016. It puts in place legislation to enable Wales' resources to be managed in a more proactive, sustainable and joined up manner and to establish the legislative framework necessary to tackle climate change. The Act supports the Welsh Government's wider remit under the Well-being of Future Generations (Wales) Act 2015 (see above), so that Wales benefits from a prosperous economy, a healthy and resilient environment and vibrant, cohesive communities.

The Act placed a duty on Natural Resources Wales (NRW) to produce Area Statements to enable Wales' natural resources to be managed in a sustainable and coordinated way. Carmarthenshire sits within the South West Wales Area Statement catchment which also incorporates Pembrokeshire, Swansea and Neath Port Talbot.



Area Statement areas and Unitary Authority Boundaries
(Taken from Natural Resources Wales Website)

The profile of the South West area includes extensive areas of coast, estuary farmland, upland and mountains as well as industrial areas such as the steelworks at Port Talbot. Carmarthenshire contains all of these varied environments to some degree and therefore must take account of all of the unique and special resources available to us and going forward, work with all partners within the South West area to tackle the challenges and realise any opportunities those resources can offer.

The Area Statements are still being developed therefore it is not possible for this ROWIP to take account of the proposed Place Based approach for Natural Resource Management that the Statements will ultimately direct. The Authority will however get involved in the process and work together with NRW and other partners in developing the South West Area Statement so that any priorities, principles and actions coming out of the process align with the needs of the area and the Natural Resources available.

In addition to Area Statements, within the Act the Biodiversity and Resilience of Ecosystems Duty (Section 6 of the Act) requires that all public authorities 'must seek to maintain and enhance biodiversity in the exercise of functions in relation to Wales, and in so doing promote the resilience of ecosystems, so far as consistent with the proper exercise of those functions'.

The intention is to ensure that in carrying out their functions, public authorities will:

- Place biodiversity as a natural and integral part of policy and decision making within public bodies, embedding it in its plans, policies and projects and day-to-day activities.
- Address biodiversity decline, through positive actions that will result in maintenance or enhancement of our biodiversity.
- Develop ecosystem resilience through maintaining and enhancing biodiversity.

This Rights of Way Improvement Plan is therefore a key mechanism where we can evidence compliance with this duty through the way we manage and enhance and promote our ROW network.

The Council has produced an Environment Act Forward Plan setting out how it intends to comply with the duty with an action to consider the Environment Act duty when preparing the ROWIP.

g) Carmarthenshire Environment Act Forward Plan 2017 – 2019

As required by the Environment (Wales) Act, the Authority has developed a forward plan detailing how they intend to comply with the duty to enhance biodiversity and promote the resilience of ecosystems.

The forward plan highlights the pending ROWIP review and that the review process will 'address new duties placed on LAs under this Act' (Carmarthenshire County Council Forward Plan for Environment (Wales) Act 2016, 2017-19)

The ROWIP contains actions where the requirements of the Environment Act can be implemented effectively by working closely with the Rural Conservation Section. This will ensure the best results in maintaining and promoting the PROW network whilst meeting the LAs duties under the 2015 Act.

h) Carmarthenshire Well-Being Plan

The Well-being of Future Generations (Wales) Act 2015 places a duty on each Public Services Board (PSB) to develop and publish a county Well-being Plan by May 2018.

As part of the preparation of this Plan, Carmarthenshire PSB undertook a detailed Well-being Assessment of the social, economic, environmental and cultural well-being of the county and the assessment, along with a series of engagement events used to identify the Carmarthenshire well-being objectives and the actions to make progress against those objectives.

The key objectives of the Carmarthenshire plan (The Carmarthenshire We Want 2018-2023) are:

Healthy Habits: People have a good quality of life, and make healthy choices about their lives and environment.

Early Intervention: To make sure that people have the right help at the right time; as and when they need it.

Strong Connections: Strongly connected people, places and organisations that are able to adapt to change.

Prosperous Places: To maximise opportunities for people and places in both urban and rural parts of our county.

ROWIP aims 1, 3 and 5 will all contribute towards some of these objectives by providing the opportunities people need to develop Healthy Habits, make Strong Connections and allow Places to Prosper.

i) Local Development Plan

The Carmarthenshire Local Development Plan (LDP) was adopted in December 2014.

The LDP sets out the spatial vision for the future of Carmarthenshire (excluding that area within the Brecon Beacons National Park) and a framework for the distribution and delivery of growth and development.

It sets out land-use planning policies and proposals which are used in the determination of planning applications and in guiding future opportunities for investment and growth.

These policies include land-use allocations for different types of development (i.e. housing, employment, retailing, education, open space etc.) as well as criteria for assessing individual proposals.

The Plan has a direct effect on the lives of every resident of the County as well as major implications on investment programmes, other plans and strategies, communities and landowners alike.

The LDP contains a number of policies that support and compliment this Rights of Way Strategy including;

SP14 Protection and Enhancement of the Natural Environment

Development should reflect the need to protect, and wherever possible enhance the County's natural environment.

All development proposals should be considered in accordance with national guidance/legislation and the policies and proposals of this Plan, with due consideration given to areas of nature conservation value, the countryside, landscapes and coastal areas, including those outlined below:

- a. Statutory designated sites including Ramsar sites, SPAs, SACs, SSSIs and National Nature Reserves;
- b. Biodiversity and Nature Conservation Value, including protected species and habitats of acknowledged importance as well as key connectivity corridors and pathways;
- c. Regional and Locally important sites (and their features) including Local Nature Reserves and RIGS;
- d. Areas of identified Landscape and Seascape quality (including SLAs);
- e. Features which contribute to local distinctiveness, nature conservation value or the landscape;
- f. The Open Countryside;
- g. The best and most versatile agricultural land (Grade 2 and 3a);
- h. Natural assets: including air, soil (including high carbon soils) controlled waters and water resources.

SP15 Tourism and the Visitor Economy

Proposals for tourism related developments and for appropriate extensions to existing facilities will be supported where they are in accordance with the locational hierarchy set out below and are acceptable in terms of scale, type of development, siting and general impact:

- i. Within the development limits of Growth Areas and Service Centres - major tourism proposals, including high level traffic generators;
- ii. Within the development limits of Local Service Centres and Sustainable Communities – smaller scale proposals which reflect the character of the area which are appropriate in terms of size, scale and impact;
- iii. Open Countryside – small scale location specific developments that must satisfy policy TSM3, except where they are subject to the provisions of TSM2 and/or TSM5.

SP16 Community Facilities

The LDP will support the provision of new facilities, along with the protection and enhancement of existing facilities, in accordance with the settlement framework and based upon evidence of need. Proposals for new education and training related developments will be supported where it supports the settlement framework and accords with the policies of this Plan.

SP17 Infrastructure

Development will be directed to locations where adequate and appropriate infrastructure is available or can be readily provided. The LDP therefore supports the economic provision of infrastructure by allocating sites in identified settlements and in accordance with the Settlement Framework.

Renewable energy generation and associated utility connections will be encouraged, in appropriate locations, subject to other Plan policies.

Proposals for ancillary developments to the utilities infrastructure will be permitted where:

- a. They have regard to their setting;
- b. Incorporate landscaping;
- c. Do not conflict with the areas built, historic, cultural and nature conservation and landscape qualities.

LDP Review

A review of the Carmarthenshire LDP commenced in 2018 and will provide opportunities for PRoW interests to be considered and for reference to be made to the ROWIP within the revised plan.